

BALTIMORE COUNTY PUBLIC SCHOOLS

DATE: January 13, 2004

TO: BOARD OF EDUCATION

FROM: Dr. J. Hairston, Superintendent

SUBJECT: Inclement Weather Procedures

ORIGINATOR: J. Robert Haines, Deputy Superintendent

RESOURCE

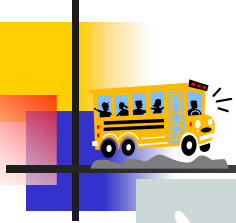
PERSON(S): Rita Fromm, Executive Director, Planning and Support Operations

RECOMMENDATION

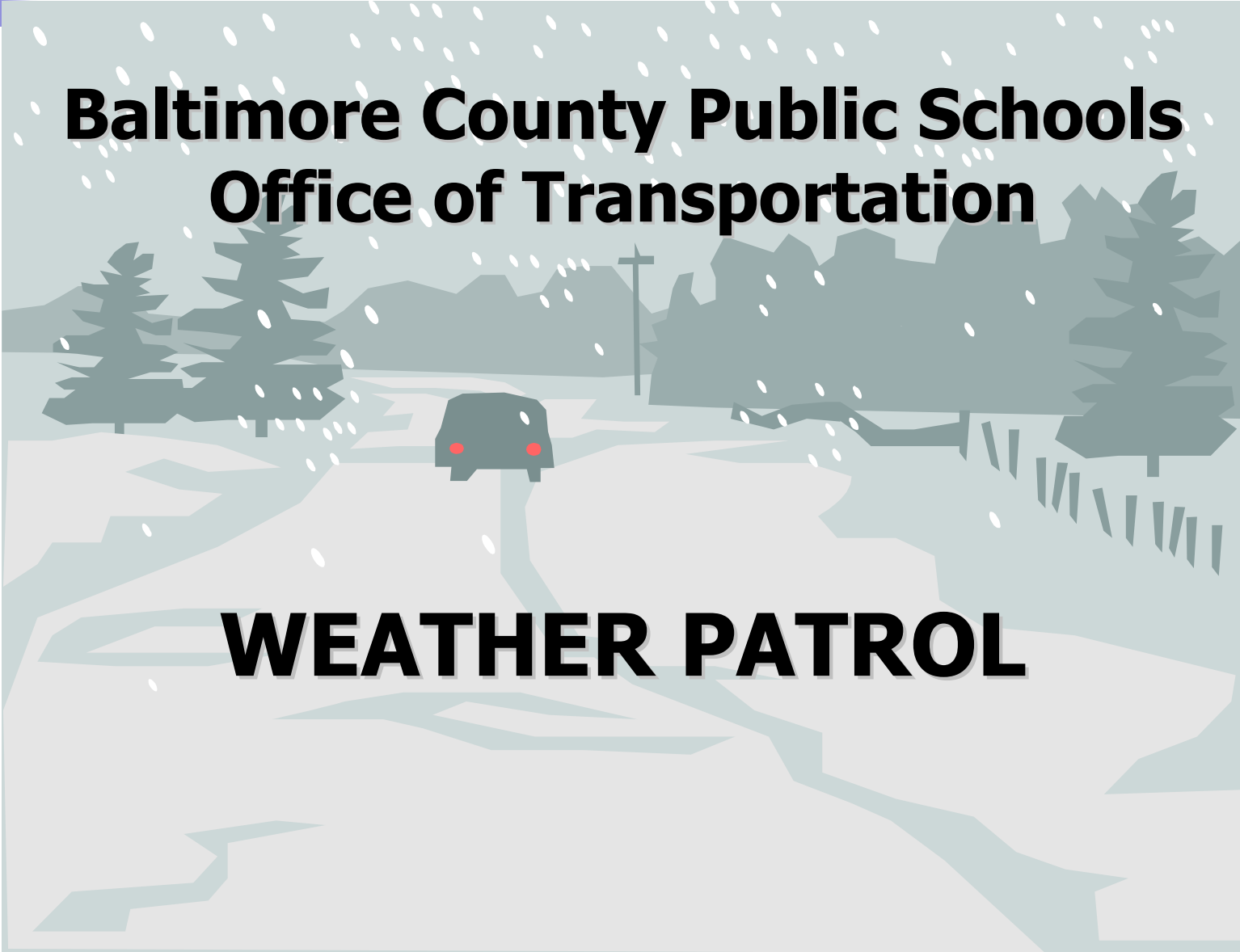
That the Board of Education receives information regarding procedures in place to assess the impact of inclement weather on school openings.

Background Information: The Office of Transportation has procedures in place to provide an assessment on which the Superintendent makes the decision to modify school schedules on inclement weather days.

JRH/cs



Baltimore County Public Schools Office of Transportation



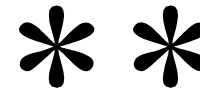
WEATHER PATROL

"We Take Pride In A Safe Ride"



Seasonal Overview

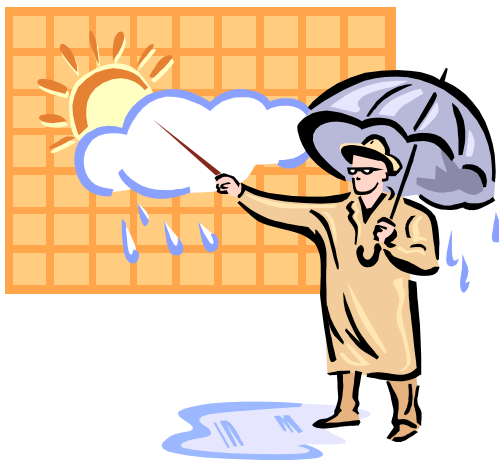
- School Calendar
- Safety Supports the Instructional Program*
- Rotating Weekly Schedule
 - November through March
 - 2:30 a.m. – 3:30 a.m.
 - Every Night
 - 5 Area Managers
 - SW – Joyce Almond (acting)
 - NW – Clint Marshall
 - CE – Charlie Kus
 - NE – Lou Sergi
 - SE – Jim Mitcherling





Seasonal Overview

- Weather Updates
 - Provided by Accu-Weather through faxes
 - Non-weather event – daily
 - Weather event - hourly





Weather Event

- Whole team on the road by 3:00 a.m.
- County-wide assessment
 - Roads
 - Sidewalks
 - School driveways, parking lots, sidewalks
 - Problematic bus stop locations or routes



"We Take Pride In A Safe Ride"



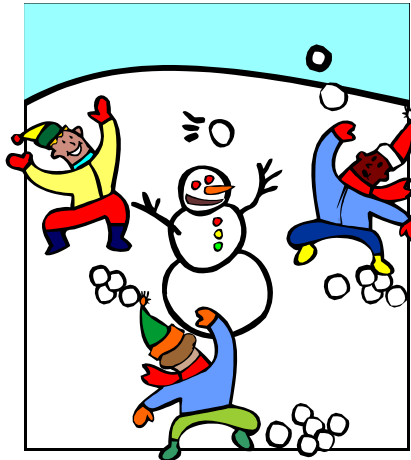
Weather Event

- Confer with Accu-weather by phone
 - Precipitation type
 - Temperature – present and forecasted
 - Projected duration of weather event
- Confer with County Roads & BCPS Grounds
 - Plowing, salting, schedules
 - Partnership with Baltimore County Roads
- Confer with adjacent LEA's
 - Confirm local weather reports
 - Track storm progress



Weather Event

- Make recommendation to Superintendent
 - Deadline 5:00 a.m.
 - Early bus schedules
 - Discuss options – delay or closure
- Media notification/Internal notification



"We Take Pride In A Safe Ride"



Adapting to Extreme Conditions

- Extreme Weather Events
 - Blizzards/Ice Storms
 - Hurricanes/Tropical Storms
 - Floods
 - Tornados



Adapting to Extreme Conditions

- Adapting to extreme conditions in localized areas



"We Take Pride In A Safe Ride"