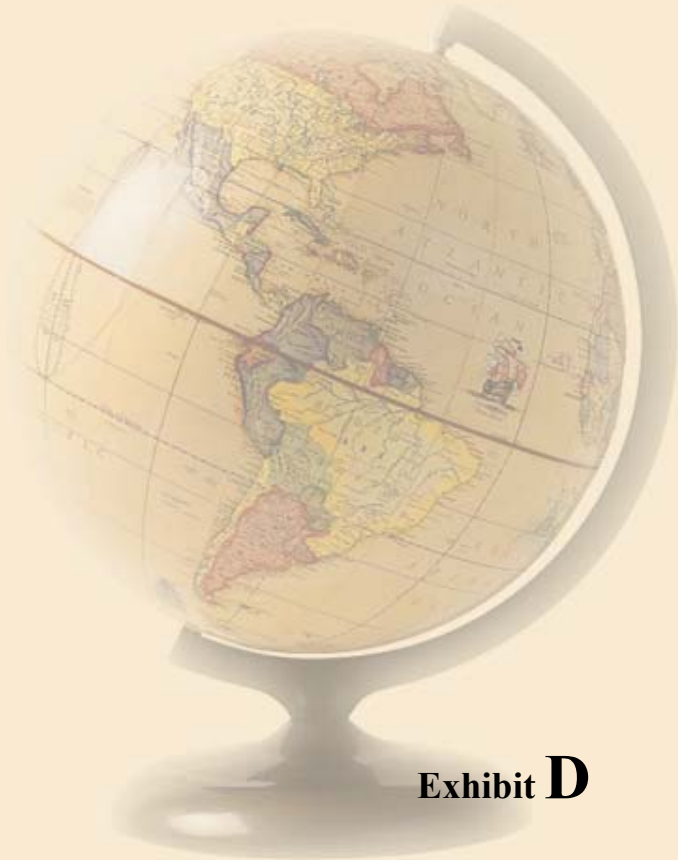


# Baltimore County Public Schools Planning Initiatives for 2004/2005



*Woodholme ES Groundbreaking, May 2004*

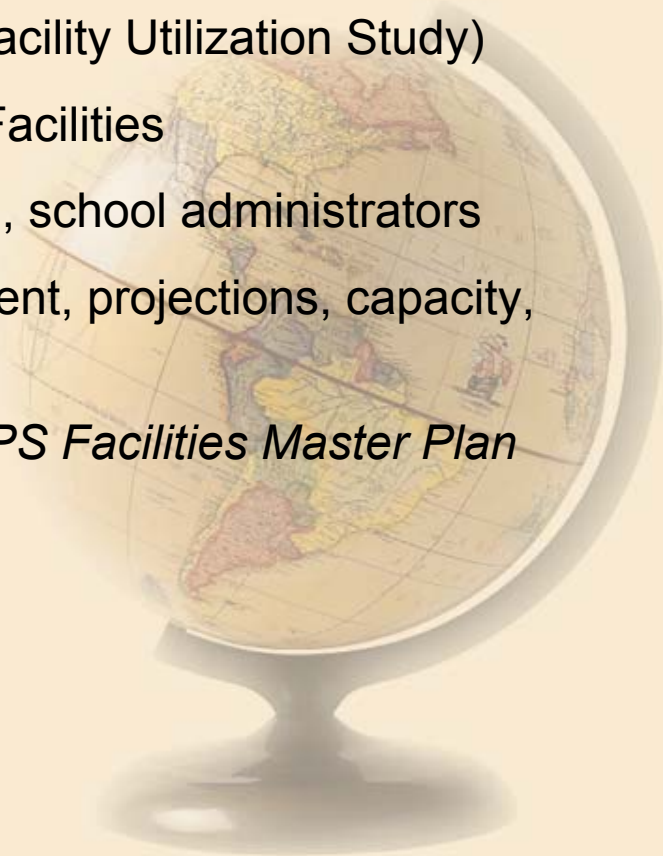
Prepared by the Baltimore County Public Schools  
Office of Strategic Planning, September 2004



**Exhibit D**

## Origins of Planning Recommendations

- Annual review and analysis of September 30 data with Executive Directors of Schools
- Annual update of enrollment projections
- Ongoing cooperation and communication with Baltimore County Planning Office, consideration of development
- Formal Studies (e.g. BCPS High School Facility Utilization Study)
- Discussions with Department of Physical Facilities
- Input from PTA's, community stakeholders, school administrators
- Consideration of impact on school enrollment, projections, capacity, facility, boundaries, demographics
- Alignment with *Blueprint for Progress, BCPS Facilities Master Plan*
- Budget priorities



# DeJong & Associates New Town Elementary School Overcrowding Study, November 2002

## Recommendations:

- Boundary change alone would not solve overcrowding
- Construction of 1-2 Elementary Schools in NW Area
- Add space to existing facilities where conditions permit

## BCPS Actions:

- Enrollment Cap established for New Town ES
- Relocated instructional programs
- Annexed neighborhoods to schools with spare capacity
- Began construction of Woodholme ES



# DeJong & Associates High School Facility Utilization Study, November 2003

## **Recommendations:**

- Districtwide boundary change would not be effective
- Construction of a new high school to relieve Central and Northeast Areas
- Relocatable classrooms, alternative space and programmatic solutions, creative scheduling options

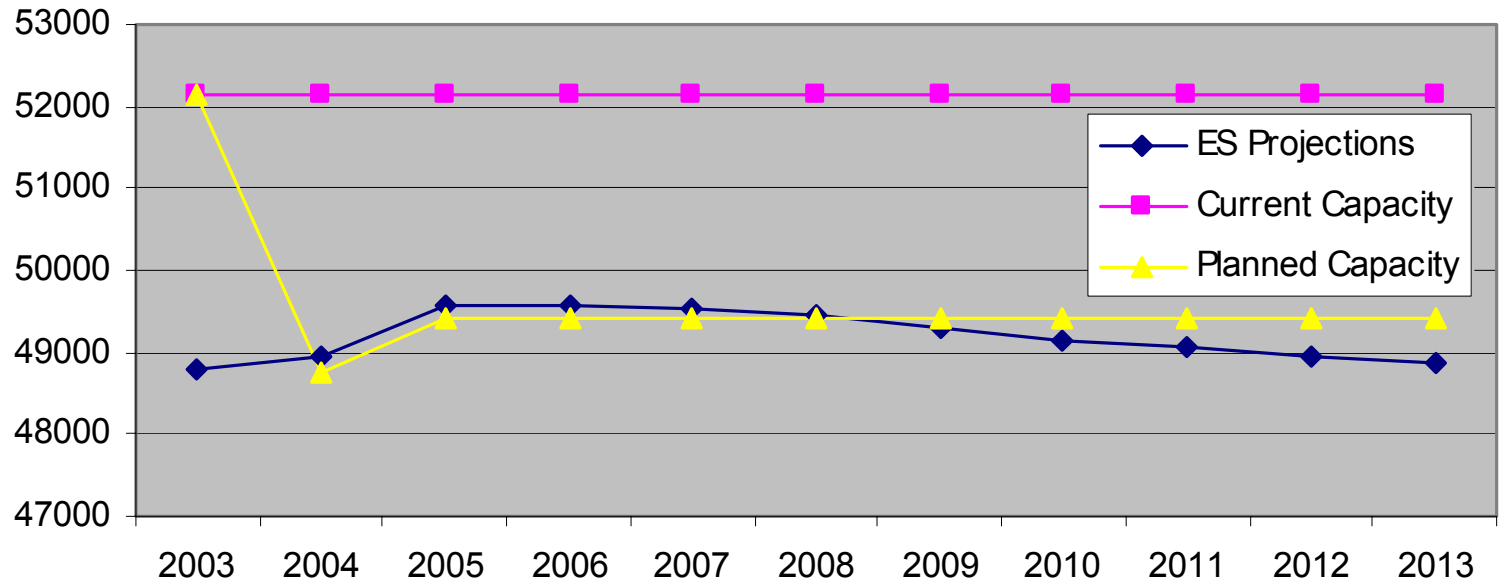
## **BCPS Actions:**

- Realigned magnet registration procedures at Milford Mill Academy to decrease overcrowding
- Relocated Office of World Languages from Milford Mill Academy to provide for more instructional space
- Began construction on additional hallway for Perry Hall HS
- Budgeted for 404-seat technology addition at Kenwood HS
- Budgeted for 75-seat (additional) renovation at Eastern Tech HS
- Realigned space at Sparrows Point High and Middle Schools



# Elementary School Issues

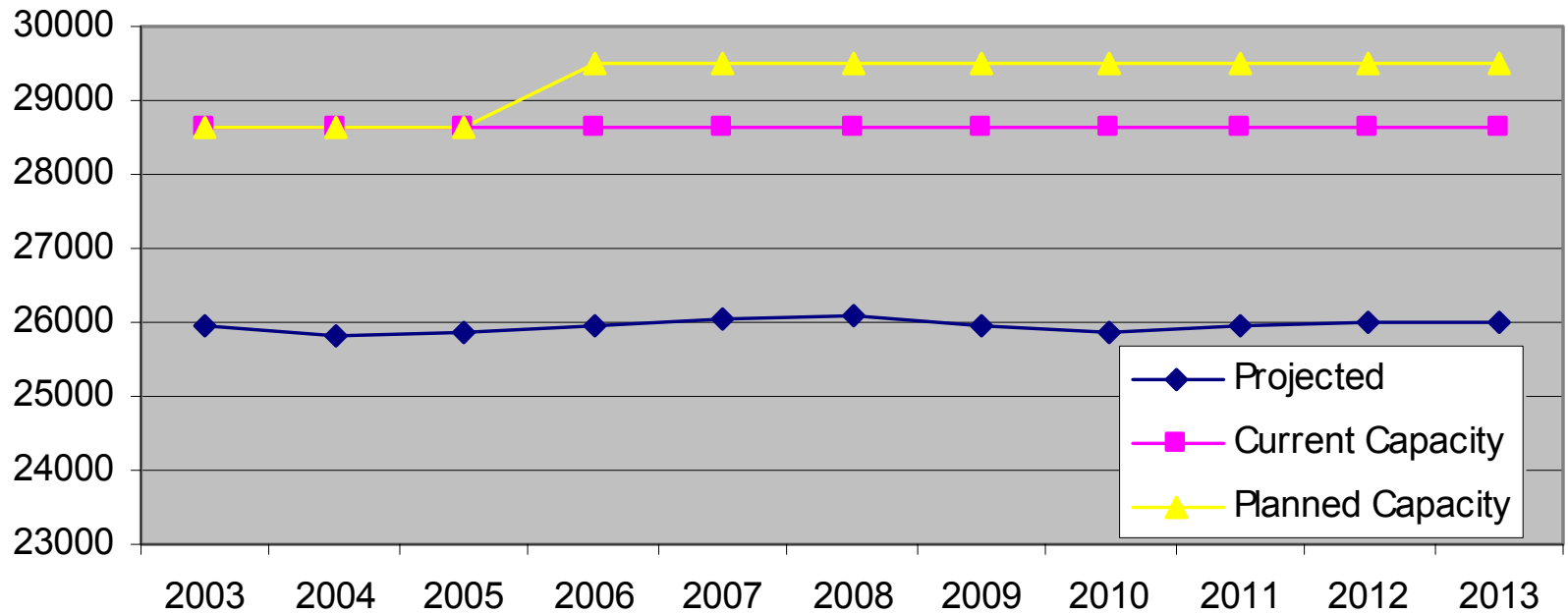
## BCPS Elementary Projections and Capacity



- HB 1230 legislation reduced State Rated Capacity in elementary schools by 3,382 seats
- Addition of 676 seats in 2005 to reflect the opening of Woodholme ES

# Middle School Issues

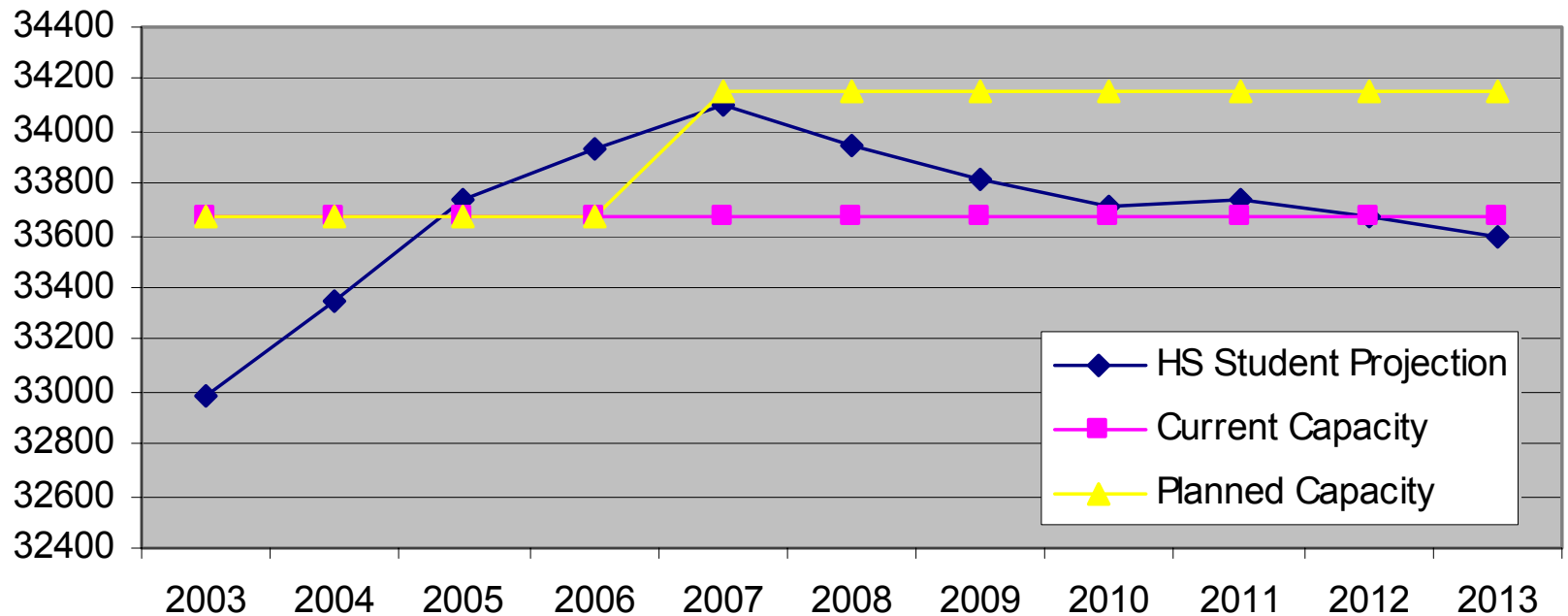
## BCPS Middle School Projections and Capacity



- Addition of 858 seats in 2006 reflected for the opening of Windsor Mill MS

# High School Issues

## BCPS High School Projections and Capacity



- Addition of 404 seats in 2007 reflected for technology addition at Kenwood HS
- Addition of 75 seats in 2007 reflected for renovation at Eastern Tech HS

## All BCPS Schools Most Over Capacity (by number of students over/under capacity)

### September 30, 2002

1. Milford Mill Academy HS (+270)
2. New Town ES (+264)
3. Kenwood HS (+248)
4. Owings Mill HS (+229)
5. Southwest Academy MS (+226)
6. Randallstown HS (+220)
7. Perry Hall HS (+171)
8. Sparrows Point HS (+137)
9. Patapsco HS (+135)
10. Towson HS (+127)

### September 30, 2003

1. Kenwood HS (+319)
2. Patapsco HS (+274)
3. Southwest Academy MS (+222)
4. Owings Mills HS (+196)
5. Towson HS (+190)
6. Perry Hall HS (+173)
7. Sparrows Point HS (+170)
8. Milford Mill HS (+158)
9. Edmondson Heights ES (+124)
10. New Town ES (+112)

Number in ( ) indicates amount over State Rated Capacity



## BCPS Elementary Schools Most Over Capacity by number of students over/under capacity

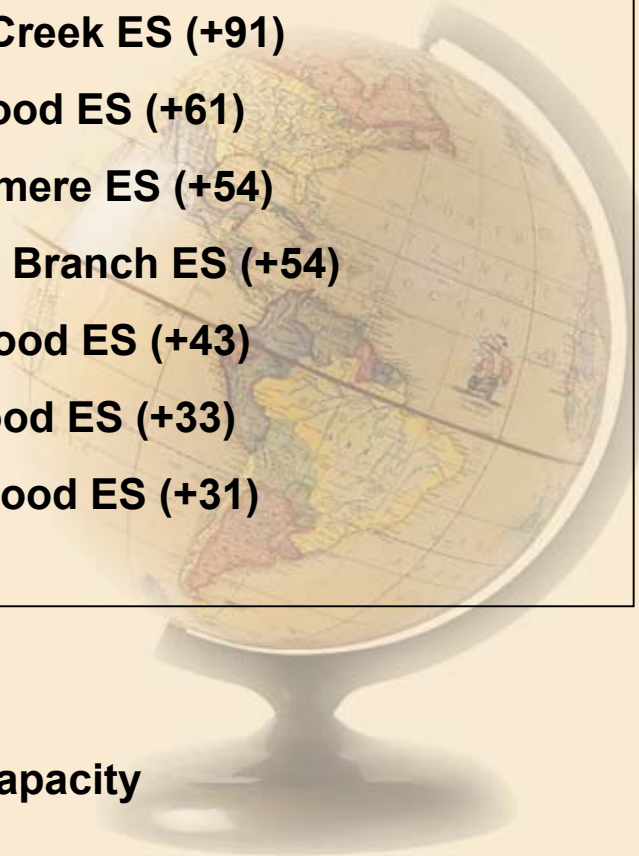
### September 30, 2002

1. New Town ES (+264)
2. Dogwood ES (+100)
3. Deep Creek ES (+80)
4. Norwood ES (+51)
5. Dundalk ES (+51)
6. Lansdowne ES (+50)
7. Cedarmere ES (+46)
8. Edmondson Heights ES (+43)
9. Chadwick ES (+42)
10. Johnnycake ES (+28)

### September 30, 2003

1. Edmondson Heights ES (+191)
2. New Town ES (+112)
3. Lansdowne ES (+93)
4. Deep Creek ES (+91)
5. Dogwood ES (+61)
6. Cedarmere ES (+54)
7. Scotts Branch ES (+54)
8. Wellwood ES (+43)
9. Norwood ES (+33)
10. Hernwood ES (+31)

Number in ( ) indicates amount over State Rated Capacity



## **BCPS Middle Schools Most Over Capacity by number of students over/under capacity**

### **September 30, 2002**

- 1. Southwest Academy MS (+226)**
- 2. Parkville MS (+95)**
- 3. Pikesville MS (+46)**
- 4. Catonsville MS (+42)**
- 5. Franklin MS (+40)**
- 6. Deer Park MS (+28)**
- 7. Golden Ring MS (0)**
- 8. Ridgely MS (-22)**
- 9. Old Court MS (-29)**
- 10. Sudbrook Magnet MS (-55)**

### **September 30, 2003**

- 1. Southwest Academy MS (+222)**
- 2. Pikesville MS (+101)**
- 3. Parkville MS (+65)**
- 4. Catonsville MS (+50)**
- 5. Franklin MS (+21)**
- 6. Deer Park MS (-32)**
- 7. Loch Raven Academy (-35)**
- 8. Golden Ring MS (-37)**
- 9. Pine Grove MS (-44)**
- 10. Ridgely MS (-49)**

**Number in () indicates amount over State Rated Capacity**

## BCPS High Schools Most Over Capacity by number of students over/under capacity

### September 30, 2002

1. Milford Mill Academy (+270)
2. Kenwood HS (+248)
3. Owings Mills HS (+228)
4. Randallstown HS (+220)
5. Perry Hall HS (+171)
6. Towson HS (+150)
7. Sparrows Point HS (+137)
8. Patapsco HS (+135)
9. Pikesville HS (+103)
10. Eastern Tech HS (+79)

### September 30, 2003

1. Kenwood HS (+319)
2. Patapsco HS (+274)
3. Owings Mills HS (+196)
4. Towson HS (+190)
5. Perry Hall HS (+173)
6. Sparrows Point HS (+170)
7. Milford Mill Academy (+158)
8. Pikesville HS (+81)
9. Hereford HS (+68)
10. Randallstown HS (+59)

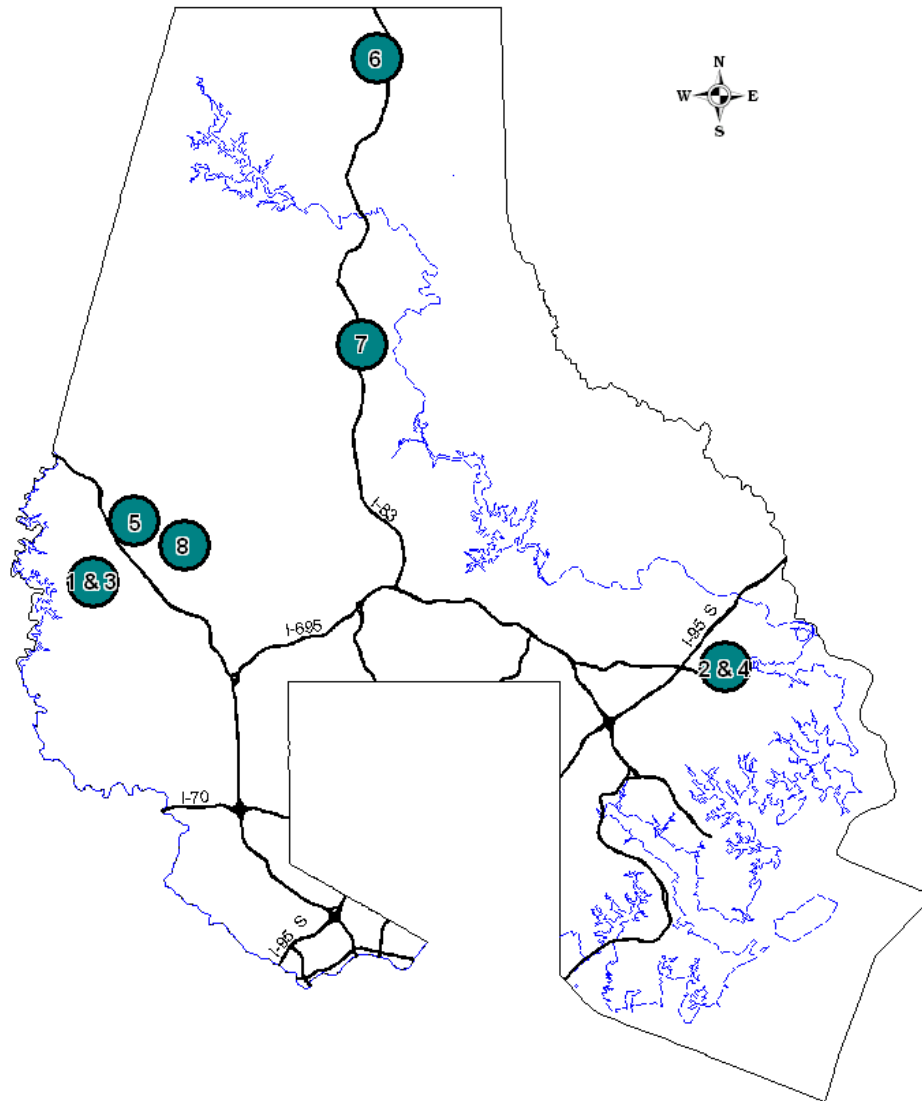
Number in ( ) indicates amount over State Rated Capacity

## BCPS Current Planning Priorities

- In accordance with Baltimore County Master Plan Indicator 8.11
  - Documentation for these projects may be found in *2004 Educational Facilities Master Plan*
1. Land Acquisition – Northwest Area Park
  2. Land Acquisition – Expansion/Exchange of Northeast Area Sites
  3. Construction of Northwest Area Elementary School
  4. Construction of Northeast Area Elementary School
  5. Addition to Reisterstown Elementary School
  6. Land Acquisition – Hereford Area
  7. Addition to Sparks Elementary School
  8. School Construction on Rosewood Site



## BCPS Current Planning Priorities for 2004/2005



1. Land Acquisition – Northwest Area Park
2. Land Acquisition – Expansion/Exchange of Northeast Area Sites
3. Construction of Northwest Area Elementary School
4. Construction of Northeast Area Elementary School
5. Addition to Reisterstown Elementary School
6. Land Acquisition – Hereford Area
7. Addition to Sparks Elementary School
8. School Construction on Rosewood Site