

BALTIMORE COUNTY PUBLIC SCHOOLS

DATE: July 11, 2006

TO: **BOARD OF EDUCATION**

FROM: Dr. Joe A. Hairston

SUBJECT: **MANAGING ENROLLMENT AND CAPACITY AT CHAPEL HILL
ELEMENTARY SCHOOL**

ORIGINATOR: J. Robert Haines, Deputy Superintendent, Business Services

**RESOURCE
PERSON(S):** Don J. Dent, Executive Director, Planning and Support Operations
William Lawrence, Northeast Area Assistant Superintendent
Ghassan Shah, Administrator, Strategic Planning

INFORMATION

The Board of Education will receive information on managing enrollment and capacity at Chapel Hill elementary School

Chapel Hill Elementary School is located in a known growth area of Baltimore County. The September 30, 2005 enrollment was 710 (643 FTE) or 50 students over the State Rated Capacity. The school is scheduled to receive Full Day Kindergarten for School Year 2006-2007.

Attachment

Managing Enrollment and Capacity at Chapel Hill ES



The Chapel Hill Music Sensations after singing the National Anthem at Ripken Stadium in July, 2005

Prepared by the Baltimore County Public Schools
Northeast Area Office and the Office of Strategic Planning
July 2006



History and Facts

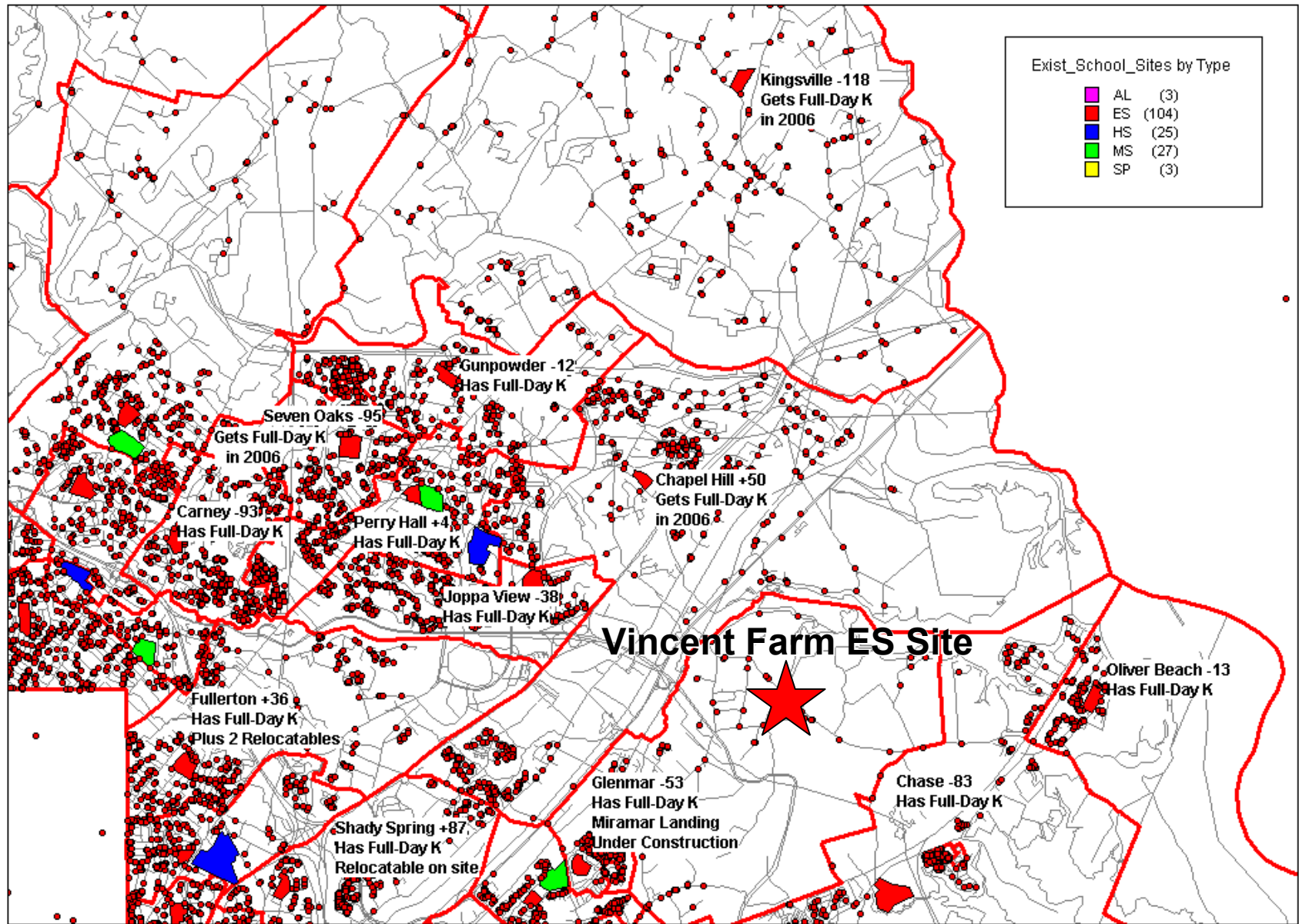
- September 30, 2005 enrollment was 710 (643 FTE)
- Capacity of 593 (50 students over State Rated Capacity)
- Receiving 2 relocatable units (4 classrooms with 92 seats) in July 06 to assist in transition to Full Day Kindergarten in Fall 06
- Few seats exist in adjacent schools to accommodate a boundary change or annexing of grades or neighborhoods
- Chapel Hill ES is in a known area of development and growth
- A new elementary school at the Vincent Farm Site is budgeted and on schedule to open in Fall 2008, which will relieve Glenmar ES and Chapel Hill ES
- **19 other BCPS elementary schools are operating at higher capacity than Chapel Hill ES**
- **26 other BCPS schools (elementary, middle, and high) are operating at higher capacity than Chapel Hill ES**



Schools in Order of Percent Capacity

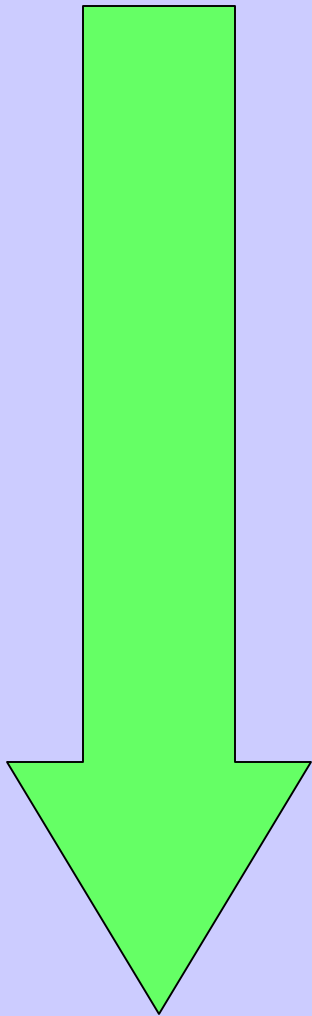
School Name	School#	Area	ENROLL TOTAL	FTE TOTAL	FULL DAY KDG	STATE CAPACITY	+/ CAP	ACTUAL % CAP	>=90% CAP	>=95% CAP	>=100% CAP	>=115% CAP
Elementary									September 30, 2005			
Deep Creek ES	1525	SE	564	537	x	358	179	150.00%	YES	YES	YES	YES
Patapsco HS	1272	SE	1653			1,302	351	126.96%	YES	YES	YES	YES
Loch Raven HS	0973	C	1217			975	242	124.82%	YES	YES	YES	YES
Dogwood ES	0112	SW	624	603	x	487	116	123.82%	YES	YES	YES	YES
Hernwood ES	0214	NW	500	490	x	398	92	123.12%	YES	YES	YES	YES
Kenwood HS	1572	NE	1854			1,527	327	121.41%	YES	YES	YES	YES
Cedarmere ES	0408	NW	500	484	x	405	79	119.51%	YES	YES	YES	YES
Rodgers Forge ES	0907	C	532	484		408	76	118.63%	YES	YES	YES	YES
Hampton ES	0911	C	366	362	x	307	55	117.92%	YES	YES	YES	YES
Lansdowne ES	1311	SW	392	368	x	313	55	117.57%	YES	YES	YES	YES
Shady Spring ES	1409	NE	607	586	x	499	87	117.43%	YES	YES	YES	YES
Norwood ES	1207	SE	618	596	x	509	87	117.09%	YES	YES	YES	YES
Hillcrest ES	0115	SW	644	629	x	542	87	116.05%	YES	YES	YES	YES
Milford Mill HS	0271	NW	1522			1,315	207	115.74%	YES	YES	YES	YES
Towson HS	0971	C	1457			1,260	197	115.63%	YES	YES	YES	YES
Reisterstown ES	0406	NW	520	502	x	438	64	114.61%	YES	YES	YES	NO
Pot Spring ES	0808	C	554	544	x	477	67	114.05%	YES	YES	YES	NO
Edmondson Heights ES	0104	SW	639	615	x	545	70	112.84%	YES	YES	YES	NO
Scotts Branch ES	0206	NW	573	573	x	511	62	112.13%	YES	YES	YES	NO
Bedford ES	0303	NW	346	346		309	37	111.97%	YES	YES	YES	NO
Hereford HS	0772	C	1377			1,230	147	111.95%	YES	YES	YES	NO
Catonsville MS	0151	SW	660			593	67	111.30%	YES	YES	YES	NO
Sparks ES	0801	C	500	466		421	45	110.69%	YES	YES	YES	NO
Wellwood ES	0304	NW	503	503	x	455	48	110.55%	YES	YES	YES	NO
Harford Hills ES	0915	NE	367	357	x	323	34	110.53%	YES	YES	YES	NO
Dundalk ES	1202	SE	691	649	x	590	59	110.00%	YES	YES	YES	NO
Chapel Hill ES	1107	NE	710	643		593	50	108.43%	YES	YES	YES	NO

Elementary Student Distribution in Chapel Hill And Surrounding Schools: 2005-2006



BCPS Relief Strategies

Low Cost



High Cost

- School Walkthroughs (Capacity Analysis)
- Room Use Recommendations and Program Changes
- Enrollment Caps (Severe)
- Community Annexing (Short Term Relief)
- Redistricting (Policy 1280)
- Relocatable Units (Short Term Relief)
- Renovations
- Permanent/Modular Additions
- Capital Construction

Considerations

- Boundary Change – Not recommended, as there is no significant adjacent capacity and the new school will require a boundary change to this area in two years
- Annexing neighborhoods – Not recommended, as there is no significant adjacent capacity to relocate neighborhoods without compromising neighborhood integrity
- Annexing Kindergarten – Not favorable to community
- Capping Enrollment – Most recent precedent at New Town ES in 2004. Capacity of 751 + 150 relocatable seats. Cap for New Town ES was established at 901, in conjunction with neighborhood annexing to schools with significant adjacent capacity. Would also be disruptive to community and potentially split siblings in households. Increased transportation costs.
- Advise parents of Special Permission Transfer Option

Action Plan

- The Office of Strategic Planning and the Northeast Area Office will implement relief strategies for Chapel Hill ES that are in line with precedent measures for managing enrollment and capacity at BCPS schools
- Short term relief will include:
 - Installation of 2 relocatable units providing 92 additional seats
 - Advising parents of Special Permission Transfer Option to such schools as Kingsville ES (-118), Joppa View ES (-34), and Seven Oaks ES (-95)
 - Consideration of capping enrollment at 685 (593 capacity + 92 relocatable seats) should the need arise
- Long term relief will include:
 - Construction of a new elementary school on the Vincent Farm Site, on schedule to open in Fall 2008 with anticipated relief for Glenmar ES and Chapel Hill ES

