

BALTIMORE COUNTY PUBLIC SCHOOLS

DATE: July 10, 2007

TO: **BOARD OF EDUCATION**

FROM: Dr. Joe A. Hairston

SUBJECT: **REPORT ON BCPS ORGANIZATION CHARTS FOR 2007-2008**

ORIGINATOR: J. Robert Haines, Deputy Superintendent

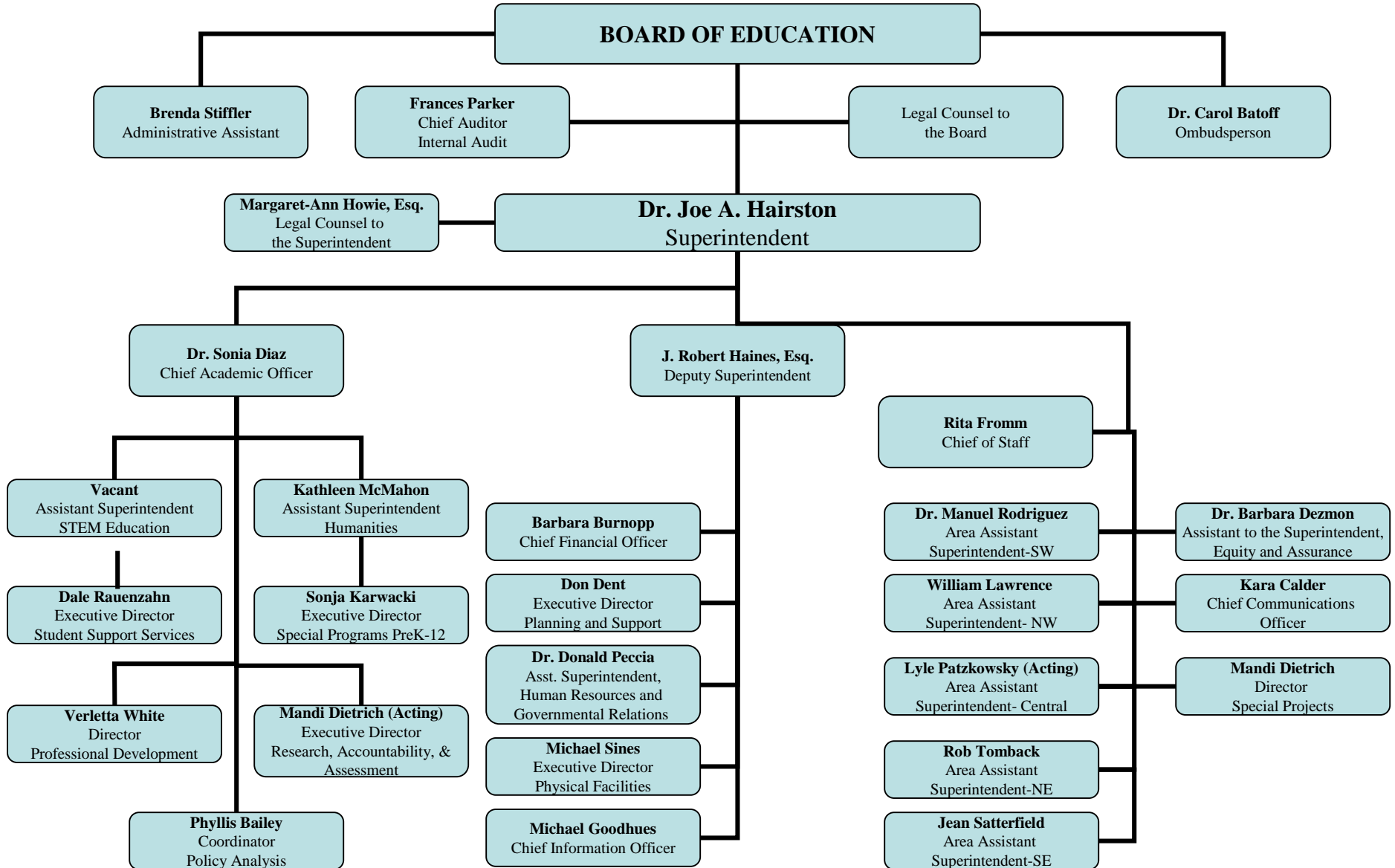
**RESOURCE
PERSON(S):** Dr. Donald Peccia, Assistant Superintendent, Human Resources &
Governmental Relations
Geoffrey Bond, Classification Specialist
Kelly Hammond, Personnel Analyst

INFORMATION

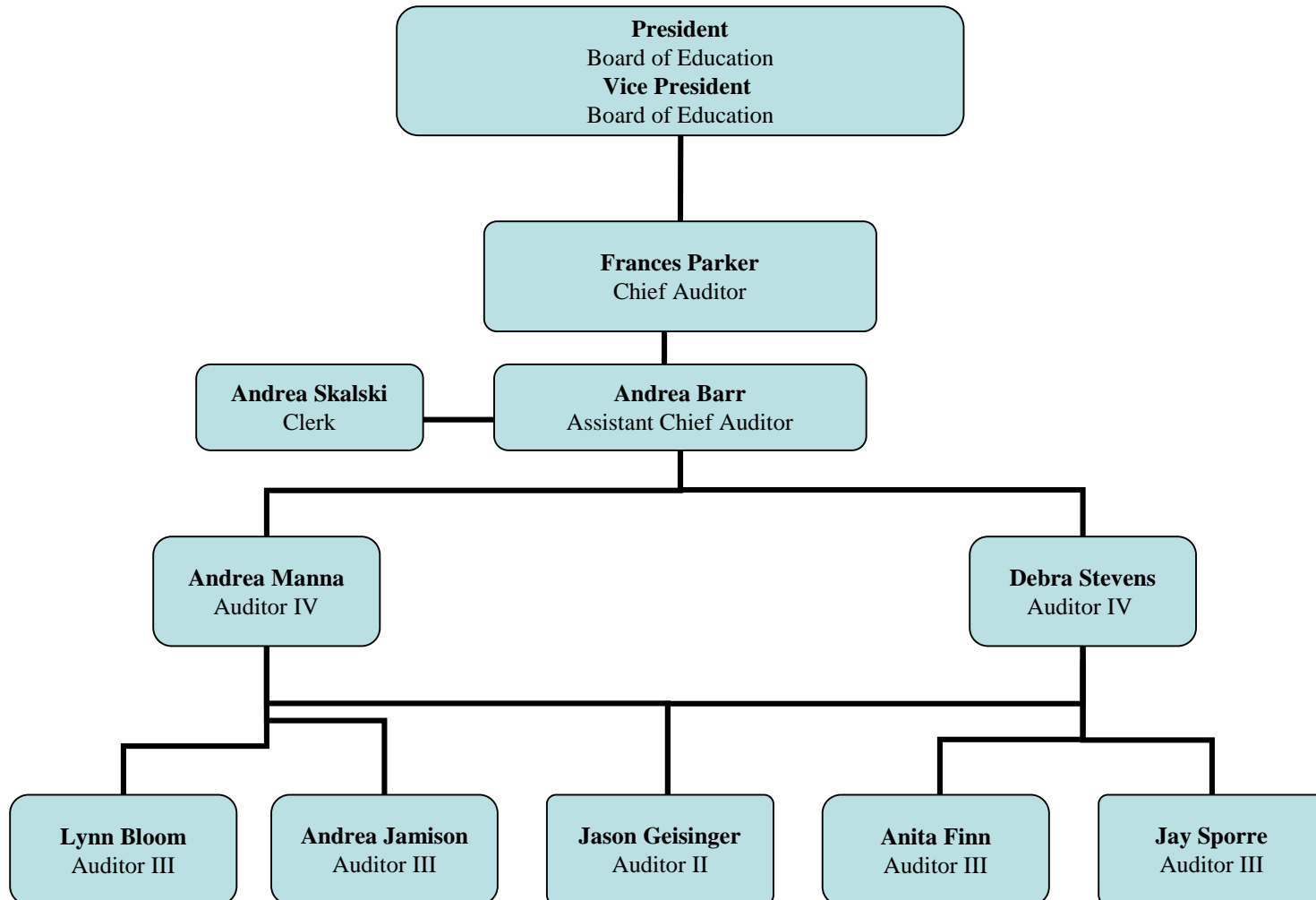
In accordance with Policy 2310, organization charts have been prepared by the Superintendent of Schools.

Attachments – Organization Charts

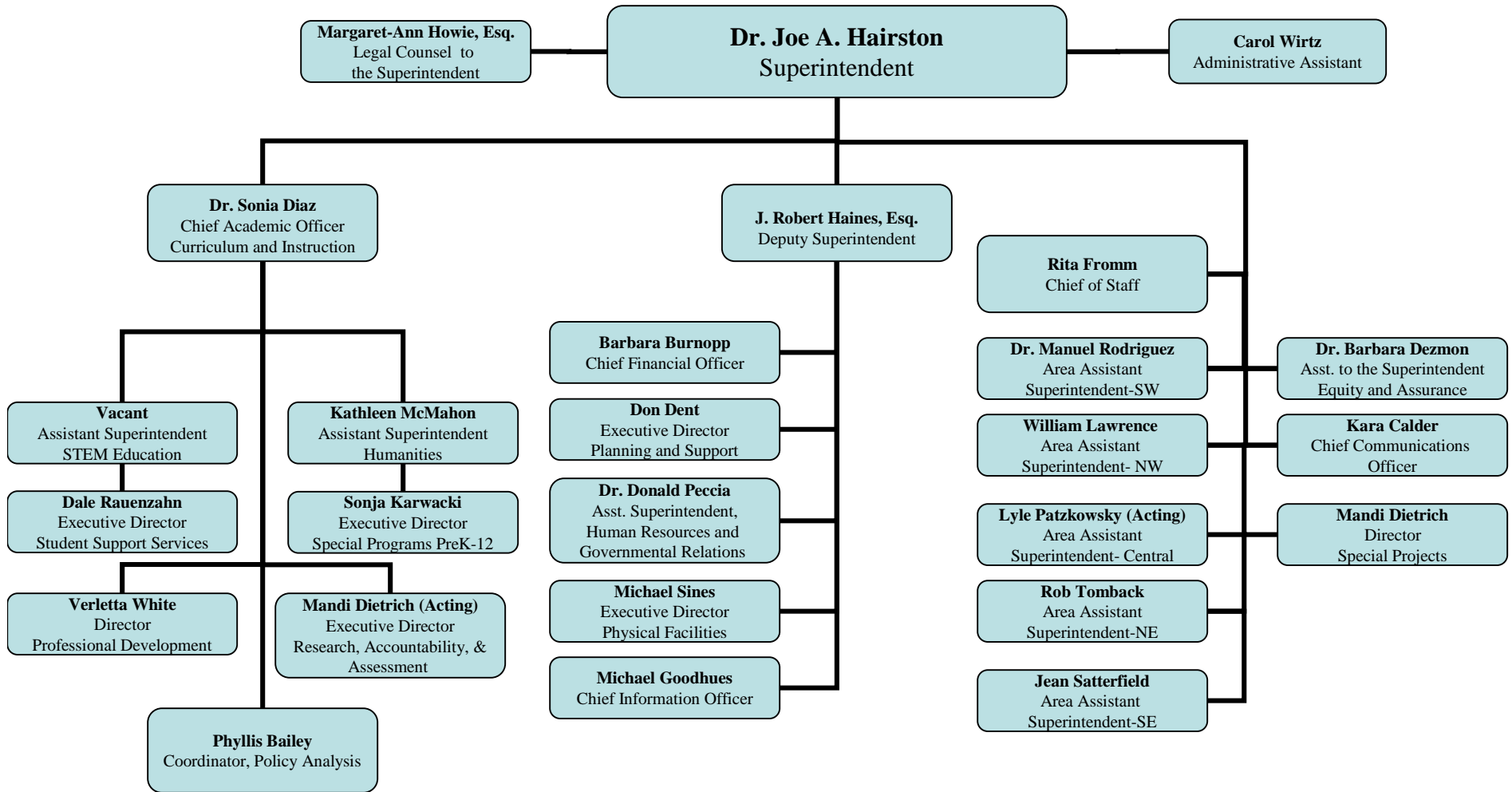
The Baltimore County Public Schools



The Baltimore County Public Schools Office of Internal Audit

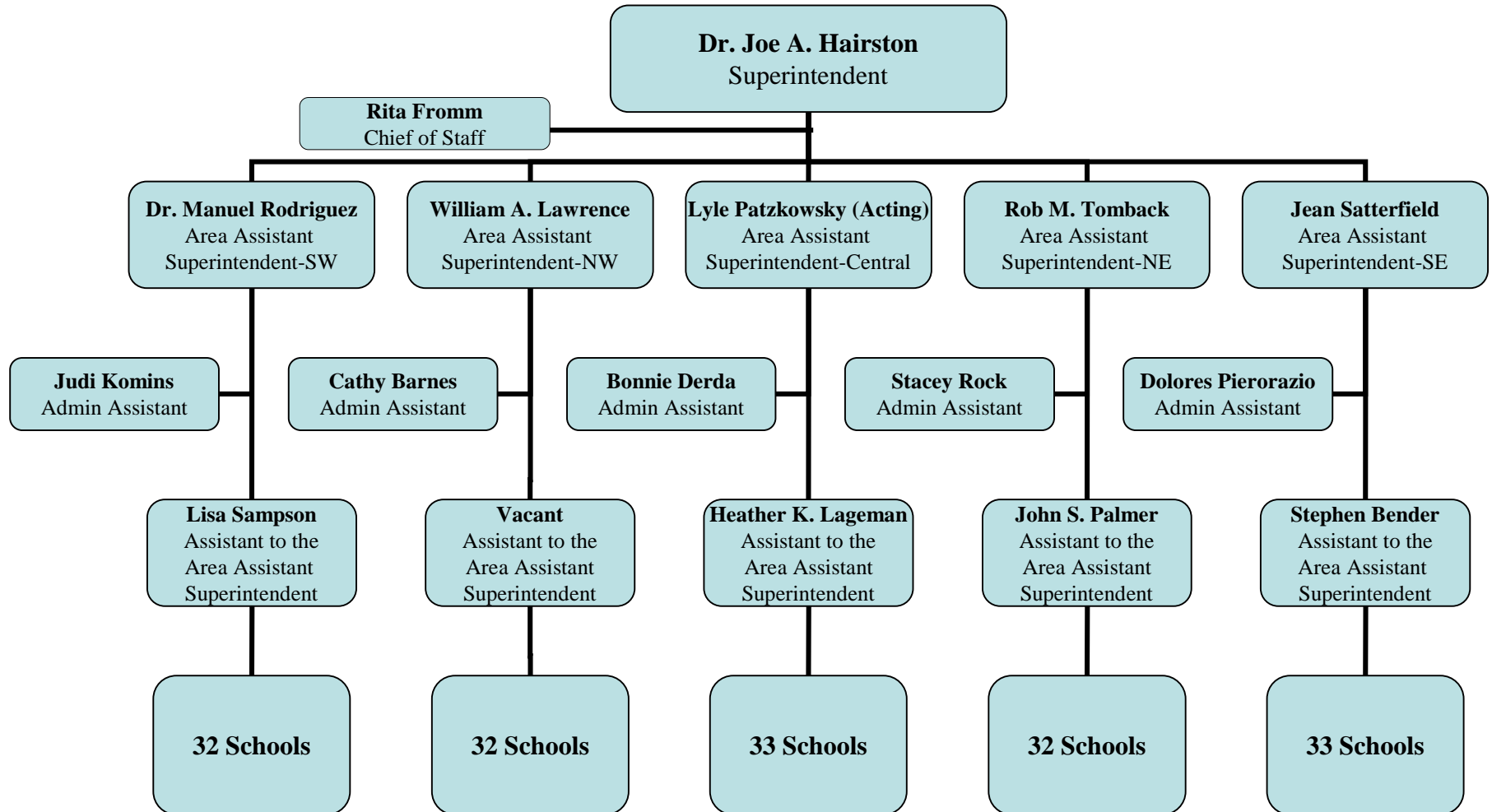


Superintendent of Schools

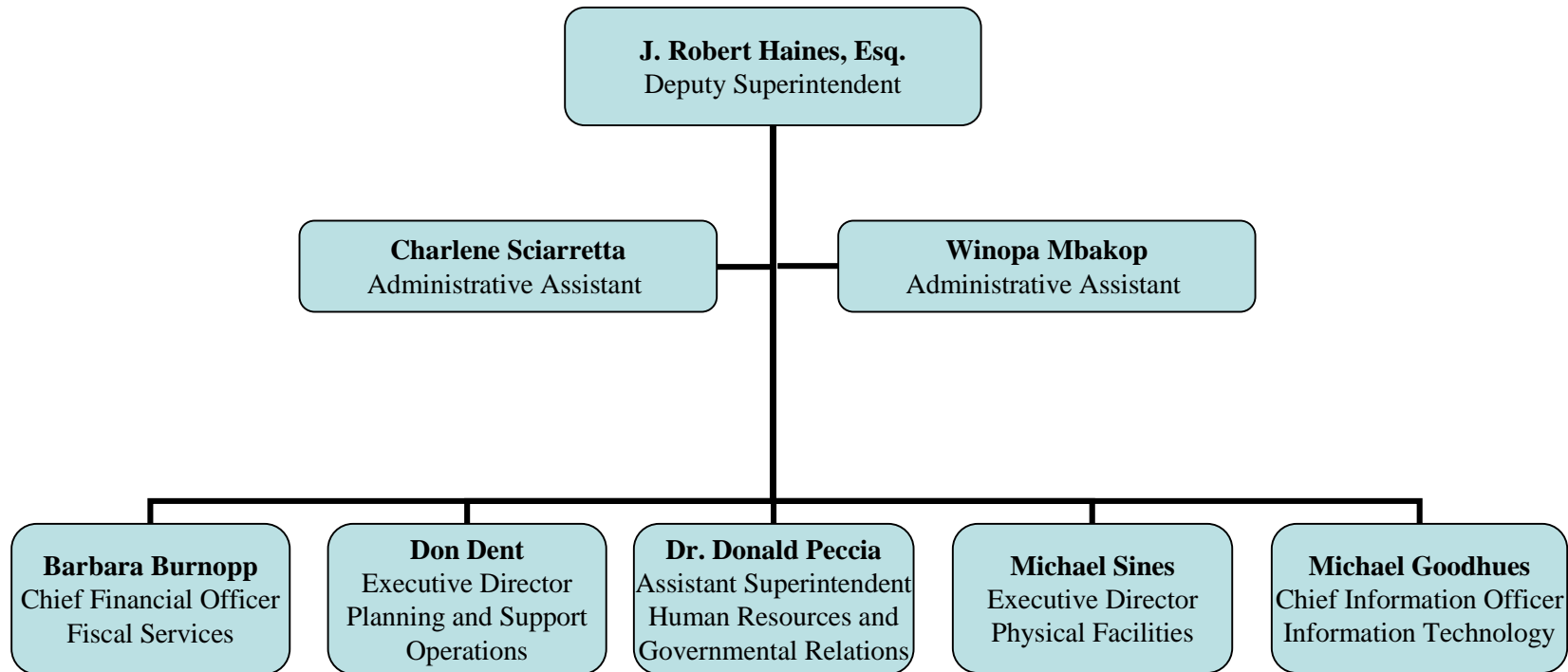


Superintendent of Schools

Area Assistant Superintendents



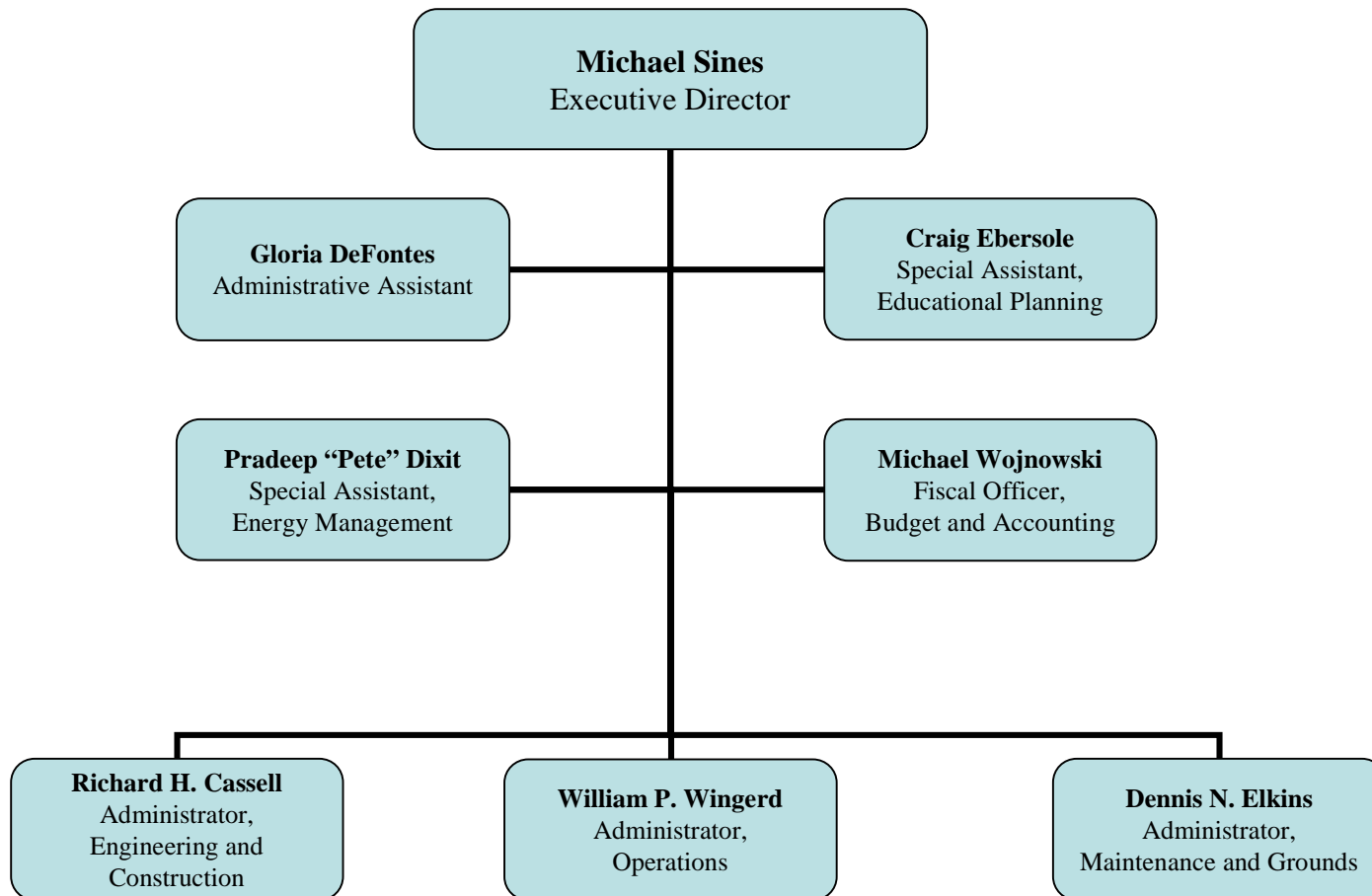
Division of Business Services



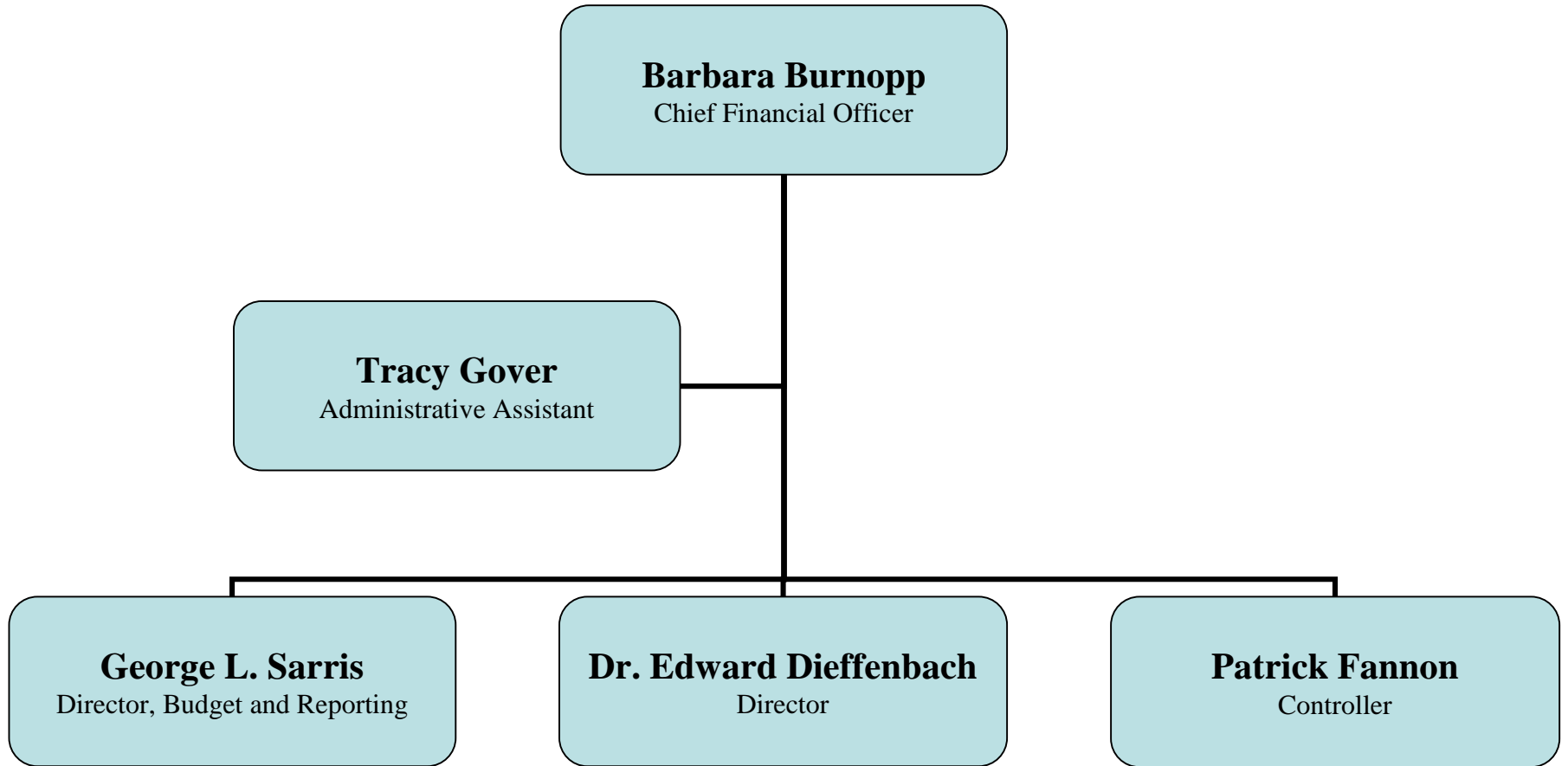
7/12/2006

Organizational charts are
available online at
www.hens.org/system/org_charts

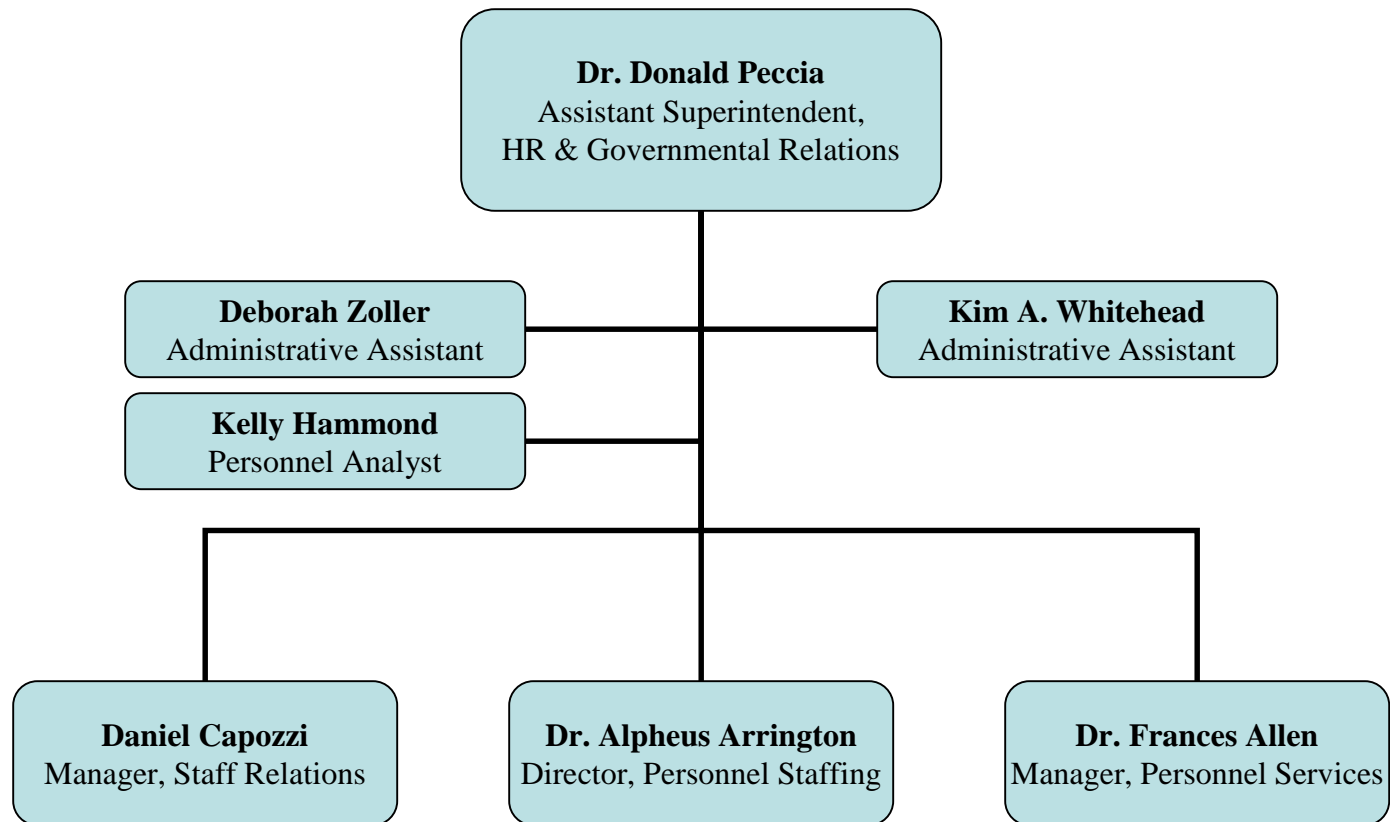
Department of Physical Facilities



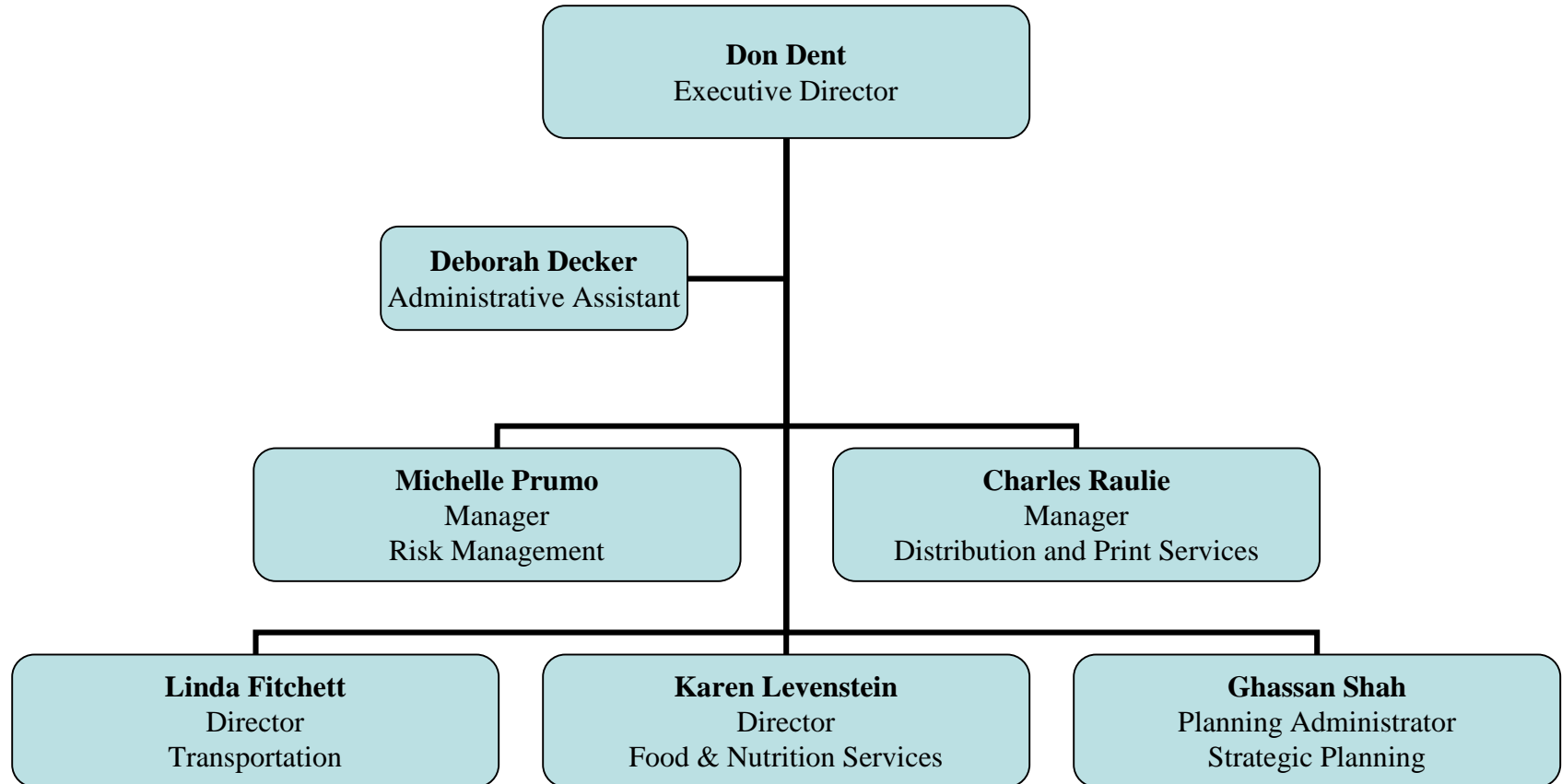
Department of Fiscal Services



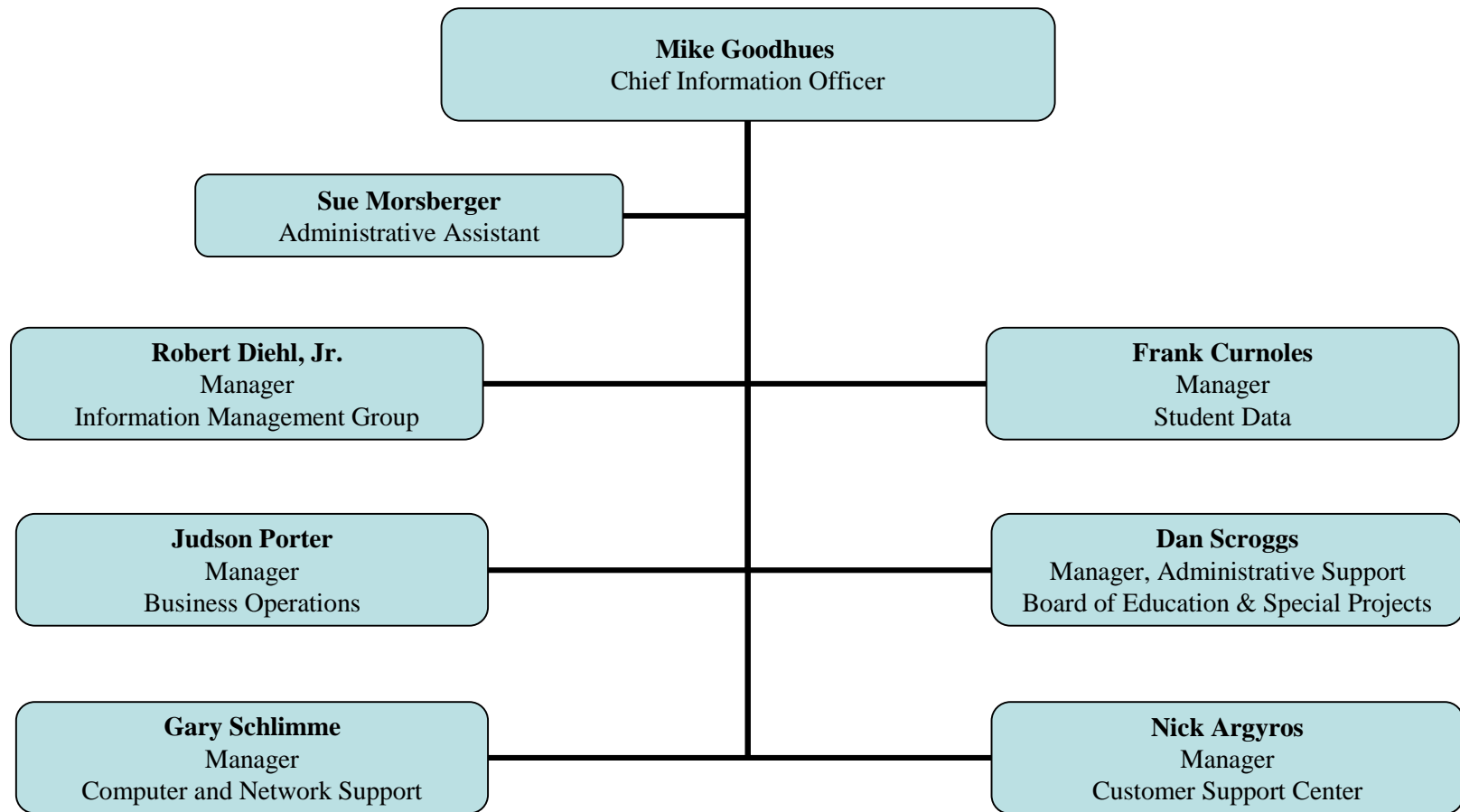
Department of Human Resources



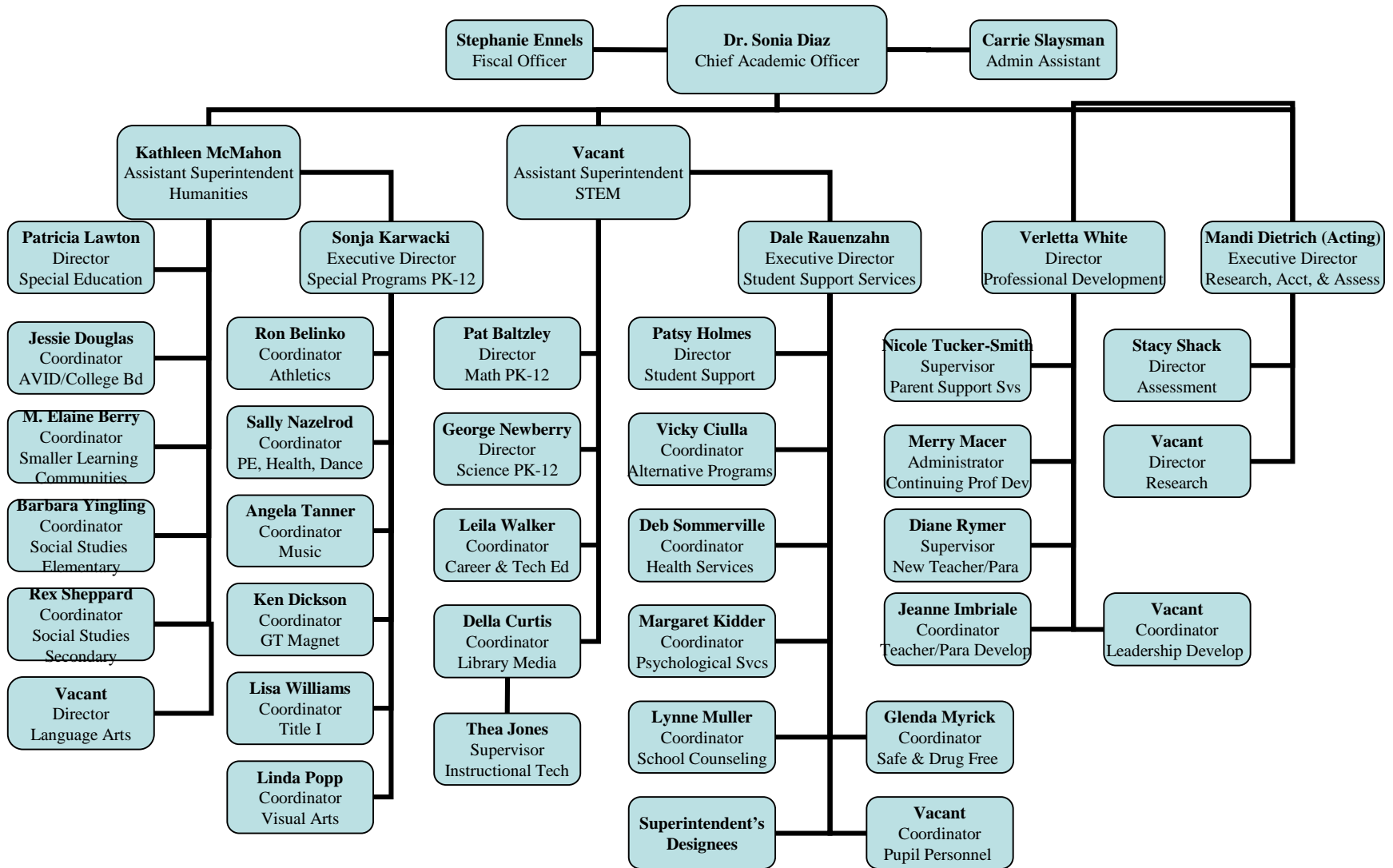
Department of Planning and Support Operations



Department of Technology



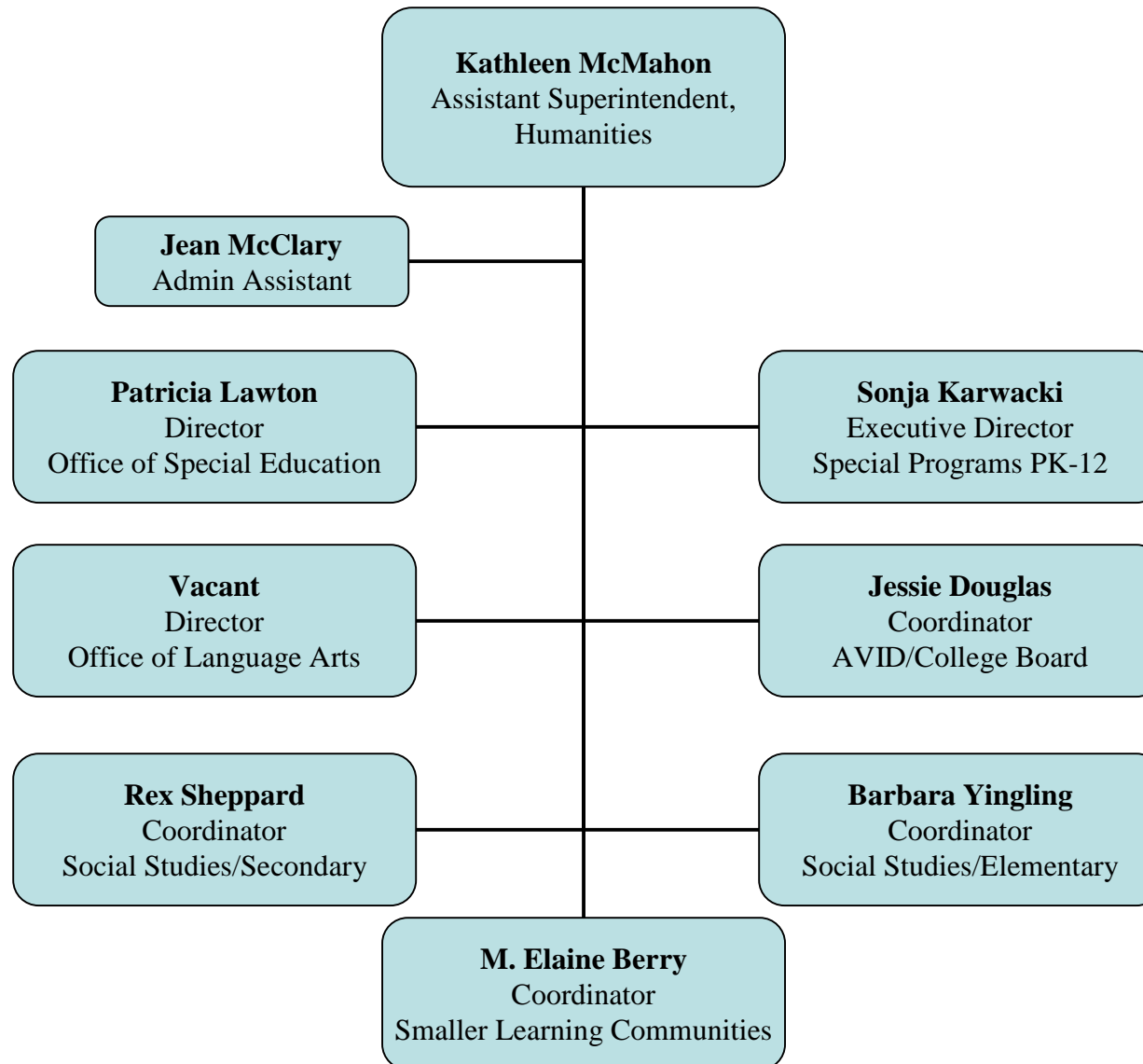
Division of Curriculum and Instruction



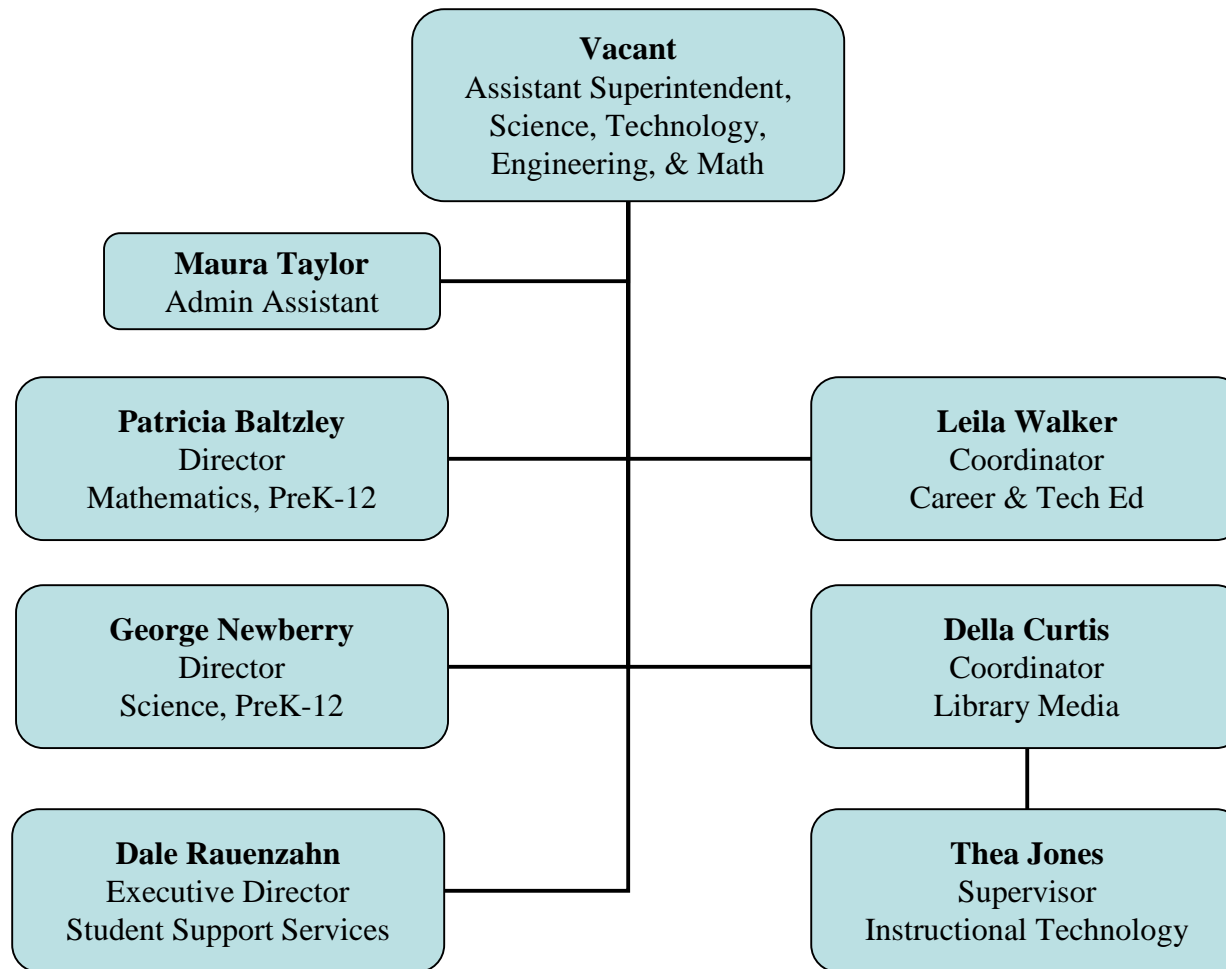
6/22/2007

Organizational charts are
available online at
www.hcns.org/system/org_charts

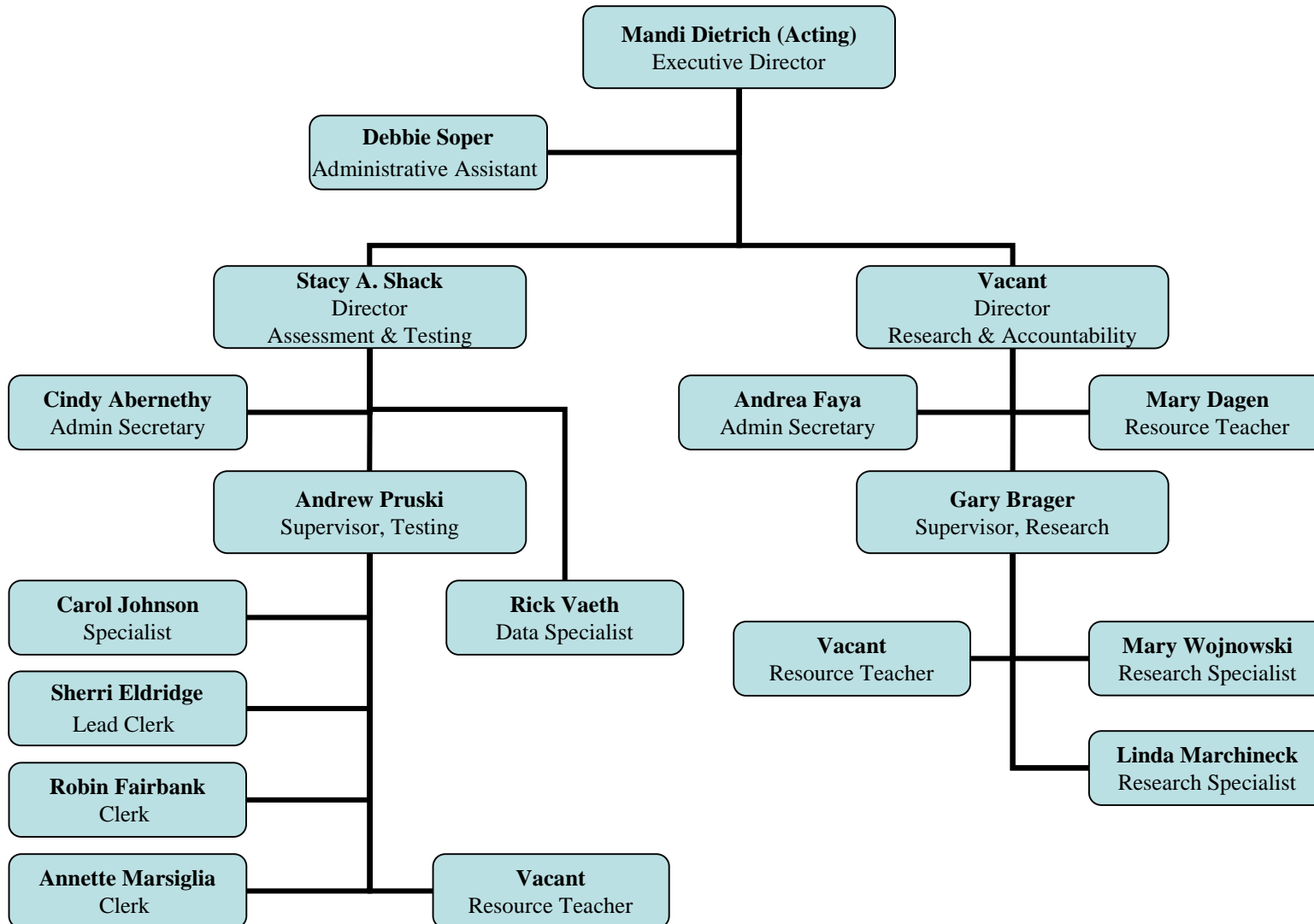
Assistant Superintendent of Humanities



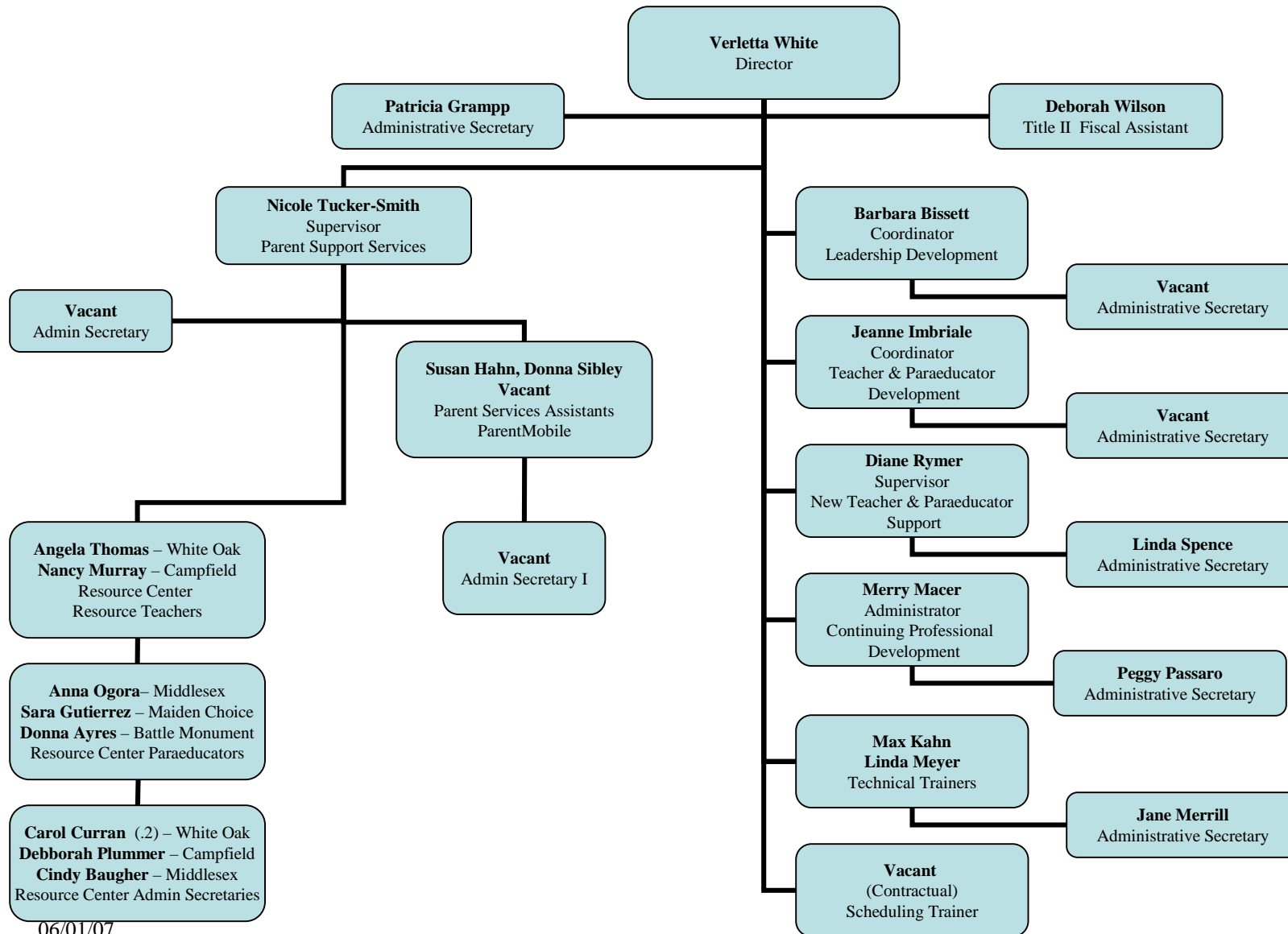
Assistant Superintendent Science, Technology, Engineering, & Mathematics (STEM)



Department of Research, Accountability, and Assessment



Department of Professional Development



06/01/07