

September 30, 2007

Exhibit P

Enrollment Projection and Accuracy Report



Vincent Farm ES Under Construction

Prepared by the Baltimore County Public Schools

Office of Strategic Planning, November 2007



BCPS School Inventory



BCPS now operates:

- 103 Elementary Schools
- 27 Middle Schools
- 24 High Schools
- 11 Centers
- 4 Special Education Schools
- 2 Programs

Performance Indicator 8.5

“The student enrollment projections will have a 99% accuracy rate.”

- BCPS met this goal for September 30 2007 (**99.41%** accuracy)
- The five year average accuracy rate is **99.33%**



Focused on Quality;
Committed to Excellence

Blueprint for Progress

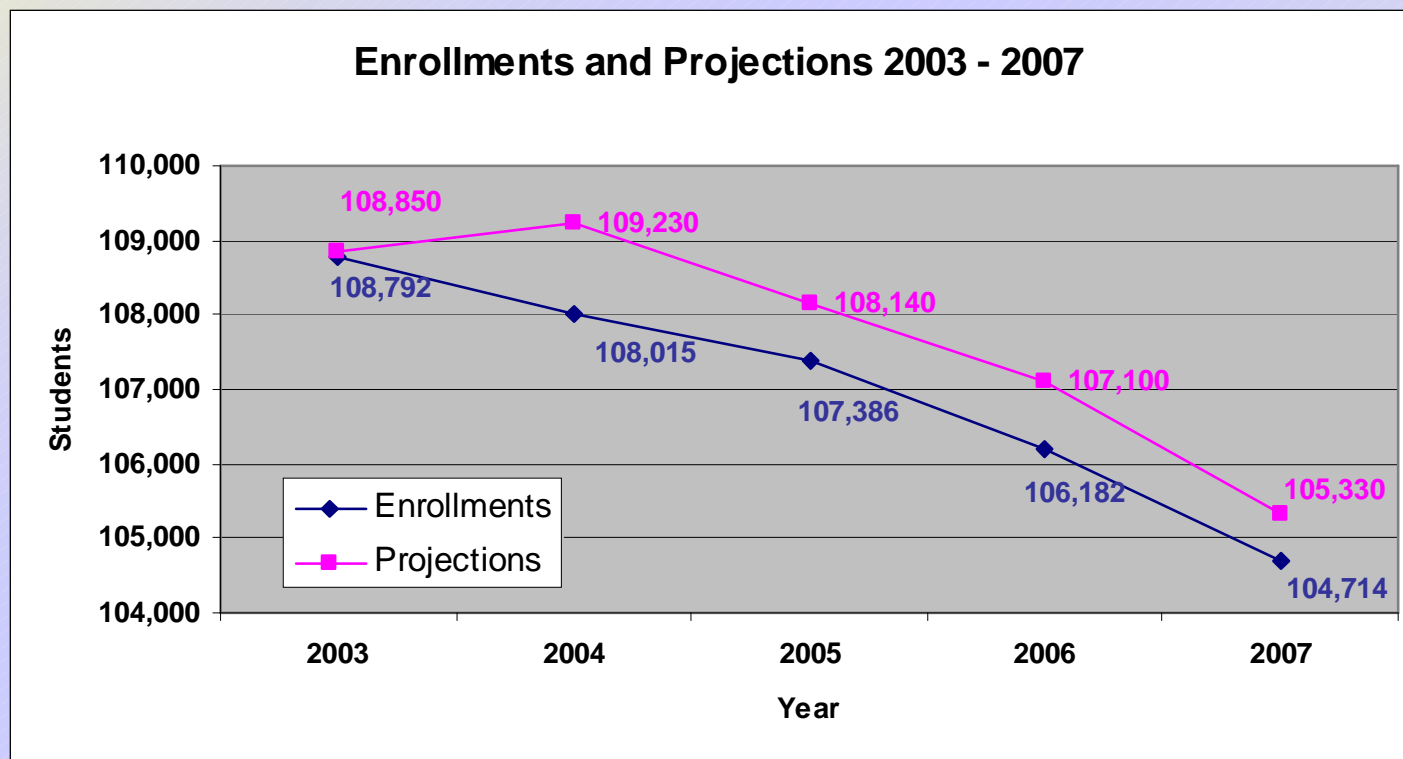
**REALIZING THE
VISION**



Board of Education Resolution November 21, 2000
Adopted January 14, 2003
Revised August 10, 2004
Revised May 24, 2005
Revised June 13, 2006

Enrollment Projection Accuracy

2003	108,850	108,792	-58	99.95%
2004	109,230	108,015	-1215	98.89%
2005	108,140	107,386	-754	99.30%
2006	107,100	106,182	-918	99.14%
2007	105,330	104,714	-616	99.42%



Projection Timeline

- Projections are based on official September 30 enrollment data.
- Timeline
 - July through September – Monitor enrollments weekly.
 - October – Receive September 30 enrollments, map students in Geographic Information System (GIS), reconcile enrollments to prior year projection
 - November - Develop countywide and preliminary one year enrollments by school, obtain input from Area Assistant Superintendents, finalize.
 - December – Develop ten year projections by school.
 - March – Justify projections against Maryland Office of Planning projections.

Projection Methodology

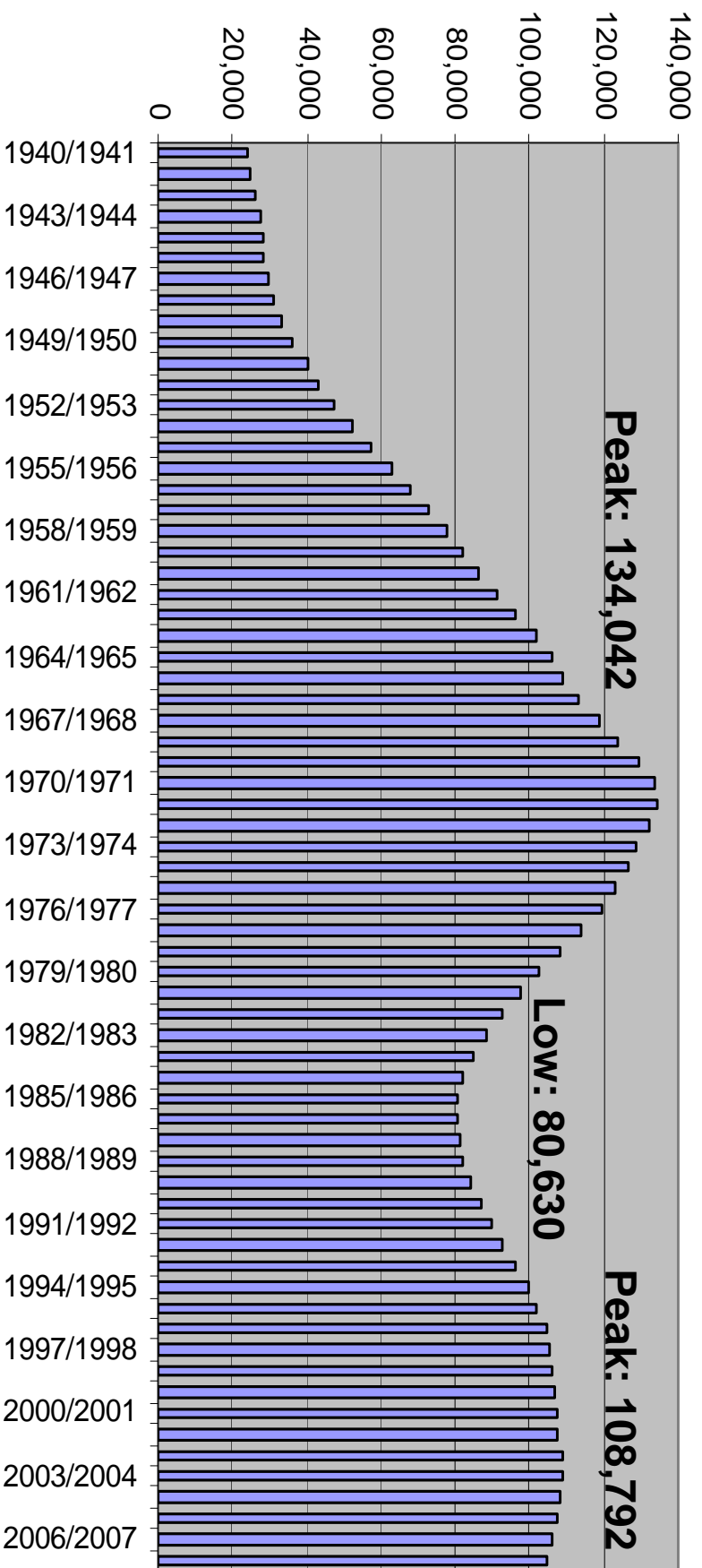
- Projections are in total headcount, not Full Time Equivalency (FTE).
- **Cohort Survival Model** is the foundation for student enrollment projections:
 - Detailed history for more than ten years by school.
 - Only known LEA to obtain birth data by elementary school boundary.
 - Analysis of trends to project student movement through grades.
 - Detailed feeder school pattern data for accurate projection of moving grades (5th to 6th and 8th to 9th).

Projection Methodology, Continued

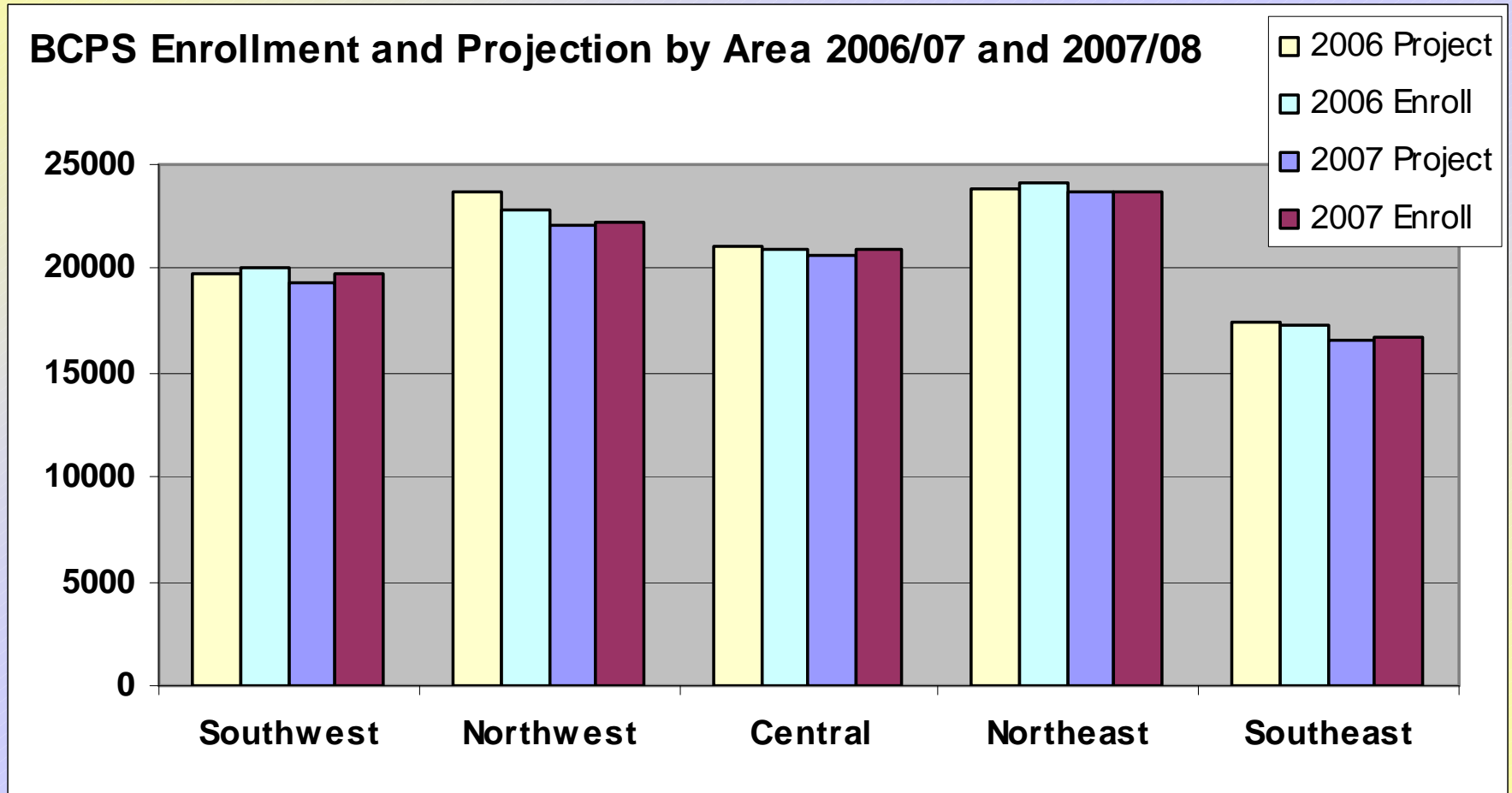
- Linear regression and cluster analysis performed to proof projections.
- Projections analyzed from both a top-down and bottom-up perspectives.
- Input solicited from principals via the Area Assistant Superintendents to fine-tune one year projections.
- Program movement and other factors impacting enrollments are considered.
- Growth trends and student yield factor analysis considered.
- Projections reconciled with Maryland Office of Planning projections each spring to ensure capital agenda alignment.

BCPS Historical Enrollment Trend

BCPS Historical Enrollment, 1940 to Present

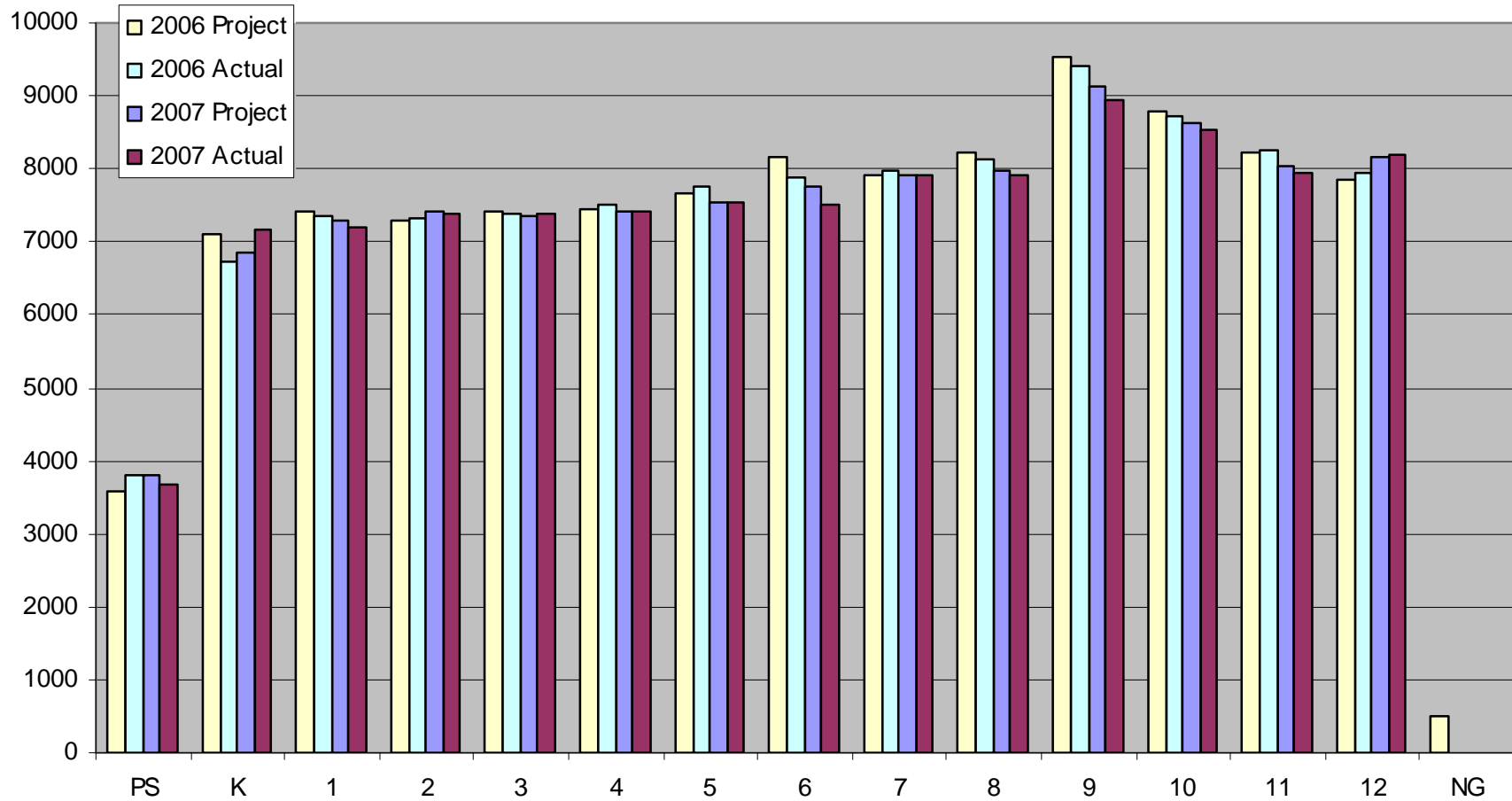


Enrollment by Administrative Areas



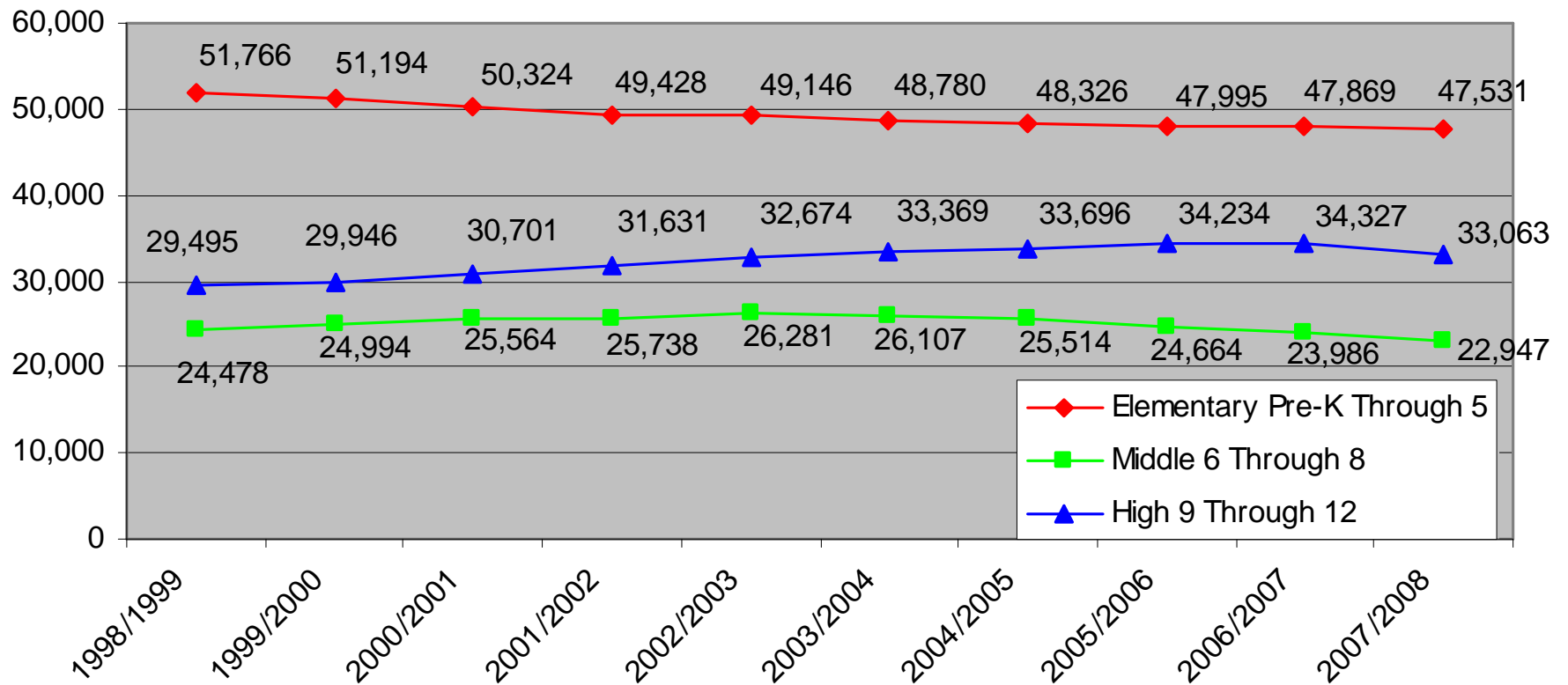
Enrollment By Grade Levels

BCPS Enrollment and Projection by Grade, 2006/07 and 2007/08



Enrollment By Grade Groups

BCPS 10 Year History by Grade Groups, 1998/99 - 2007/08



Next Steps

The Office of Strategic Planning will:

- Meet with each Area Assistant Superintendent to discuss enrollments, projections, capacities, and identify strategies to address concerns.
- Publish updated *September 30 2007 Enrollments, Projections, and Capacities* data book.
- Analyze student population distribution, demographics, and capacity with GIS.
- Develop ten year enrollment projections for 2008 – 2017 in January 2008.

PROGRAM ID: CA1380
 RUN DATE : 10/11/2007
 RUN TIME : 12:13:28

B A L T I M O R E C O U N T Y P U B L I C S C H O O L S

--- ENROLLMENT FOR STATE FUNDING AS OF 09/30/07 ---

SCHOOL	PS	KG	01	02	03	MISC. PROGRAMS						12	NG	TOTAL		
						04	05	06	07	08	09				10	11
Home Assign Inst-El					1	1	1									3
ELEMENTARY TOTALS					1	1	1									3
Group Learning Centr										6						6
MIDDLE TOTALS										6						6
Connections Academy		6	10	10	3	7	7	17	6	16	20	12	1			115
Home Assign Inst-Sec								1	1	4	2	5	9	22		44
ALTERNATIVE TOTALS		6	10	10	3	7	7	18	7	20	22	17	10	22		159
Evening High Schools												14	19	16	57	106
HIGH SCHOOL TOTALS											14	19	16	57		106

PROGRAM ID: CA1380
 RUN DATE : 10/11/2007
 RUN TIME : 12:13:28

B A L T I M O R E C O U N T Y P U B L I C S C H O O L S

--- ENROLLMENT FOR STATE FUNDING AS OF 09/30/07 ---

SCHOOL	SOUTHWESTERN AREA														TOTAL		
	PS	KG	01	02	03	04	05	06	07	08	09	10	11	12		NG	
Arbutus Elementary	21	46	47	52	43	57	42										308
Balto Highlands Elem	61	74	78	64	82	78	86										523
Catonsville Elem	38	46	60	73	49	67	54										387
Chadwick Elem	42	73	73	58	62	62	53										423
Dogwood Elementary	1		114	78	96	94	101										484
Edmondson Hghts Elem	47	74	74	95	87	95	101										573
Featherbed Lane Elem	90	159	90	89	119	87	97										731
Halethorpe Elem	51	57	62	56	48	63	52										389
Hebbyville Elem	48	51	57	74	83	83	75										471
Hillcrest Elem	29	114	101	100	111	91	117										663
Johnnycake Elem	49	85	94	86	93	97	87										591
Lansdowne Elem	52	58	65	57	48	49	51										380
Powhatan Elem	37	42	41	50	59	61	52										342
Relay Elementary	19	75	74	58	76	59	76										437
Riverview Elementary	51	74	90	84	72	60	54										485
Westchester Elem	14	78	82	88	83	77	84										506
Westowne Elementary	68	77	83	75	65	70	79										517
Winfield Elem	47	61	68	66	66	74	65										447
Woodbridge Elem	17	70	60	63	53	56	61										380
Woodmoor Elem	72	84	70	77	80	80	84										547
ELEMENTARY TOTALS	854	1,398	1,483	1,443	1,475	1,460	1,471										9,584
Arbutus Middle						265	284	271									820
Catonsville Middle						204	228	253									685
Lansdowne Middle						250	242	206									698
Meadowwood Educ Ctr						5	13	17									35
Southwest Academy						261	263	282									806
Windsor Mill Middle						210	216	175									601
Woodlawn Middle						222	232	233									687
MIDDLE TOTALS						1,417	1,478	1,437									4,332
Bridge Center						1	4	5	10	1	2						23
ALTERNATIVE TOTALS						1	4	5	10	1	2						23
Caton Ctr Alt Study											16	16	6	3			41
Catonsville High											438	433	463	374			1,708
Lansdowne High											436	342	275	264			1,317
Western Sch/Technol											242	214	237	243			936
Woodlawn High											567	508	377	429			1,881
HIGH SCHOOL TOTALS											1,699	1,513	1,358	1,313			5,883
Maiden Choice School	24	7	3	2	5	1	2	5	8	5	5	4	4	30			105
SPECIAL ED TOTALS	24	7	3	2	5	1	2	5	8	5	5	4	4	30			105

PROGRAM ID: CA1380
 RUN DATE : 10/11/2007
 RUN TIME : 12:13:28

B A L T I M O R E C O U N T Y P U B L I C S C H O O L S

--- ENROLLMENT FOR STATE FUNDING AS OF 09/30/07 ---

SCHOOL	NORTHWESTERN AREA														TOTAL	
	PS	KG	01	02	03	04	05	06	07	08	09	10	11	12		NG
Bedford Elem			52	56	64	66	69									307
Campfield Eclد Ctr	174	143														317
Cedarmere Elementary	39	65	73	77	65	72	85									476
Chatsworth School		57	59	64	66	75	63									384
Church Lane El Tech	22	61	67	83	80	88	91									492
Deer Park Elementary	20	50	50	77	84	73	69									423
Fort Garrison Elem	3	54	63	71	61	69	78									399
Franklin Elementary	32	76	80	77	82	79	84									510
Glyndon Elementary	25	74	68	68	80	80	77									472
Hernwood Elementary	22	58	68	84	63	72	94									461
Milbrook Elementary	1		55	72	74	71	73									346
New Town Elementary	38	105	101	110	113	112	101									680
Owings Mills Elem	66	104	99	131	97	71	113									681
Randallstown Elem		59	59	70	69	68	69									394
Reisterstown Elem	31	62	68	81	71	77	83									473
Scotts Branch Elem		80	83	81	84	82	72									482
Summit Park Elem	15	65	43	48	65	67	56									359
Timber Grove Elem	28	89	91	99	86	86	85									564
Wellwood Intl School	1	68	66	81	69	69	84									438
Winand Elementary	35	60	63	67	81	72	84									462
Woodholme Elem	78	113	108	107	92	110	107									715
ELEMENTARY TOTALS	630	1,443	1,416	1,604	1,546	1,559	1,637									9,835
Deer Park Mid/Magnet								359	374	401						1,134
Franklin Middle								436	446	487						1,369
Old Court Middle								188	171	193						552
Pikesville Middle								285	301	331						917
Sudbrook Magnet Mdl								324	333	347						1,004
MIDDLE TOTALS								1,592	1,625	1,759						4,976
Franklin High											412	406	381	392		1,591
Milford Mill Academy											442	388	333	374		1,537
New Town High											226	251	223	263		963
Owings Mills High											301	281	257	247		1,086
Pikesville High											231	227	247	261		966
Randallstown High											337	327	306	302		1,272
HIGH SCHOOL TOTALS											1,949	1,880	1,747	1,839		7,415

PROGRAM ID: CA1380
 RUN DATE : 10/11/2007
 RUN TIME : 12:13:28

B A L T I M O R E C O U N T Y P U B L I C S C H O O L S

--- ENROLLMENT FOR STATE FUNDING AS OF 09/30/07 ---

SCHOOL	PS	KG	CENTRAL AREA										NG	TOTAL			
			01	02	03	04	05	06	07	08	09	10			11	12	
Carroll Manor Elem		49	57	56	56	58	71										347
Cromwell Elem Magnet		71	73	72	71	72	73										432
Fifth District Elem	7	52	43	38	52	48	40										280
Halstead Academy	50	63	82	92	86	72	86										531
Hampton Elementary	2	78	58	67	55	65	52										377
Jacksonville Elem	9	103	85	83	96	84	100										560
Lutherville Lab Tech	13	71	92	77	72	71	63										459
Oakleigh Elementary	44	64	65	80	70	83	88										494
Padonia Internationa	67	48	39	42	43	45	46										330
Pinewood Elementary	17	80	92	86	74	86	72										507
Pleasant Plains Elem	47	62	84	80	87	76	79										515
Pot Spring Elem	45	86	89	76	84	95	88										563
Prettyboy Elementary	11	80	68	67	80	67	61										434
Riderwood Elem	3	95	83	89	94	68	81										513
Rodgers Forge Elem	2	125	113	122	73	111	79										625
Seventh Dist Elem	9	60	64	70	70	55	63										391
Sparks Elementary	2	91	74	81	88	77	105										518
Stoneleigh Elem	39	86	115	85	107	92	99										623
Timonium Elementary	16	66	61	68	59	79	84										433
Villa Cresta Elem	57	93	76	76	78	77	91										548
Warren Elementary	22	66	50	46	56	51	69										360
ELEMENTARY TOTALS	462	1,589	1,563	1,553	1,551	1,532	1,590										9,840
Cockeysville Middle								233	302	294							829
Dumbarton Middle								357	304	322							983
Hereford Middle								355	349	340							1,044
Loch Raven Tech Acad								182	210	184							576
Ridgely Middle								342	372	350							1,064
MIDDLE TOTALS								1,469	1,537	1,490							4,496
Carver Ctr Arts Tech											192	199	170	147			708
Dulaney High School											469	470	483	503			1,925
Hereford High											334	364	337	360			1,395
Loch Raven High											244	282	263	309			1,098
Towson High School											364	358	351	369			1,442
HIGH SCHOOL TOTALS											1,603	1,673	1,604	1,688			6,568
Ridge Ruxton School	9	5	6	5	6	6	11	9	7	2	6	10	10	30			122
White Oak School	2	4	9	21	20	32	23	5	6	1							123
SPECIAL ED TOTALS	11	9	15	26	26	38	34	14	13	3	6	10	10	30			245

PROGRAM ID: CA1380
 RUN DATE : 10/11/2007
 RUN TIME : 12:13:28

B A L T I M O R E C O U N T Y P U B L I C S C H O O L S

--- ENROLLMENT FOR STATE FUNDING AS OF 09/30/07 ---

SCHOOL	NORTHEASTERN AREA														TOTAL		
	PS	KG	01	02	03	04	05	06	07	08	09	10	11	12		NG	
Carney Elementary	38	65	73	91	76	81	55										479
Chapel Hill Elem	13	135	148	108	134	135	121										794
Elmwood Elementary	57	70	74	66	89	66	83										505
Essex Elementary	47	85	61	69	67	66	70										465
Fullerton Elementary	42	86	76	75	78	84	76										517
Glenmar Elementary	39	65	53	69	78	71	55										430
Gunpowder Elementary	5	79	79	97	81	70	92										503
Harford Hills Elem	23	48	47	64	56	54	62										354
Joppa View Elem	14	79	94	90	93	107	94										571
Kingsville Elem	2	61	52	56	56	54	71										352
Martin Blvd Elem	39	40	52	42	37	42	38										290
McCormick Elementary	44	74	51	62	51	80	77										439
Middlesex Elementary	69	80	78	83	66	55	87										518
Orems Elementary	50	54	45	43	44	46	52										334
Perry Hall Elem	28	71	92	91	86	91	97										556
Pine Grove Elem	31	59	68	74	71	72	81										456
Red House Run Elem	53	74	80	72	72	67	70										488
Seven Oaks Elem	19	62	65	47	65	71	56										385
Shady Spring Elem	48	78	77	103	84	96	91										577
Victory Villa Elem	34	52	47	38	41	53	51										316
ELEMENTARY TOTALS	695	1,417	1,412	1,440	1,425	1,461	1,479										9,329
Golden Ring Middle								218	235	246							699
Middle River Middle								303	293	272							868
Parkville Middle								358	343	401							1,102
Perry Hall Middle								504	502	492							1,498
Pine Grove Middle								328	375	335							1,038
Stemmers Run Middle								233	257	223							713
MIDDLE TOTALS								1,944	2,005	1,969							5,918
Crossroads Center								22	95	111	111	41					380
Rosedale Center								6	22	19	61	52	24	28			212
ALTERNATIVE TOTALS								28	117	130	172	93	24	28			592
Eastern Tech High											308	324	326	278			1,236
Kenwood High School											466	431	443	453			1,793
Overlea High											354	303	289	333			1,279
Parkville High											507	480	411	484			1,882
Perry Hall High											584	594	525	618			2,321
HIGH SCHOOL TOTALS											2,219	2,132	1,994	2,166			8,511

PROGRAM ID: CA1380
 RUN DATE : 10/11/2007
 RUN TIME : 12:13:28

B A L T I M O R E C O U N T Y P U B L I C S C H O O L S

--- ENROLLMENT FOR STATE FUNDING AS OF 09/30/07 ---

SCHOOL	PS	KG	SOUTHEASTERN AREA											TOTAL			
			01	02	03	04	05	06	07	08	09	10	11		12	NG	
Battle Grove Elem	54	58	42	44	44	43	46										331
Bear Creek Elem	41	67	53	64	61	72	70										428
Berkshire Elementary	43	53	43	48	54	43	56										340
Charlesmont Elem	39	53	56	49	49	55	53										354
Chase Elementary	50	39	49	46	48	52	53										337
Chesapeake Terr Elem	18	25	27	39	31	22	28										190
Colgate Elementary	40	49	56	53	44	59	41										342
Deep Creek Elem			96	75	94	83	77										425
Dundalk Elementary	69	98	98	92	89	87	78										611
Eastwood Center	47	28	27	22	26	27	16										193
Edgemere Elementary	45	84	79	77	83	89	83										540
Grange Elementary	41	43	61	48	62	52	59										366
Hawthorne Elementary	113	128	72	62	66	69	61										571
Logan Elementary	42	72	73	73	84	83	87										514
Mars Estates Elem	59	44	56	62	66	57	55										399
Middleborough Elem	43	39	36	39	56	56	29										298
Norwood Elementary	46	121	88	97	89	97	108										646
Oliver Beach Elem	22	42	42	40	38	39	51										274
Sandalwood Elem	40	75	68	75	76	70	69										473
Sandy Plains Elem	64	84	73	86	80	82	78										547
Seneca Elementary	40	47	59	69	62	69	62										408
Sussex Elementary	52	53	45	41	53	49	60										353
ELEMENTARY TOTALS	1,008	1,302	1,299	1,301	1,355	1,355	1,320										8,940
Deep Creek Middle								273	293	278							844
Dundalk Middle								141	150	143							434
Gen John Stricker Mi								258	265	267							790
Holabird Middle								201	245	224							670
Sparrows Pt Middle								144	160	177							481
MIDDLE TOTALS								1,017	1,113	1,089							3,219
Chesapeake High											313	269	265	179			1,026
Dundalk High School											347	324	279	288			1,238
Patapsco High School											365	375	420	353			1,513
Sparrows Point High											207	219	197	180			803
HIGH SCHOOL TOTALS											1,232	1,187	1,161	1,000			4,580
Battle Monument Sch	3	3	1	1	1	1	1	6	7	3	3	2	3	14			49
SPECIAL ED TOTALS	3	3	1	1	1	1	1	6	7	3	3	2	3	14			49

PROGRAM ID: CA1380
 RUN DATE : 10/11/2007
 RUN TIME : 12:13:28

B A L T I M O R E C O U N T Y P U B L I C S C H O O L S

--- ENROLLMENT FOR STATE FUNDING AS OF 09/30/07 ---

SCHOOL	COUNTY ENROLLMENT														TOTAL	
	PS	KG	01	02	03	04	05	06	07	08	09	10	11	12		NG
COUNTY TYPE TOTALS																
ELEMENTARY	3,649	7,149	7,173	7,341	7,353	7,368	7,498									47,531
MIDDLE								7,439	7,758	7,750						22,947
ALTERNATIVE		6	10	10	3	7	7	47	128	155	204	111	36	50		774
SECONDARY											8,716	8,404	7,880	8,063		33,063
SPECIAL EDUCATION	38	19	19	29	32	40	37	25	28	11	14	16	17	74		399
COUNTY TOTALS	3,687	7,174	7,202	7,380	7,388	7,415	7,542	7,511	7,914	7,916	8,934	8,531	7,933	8,187		104,714

* = FULL TIME KDG - 7,174

ELEMENTARY TOTALS	47,531
MIDDLE TOTALS	22,947
ALTERNATIVE TOTALS	774
HIGH SCHOOL TOTALS	33,063
SPECIAL ED TOTALS	399
GRAND TOTAL COUNTY ENROLLMENT	104,714

SOURCE - STUDENT DATA GROUP

PROGRAM ID: CA3790
 RUN DATE : 10/11/2007
 RUN TIME : 15:28:45

B A L T I M O R E C O U N T Y P U B L I C S C H O O L S
 M I N O R I T Y E N R O L L M E N T R E P O R T A S O F 09/30/2007

AREA N ELEMENTARY SCHOOLS	AMERICAN INDIAN	ASIAN	BLACK	HISPANIC	WHITE	MULTI RACIAL	TOTAL SCHOOL ENROLLMENT	TOTAL MINORITY ENROLLMENT	PERCENT MINORITY ENROLLMENT
Home Assign Inst-El	0	0	1	1	1	0	3	2	66.67
AREA N ELEMENTARY TOTAL	0	0	1	1	1	0	3	2	66.67

PROGRAM ID: CA3790
 RUN DATE : 10/11/2007
 RUN TIME : 15:28:45

BALTIMORE COUNTY PUBLIC SCHOOLS
 MINORITY ENROLLMENT REPORT AS OF 09/30/2007

AREA N SECONDARY SCHOOLS	AMERICAN INDIAN	ASIAN	BLACK	HISPANIC	WHITE	MULTI RACIAL	TOTAL SCHOOL ENROLLMENT	TOTAL MINORITY ENROLLMENT	PERCENT MINORITY ENROLLMENT
Group Learning Centr	0	0	5	0	1	0	6	5	83.33
Connections Academy	0	15	40	1	59	0	115	56	48.70
Home Assign Inst-Sec	0	1	33	0	9	1	44	35	79.55
Evening High Schools	1	1	44	2	56	2	106	50	47.17
AREA N SECONDARY TOTAL	1	17	122	3	125	3	271	146	53.87
TOTAL AREA N	1	17	123	4	126	3	274	148	54.01

PROGRAM ID: CA3790
 RUN DATE : 10/11/2007
 RUN TIME : 15:28:45

B A L T I M O R E C O U N T Y P U B L I C S C H O O L S
 M I N O R I T Y E N R O L L M E N T R E P O R T A S O F 09/30/2007

SOUTHWESTERN AREA ELEMENTARY SCHOOLS	AMERICAN INDIAN	ASIAN	BLACK	HISPANIC	WHITE	MULTI RACIAL	TOTAL SCHOOL ENROLLMENT	TOTAL MINORITY ENROLLMENT	PERCENT MINORITY ENROLLMENT
Arbutus Elementary	1	26	36	11	232	2	308	76	24.68
Balto Highlands Elem	2	16	164	83	253	5	523	270	51.63
Catonsville Elem	4	38	91	9	233	12	387	154	39.79
Chadwick Elem	2	120	262	30	6	3	423	417	98.58
Dogwood Elementary	0	21	429	15	14	5	484	470	97.11
Edmondson Hghts Elem	2	7	501	36	20	7	573	553	96.51
Featherbed Lane Elem	0	18	670	33	10	0	731	721	98.63
Halethorpe Elem	4	32	68	21	257	7	389	132	33.93
Hebbville Elem	1	5	427	32	1	5	471	470	99.79
Hillcrest Elem	1	22	134	25	475	6	663	188	28.36
Johnnycake Elem	0	43	433	58	44	13	591	547	92.55
Lansdowne Elem	0	9	88	31	249	3	380	131	34.47
Powhatan Elem	2	0	308	8	21	3	342	321	93.86
Relay Elementary	0	33	76	14	308	6	437	129	29.52
Riverview Elementary	0	1	250	37	195	2	485	290	59.79
Westchester Elem	3	31	71	21	378	2	506	128	25.30
Westowne Elementary	1	26	226	22	228	14	517	289	55.90
Winfield Elem	0	9	407	10	17	4	447	430	96.20
Woodbridge Elem	0	91	217	25	43	4	380	337	88.68
Woodmoor Elem	2	1	491	30	1	22	547	546	99.82
SOUTHWESTERN AREA ELEMENTARY TOTAL	25	549	5349	551	2985	125	9584	6599	68.85

PROGRAM ID: CA3790
 RUN DATE : 10/11/2007
 RUN TIME : 15:28:45

B A L T I M O R E C O U N T Y P U B L I C S C H O O L S
 M I N O R I T Y E N R O L L M E N T R E P O R T A S O F 09/30/2007

SOUTHWESTERN AREA SECONDARY SCHOOLS	AMERICAN INDIAN	ASIAN	BLACK	HISPANIC	WHITE	MULTI RACIAL	TOTAL SCHOOL ENROLLMENT	TOTAL MINORITY ENROLLMENT	PERCENT MINORITY ENROLLMENT
Arbutus Middle	5	47	191	23	533	21	820	287	35.00
Catonsville Middle	1	26	183	12	441	22	685	244	35.62
Lansdowne Middle	2	42	209	100	327	18	698	371	53.15
Meadowood Educ Ctr	0	0	30	0	4	1	35	31	88.57
Southwest Academy	4	47	677	38	27	13	806	779	96.65
Windsor Mill Middle	2	6	560	10	14	9	601	587	97.67
Woodlawn Middle	2	3	646	20	5	11	687	682	99.27
Bridge Center	1	0	13	2	7	0	23	16	69.57
Caton Ctr Alt Study	0	1	30	1	9	0	41	32	78.05
Catonsville High	5	105	446	41	1084	27	1708	624	36.53
Lansdowne High	3	41	336	80	850	7	1317	467	35.46
Western Sch/Technol	2	71	615	19	226	3	936	710	75.85
Woodlawn High	7	75	1682	53	47	17	1881	1834	97.50
SOUTHWESTERN AREA SECONDARY TOTAL	34	464	5618	399	3574	149	10238	6664	65.09

PROGRAM ID: CA3790
 RUN DATE : 10/11/2007
 RUN TIME : 15:28:45

B A L T I M O R E C O U N T Y P U B L I C S C H O O L S
 M I N O R I T Y E N R O L L M E N T R E P O R T A S O F 09/30/2007

SOUTHWESTERN AREA SPECIAL SCHOOLS	AMERICAN INDIAN	ASIAN	BLACK	HISPANIC	WHITE	MULTI RACIAL	TOTAL SCHOOL ENROLLMENT	TOTAL MINORITY ENROLLMENT	PERCENT MINORITY ENROLLMENT
Maiden Choice School	2	5	66	3	29	0	105	76	72.38
SOUTHWESTERN AREA SPECIAL TOTAL	2	5	66	3	29	0	105	76	72.38
TOTAL SOUTHWESTERN AREA	61	1018	11033	953	6588	274	19927	13339	66.94

PROGRAM ID: CA3790
 RUN DATE : 10/11/2007
 RUN TIME : 15:28:45

BALTIMORE COUNTY PUBLIC SCHOOLS
 MINORITY ENROLLMENT REPORT AS OF 09/30/2007

NORTHWESTERN AREA ELEMENTARY SCHOOLS	AMERICAN INDIAN	ASIAN	BLACK	HISPANIC	WHITE	MULTI RACIAL	TOTAL SCHOOL ENROLLMENT	TOTAL MINORITY ENROLLMENT	PERCENT MINORITY ENROLLMENT
Bedford Elem	1	5	261	21	12	7	307	295	96.09
Campfield Ecl'd Ctr	1	24	232	26	34	0	317	283	89.27
Cedarmere Elementary	5	21	209	77	150	14	476	326	68.49
Chatsworth School	0	13	104	5	258	4	384	126	32.81
Church Lane El Tech	1	24	427	17	15	8	492	477	96.95
Deer Park Elementary	0	4	395	13	6	5	423	417	98.58
Fort Garrison Elem	1	18	48	5	326	1	399	73	18.30
Franklin Elementary	1	24	85	23	375	2	510	135	26.47
Glyndon Elementary	2	44	164	40	212	10	472	260	55.08
Hernwood Elementary	0	2	421	4	31	3	461	430	93.28
Milbrook Elementary	6	5	270	27	30	8	346	316	91.33
New Town Elementary	4	57	502	23	76	18	680	604	88.82
Owings Mills Elem	2	52	430	79	94	24	681	587	86.20
Randallstown Elem	3	9	353	12	9	8	394	385	97.72
Reisterstown Elem	1	46	129	53	234	10	473	239	50.53
Scotts Branch Elem	1	9	440	27	2	3	482	480	99.59
Summit Park Elem	0	21	54	3	281	0	359	78	21.73
Timber Grove Elem	0	47	231	51	212	23	564	352	62.41
Wellwood Intl School	0	89	251	17	70	11	438	368	84.02
Winand Elementary	3	15	422	9	11	2	462	451	97.62
Woodholme Elem	4	58	552	32	64	5	715	651	91.05
NORTHWESTERN AREA ELEMENTARY TOTAL	36	587	5980	564	2502	166	9835	7333	74.56

PROGRAM ID: CA3790
 RUN DATE : 10/11/2007
 RUN TIME : 15:28:45

B A L T I M O R E C O U N T Y P U B L I C S C H O O L S
 M I N O R I T Y E N R O L L M E N T R E P O R T A S O F 09/30/2007

NORTHWESTERN AREA SECONDARY SCHOOLS	AMERICAN INDIAN	ASIAN	BLACK	HISPANIC	WHITE	MULTI RACIAL	TOTAL SCHOOL ENROLLMENT	TOTAL MINORITY ENROLLMENT	PERCENT MINORITY ENROLLMENT
Deer Park Mid/Magnet	4	28	1003	33	47	19	1134	1087	95.86
Franklin Middle	4	84	449	62	730	40	1369	639	46.68
Old Court Middle	2	15	507	6	16	6	552	536	97.10
Pikesville Middle	2	34	550	33	274	24	917	643	70.12
Sudbrook Magnet Mdl	2	55	575	45	294	33	1004	710	70.72
Franklin High	9	80	483	71	931	17	1591	660	41.48
Milford Mill Academy	6	23	1438	32	22	16	1537	1515	98.57
New Town High	3	20	866	17	40	17	963	923	95.85
Owings Mills High	4	66	524	106	375	11	1086	711	65.47
Pikesville High	5	42	383	15	512	9	966	454	47.00
Randallstown High	5	17	1197	11	33	9	1272	1239	97.41
NORTHWESTERN AREA SECONDARY TOTAL	46	464	7975	431	3274	201	12391	9117	73.58
TOTAL NORTHWESTERN AREA	82	1051	13955	995	5776	367	22226	16450	74.01

PROGRAM ID: CA3790
 RUN DATE : 10/11/2007
 RUN TIME : 15:28:45

B A L T I M O R E C O U N T Y P U B L I C S C H O O L S
 M I N O R I T Y E N R O L L M E N T R E P O R T A S O F 09/30/2007

CENTRAL AREA ELEMENTARY SCHOOLS	AMERICAN INDIAN	ASIAN	BLACK	HISPANIC	WHITE	MULTI RACIAL	TOTAL SCHOOL ENROLLMENT	TOTAL MINORITY ENROLLMENT	PERCENT MINORITY ENROLLMENT
Carroll Manor Elem	0	17	1	1	328	0	347	19	5.48
Cromwell Elem Magnet	0	38	106	10	270	8	432	162	37.50
Fifth District Elem	1	7	3	4	264	1	280	16	5.71
Halstead Academy	2	6	503	4	14	2	531	517	97.36
Hampton Elementary	0	34	47	15	273	8	377	104	27.59
Jacksonville Elem	0	35	16	13	494	2	560	66	11.79
Lutherville Lab Tech	1	64	64	15	310	5	459	149	32.46
Oakleigh Elementary	2	57	147	33	244	11	494	250	50.61
Padonia Internationa	0	90	83	44	107	6	330	223	67.58
Pinewood Elementary	3	60	28	6	407	3	507	100	19.72
Pleasant Plains Elem	8	35	303	34	125	10	515	390	75.73
Pot Spring Elem	5	98	140	52	263	5	563	300	53.29
Prettyboy Elementary	0	4	13	8	407	2	434	27	6.22
Riderwood Elem	0	28	10	10	465	0	513	48	9.36
Rodgers Forge Elem	0	71	19	13	515	7	625	110	17.60
Seventh Dist Elem	4	8	19	5	352	3	391	39	9.97
Sparks Elementary	0	13	21	10	474	0	518	44	8.49
Stoneleigh Elem	2	46	84	27	456	8	623	167	26.81
Timonium Elementary	0	42	17	25	346	3	433	87	20.09
Villa Cresta Elem	0	27	121	19	380	1	548	168	30.66
Warren Elementary	1	41	119	17	182	0	360	178	49.44
CENTRAL AREA ELEMENTARY TOTAL	29	821	1864	365	6676	85	9840	3164	32.15

PROGRAM ID: CA3790
 RUN DATE : 10/11/2007
 RUN TIME : 15:28:45

B A L T I M O R E C O U N T Y P U B L I C S C H O O L S
 M I N O R I T Y E N R O L L M E N T R E P O R T A S O F 09/30/2007

CENTRAL AREA SECONDARY SCHOOLS	AMERICAN INDIAN	ASIAN	BLACK	HISPANIC	WHITE	MULTI RACIAL	TOTAL SCHOOL ENROLLMENT	TOTAL MINORITY ENROLLMENT	PERCENT MINORITY ENROLLMENT
Cockeysville Middle	6	89	229	34	466	5	829	363	43.79
Dumbarton Middle	4	110	207	49	595	18	983	388	39.47
Hereford Middle	3	16	70	15	934	6	1044	110	10.54
Loch Raven Tech Acad	3	10	466	12	73	12	576	503	87.33
Ridgely Middle	3	127	102	23	795	14	1064	269	25.28
Carver Ctr Arts Tech	1	21	256	14	416	0	708	292	41.24
Dulaney High School	8	264	238	60	1339	16	1925	586	30.44
Hereford High	2	26	32	24	1301	10	1395	94	6.74
Loch Raven High	2	83	221	28	745	19	1098	353	32.15
Towson High School	6	91	264	34	1029	18	1442	413	28.64
CENTRAL AREA SECONDARY TOTAL	38	837	2085	293	7693	118	11064	3371	30.47

PROGRAM ID: CA3790
 RUN DATE : 10/11/2007
 RUN TIME : 15:28:45

B A L T I M O R E C O U N T Y P U B L I C S C H O O L S
 M I N O R I T Y E N R O L L M E N T R E P O R T A S O F 09/30/2007

CENTRAL AREA SPECIAL SCHOOLS	AMERICAN INDIAN	ASIAN	BLACK	HISPANIC	WHITE	MULTI RACIAL	TOTAL SCHOOL ENROLLMENT	TOTAL MINORITY ENROLLMENT	PERCENT MINORITY ENROLLMENT
Ridge Ruxton School	1	11	27	6	76	1	122	46	37.70
White Oak School	1	0	51	2	69	0	123	54	43.90
CENTRAL AREA SPECIAL TOTAL	2	11	78	8	145	1	245	100	40.82
TOTAL CENTRAL AREA	69	1669	4027	666	14514	204	21149	6635	31.37

PROGRAM ID: CA3790
 RUN DATE : 10/11/2007
 RUN TIME : 15:28:45

BALTIMORE COUNTY PUBLIC SCHOOLS
 MINORITY ENROLLMENT REPORT AS OF 09/30/2007

NORTHEASTERN AREA ELEMENTARY SCHOOLS	AMERICAN INDIAN	ASIAN	BLACK	HISPANIC	WHITE	MULTI RACIAL	TOTAL SCHOOL ENROLLMENT	TOTAL MINORITY ENROLLMENT	PERCENT MINORITY ENROLLMENT
Carney Elementary	2	77	97	16	286	1	479	193	40.29
Chapel Hill Elem	2	126	132	23	511	0	794	283	35.64
Elmwood Elementary	4	17	249	31	201	3	505	304	60.20
Essex Elementary	10	15	39	34	367	0	465	98	21.08
Fullerton Elementary	7	44	120	11	331	4	517	186	35.98
Glenmar Elementary	1	20	231	48	129	1	430	301	70.00
Gunpowder Elementary	0	62	64	8	366	3	503	137	27.24
Harford Hills Elem	3	45	100	18	182	6	354	172	48.59
Joppa View Elem	3	60	136	21	347	4	571	224	39.23
Kingsville Elem	1	12	7	7	324	1	352	28	7.95
Martin Blvd Elem	2	6	89	33	154	6	290	136	46.90
McCormick Elementary	2	2	396	6	33	0	439	406	92.48
Middlesex Elementary	5	7	174	36	292	4	518	226	43.63
Orems Elementary	2	9	38	14	266	5	334	68	20.36
Perry Hall Elem	2	60	77	25	385	7	556	171	30.76
Pine Grove Elem	0	48	84	15	302	7	456	154	33.77
Red House Run Elem	1	25	140	48	273	1	488	215	44.06
Seven Oaks Elem	1	48	63	11	259	3	385	126	32.73
Shady Spring Elem	1	61	342	65	100	8	577	477	82.67
Victory Villa Elem	3	10	87	34	180	2	316	136	43.04
NORTHEASTERN AREA ELEMENTARY TOTAL	52	754	2665	504	5288	66	9329	4041	43.32

PROGRAM ID: CA3790
 RUN DATE : 10/11/2007
 RUN TIME : 15:28:45

B A L T I M O R E C O U N T Y P U B L I C S C H O O L S
 M I N O R I T Y E N R O L L M E N T R E P O R T A S O F 09/30/2007

NORTHEASTERN AREA SECONDARY SCHOOLS	AMERICAN INDIAN	ASIAN	BLACK	HISPANIC	WHITE	MULTI RACIAL	TOTAL SCHOOL ENROLLMENT	TOTAL MINORITY ENROLLMENT	PERCENT MINORITY ENROLLMENT
Golden Ring Middle	6	15	474	40	156	8	699	543	77.68
Middle River Middle	6	17	294	42	482	27	868	386	44.47
Parkville Middle	5	42	261	33	749	12	1102	353	32.03
Perry Hall Middle	9	139	253	32	1036	29	1498	462	30.84
Pine Grove Middle	6	108	210	27	676	11	1038	362	34.87
Stemmers Run Middle	3	13	146	32	512	7	713	201	28.19
Crossroads Center	5	2	168	12	191	2	380	189	49.74
Rosedale Center	3	3	83	3	117	3	212	95	44.81
Eastern Tech High	3	49	198	26	950	10	1236	286	23.14
Kenwood High School	18	23	447	52	1233	20	1793	560	31.23
Overlea High	12	27	782	42	400	16	1279	879	68.73
Parkville High	16	149	791	81	827	18	1882	1055	56.06
Perry Hall High	8	189	329	46	1728	21	2321	593	25.55
NORTHEASTERN AREA SECONDARY TOTAL	100	776	4436	468	9057	184	15021	5964	39.70
TOTAL NORTHEASTERN AREA	152	1530	7101	972	14345	250	24350	10005	41.09

PROGRAM ID: CA3790
 RUN DATE : 10/11/2007
 RUN TIME : 15:28:45

B A L T I M O R E C O U N T Y P U B L I C S C H O O L S
 M I N O R I T Y E N R O L L M E N T R E P O R T A S O F 09/30/2007

SOUTHEASTERN AREA ELEMENTARY SCHOOLS	AMERICAN INDIAN	ASIAN	BLACK	HISPANIC	WHITE	MULTI RACIAL	TOTAL SCHOOL ENROLLMENT	TOTAL MINORITY ENROLLMENT	PERCENT MINORITY ENROLLMENT
Battle Grove Elem	7	4	31	4	283	2	331	48	14.50
Bear Creek Elem	5	7	34	12	368	2	428	60	14.02
Berkshire Elementary	5	3	52	19	261	0	340	79	23.24
Charlesmont Elem	10	9	32	22	277	4	354	77	21.75
Chase Elementary	1	5	93	12	223	3	337	114	33.83
Chesapeake Terr Elem	0	0	4	2	183	1	190	7	3.68
Colgate Elementary	8	12	43	50	223	6	342	119	34.80
Deep Creek Elem	3	3	320	34	61	4	425	364	85.65
Dundalk Elementary	11	7	268	38	282	5	611	329	53.85
Eastwood Center	1	4	26	5	157	0	193	36	18.65
Edgemere Elementary	5	7	35	16	477	0	540	63	11.67
Grange Elementary	4	5	38	10	306	3	366	60	16.39
Hawthorne Elementary	5	2	262	29	267	6	571	304	53.24
Logan Elementary	8	0	230	28	246	2	514	268	52.14
Mars Estates Elem	0	13	174	41	159	12	399	240	60.15
Middleborough Elem	1	7	47	4	235	4	298	63	21.14
Norwood Elementary	16	43	80	79	417	11	646	229	35.45
Oliver Beach Elem	0	2	11	0	261	0	274	13	4.74
Sandalwood Elem	0	4	370	48	47	4	473	426	90.06
Sandy Plains Elem	12	11	131	36	349	8	547	198	36.20
Seneca Elementary	1	3	127	12	260	5	408	148	36.27
Sussex Elementary	2	11	114	37	184	5	353	169	47.88
SOUTHEASTERN AREA ELEMENTARY TOTAL	105	162	2522	538	5526	87	8940	3414	38.19

PROGRAM ID: CA3790
 RUN DATE : 10/11/2007
 RUN TIME : 15:28:45

B A L T I M O R E C O U N T Y P U B L I C S C H O O L S
 M I N O R I T Y E N R O L L M E N T R E P O R T A S O F 09/30/2007

SOUTHEASTERN AREA SECONDARY SCHOOLS	AMERICAN INDIAN	ASIAN	BLACK	HISPANIC	WHITE	MULTI RACIAL	TOTAL SCHOOL ENROLLMENT	TOTAL MINORITY ENROLLMENT	PERCENT MINORITY ENROLLMENT
Deep Creek Middle	4	14	468	44	298	16	844	546	64.69
Dundalk Middle	3	4	170	19	236	2	434	198	45.62
Gen John Stricker Mi	9	9	100	22	646	4	790	144	18.23
Holabird Middle	13	33	72	82	454	16	670	216	32.24
Sparrows Pt Middle	0	1	32	7	433	8	481	48	9.98
Chesapeake High	5	11	488	55	459	8	1026	567	55.26
Dundalk High School	18	45	275	76	808	16	1238	430	34.73
Patapsco High School	12	22	221	31	1211	16	1513	302	19.96
Sparrows Point High	7	8	40	6	736	6	803	67	8.34
SOUTHEASTERN AREA SECONDARY TOTAL	71	147	1866	342	5281	92	7799	2518	32.29

PROGRAM ID: CA3790
 RUN DATE : 10/11/2007
 RUN TIME : 15:28:45

B A L T I M O R E C O U N T Y P U B L I C S C H O O L S
 M I N O R I T Y E N R O L L M E N T R E P O R T A S O F 09/30/2007

SOUTHEASTERN AREA SPECIAL SCHOOLS	AMERICAN INDIAN	ASIAN	BLACK	HISPANIC	WHITE	MULTI RACIAL	TOTAL SCHOOL ENROLLMENT	TOTAL MINORITY ENROLLMENT	PERCENT MINORITY ENROLLMENT
Battle Monument Sch	0	0	14	1	34	0	49	15	30.61
SOUTHEASTERN AREA SPECIAL TOTAL	0	0	14	1	34	0	49	15	30.61
TOTAL SOUTHEASTERN AREA	176	309	4402	881	10841	179	16788	5947	35.42

PROGRAM ID: CA3790
 RUN DATE : 10/11/2007
 RUN TIME : 15:28:45

B A L T I M O R E C O U N T Y P U B L I C S C H O O L S
 M I N O R I T Y E N R O L L M E N T R E P O R T A S O F 09/30/2007

COUNTY TOTALS	AMERICAN INDIAN	ASIAN	BLACK	HISPANIC	WHITE	MULTI RACIAL	TOTAL COUNTY ENROLLMENT	TOTAL MINORITY ENROLLMENT	PERCENT MINORITY ENROLLMENT
ELEMENTARY TOTAL	247	2873	18381	2523	22978	529	47531	24024	50.54
SECONDARY TOTAL	290	2705	22102	1936	29004	747	56784	27033	47.61
SPECIAL SCHOOLS TOTAL	4	16	158	12	208	1	399	190	47.62
COUNTY TOTAL	541	5594	40641	4471	52190	1277	104714	52524	50.16