

BALTIMORE COUNTY PUBLIC SCHOOLS

DATE: June 15, 2010

TO: **BOARD OF EDUCATION**

FROM: Dr. Joe A. Hairston, Superintendent

SUBJECT: **CONSIDERATION OF THE PROPOSED BALTIMORE
COUNTY PUBLIC SCHOOLS' ORGANIZATION CHARTS
FOR 2010-2011**

ORIGINATOR: J. Robert Haines, Esquire, Deputy Superintendent

**RESOURCE
PERSON(S):** Dr. Donald Peccia, Assistant Superintendent, Human Resources

RECOMMENDATION

In accordance with Policy 2310, organization charts have been prepared by the Superintendent of Schools for approval by the Board of Education.

Attachments – Organization Charts



ORGANIZATION CHARTS

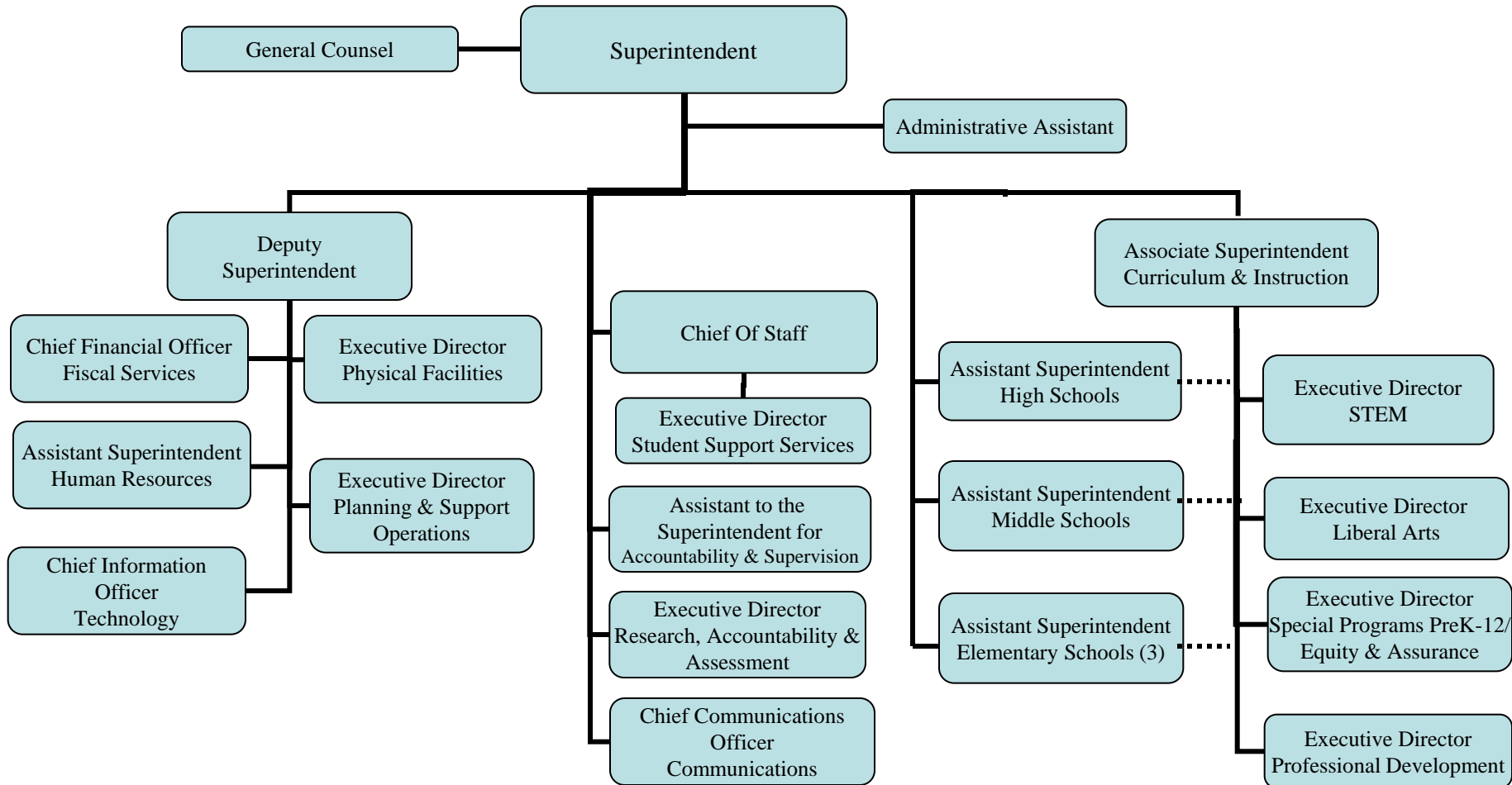
FY 2011

The Baltimore County Public Schools Organization Charts

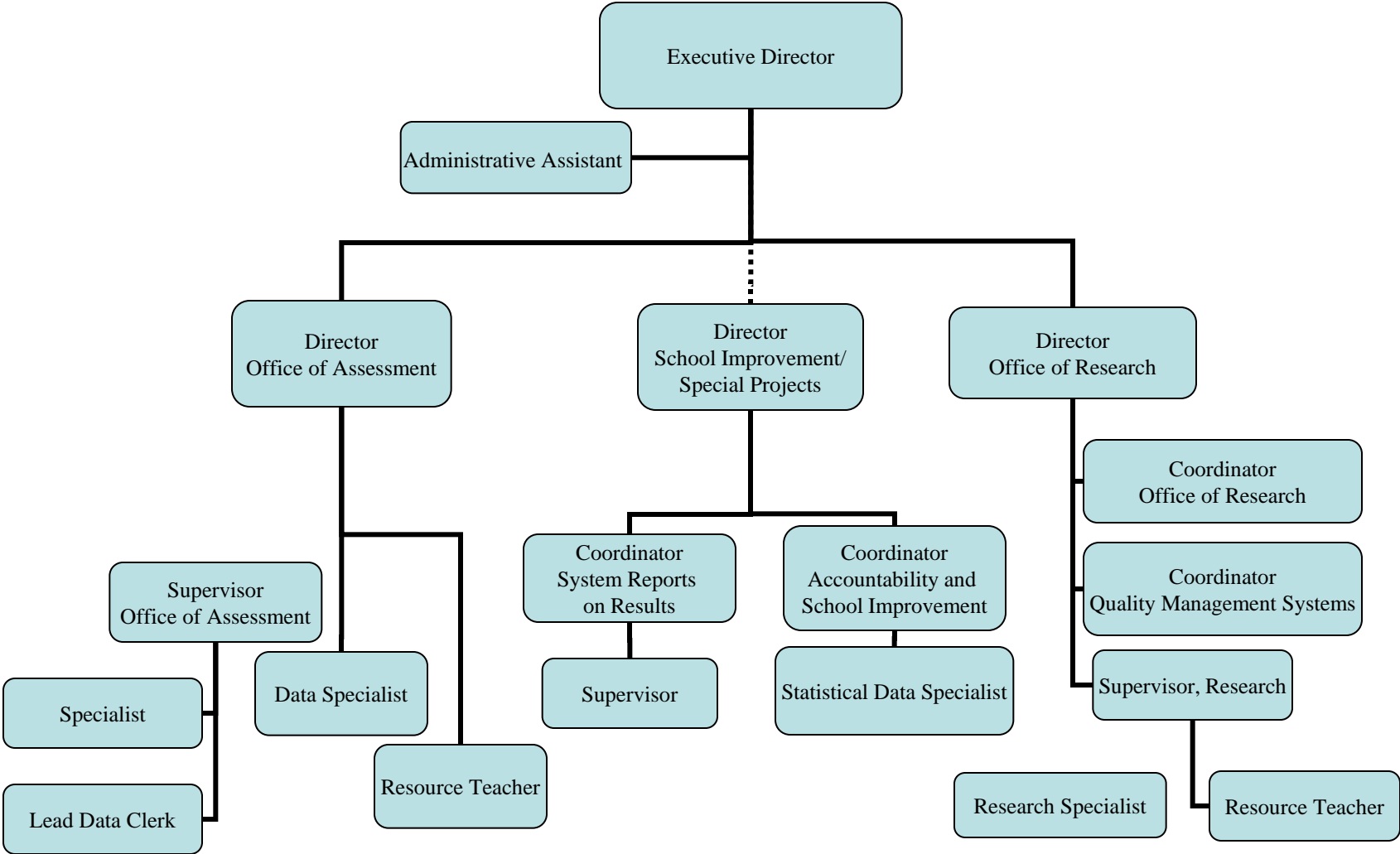
Table of Contents

Superintendent of Schools	Page 1
Department of Research, Accountability, and Assessment	Page 2
Student Support Services.....	Page 3
Associate Superintendent of Schools, Curriculum and Instruction	Page 4
Assistant Superintendents	Page 5
Division of Curriculum and Instruction.....	Page 6
Executive Director, STEM.....	Page 7
Executive Director, Liberal Arts.....	Page 8
Special Programs, PreK-12 / Equity and Assurance.....	Page 9
Department of Professional Development	Page 10
Division of Business Services	Page 11
Department of Fiscal Services	Page 12
Department of Planning and Support Operations	Page 13
Department of Human Resources	Page 14
Department of Physical Facilities.....	Page 15
Department of Technology	Page 16
The Baltimore County Public Schools	Page 17
Office of Internal Audit.....	Page 18

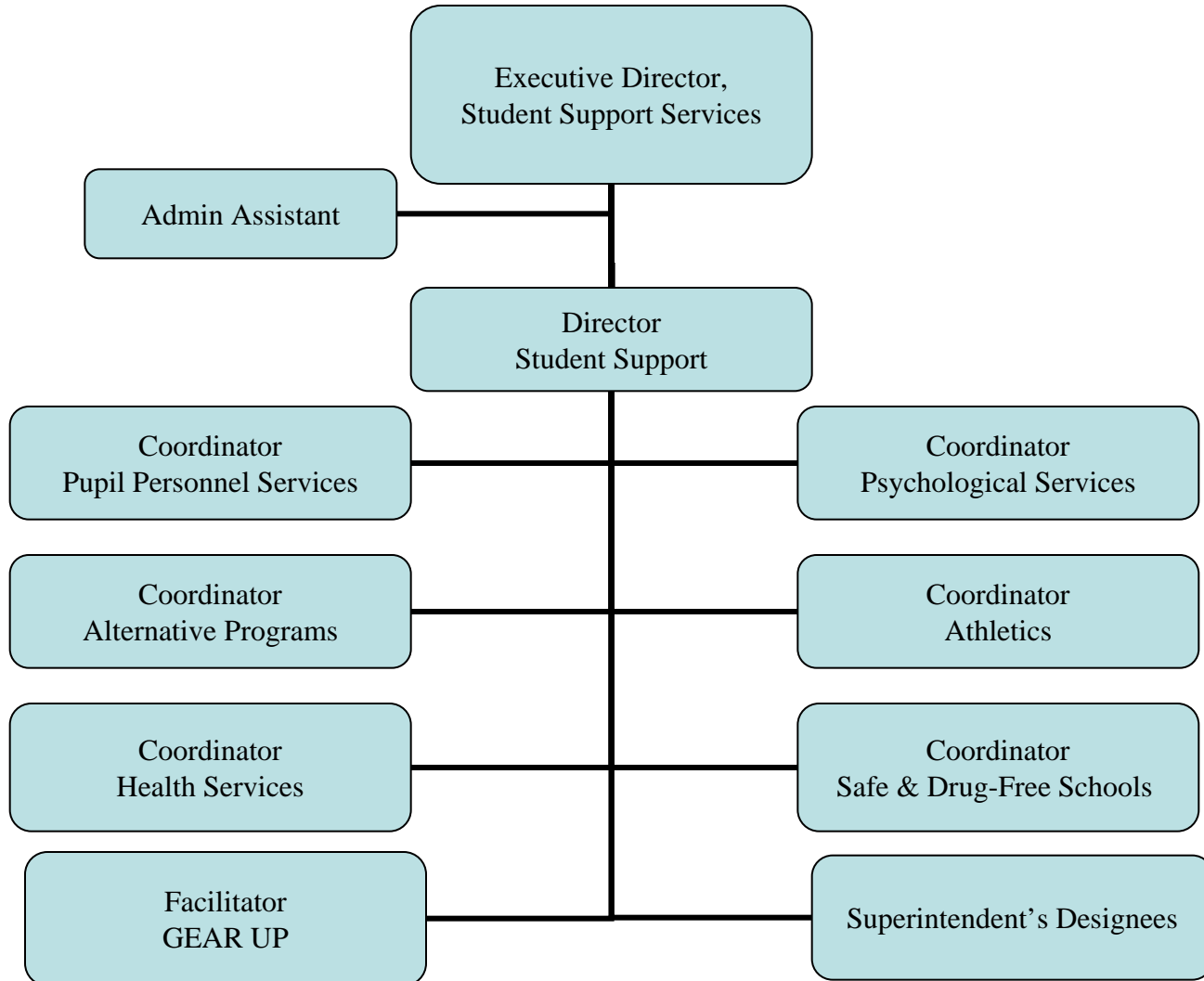
Superintendent of Schools



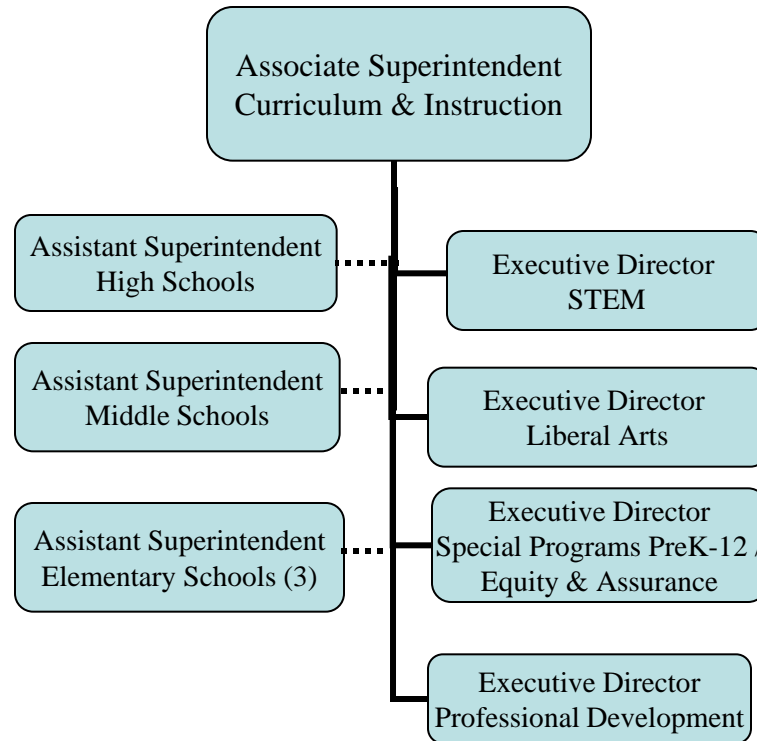
Department of Research, Accountability, and Assessment



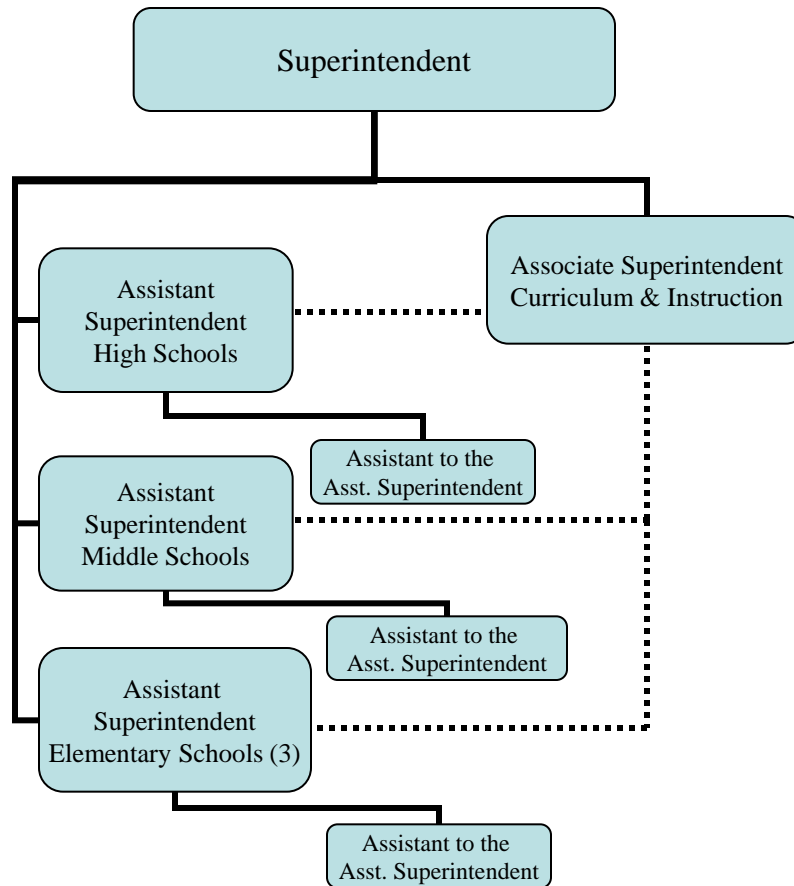
Department of Student Support Services



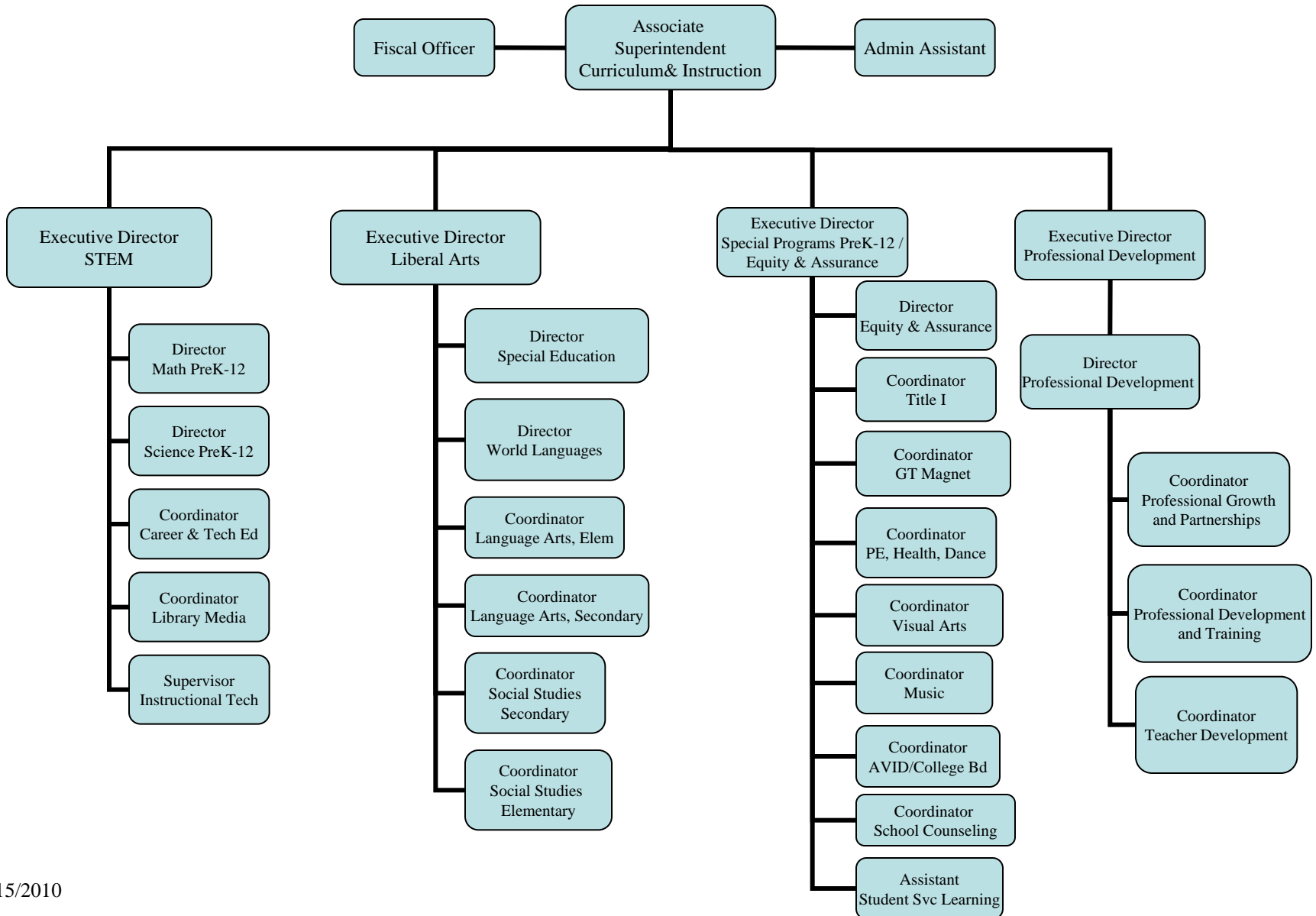
Associate Superintendent of Schools Curriculum and Instruction



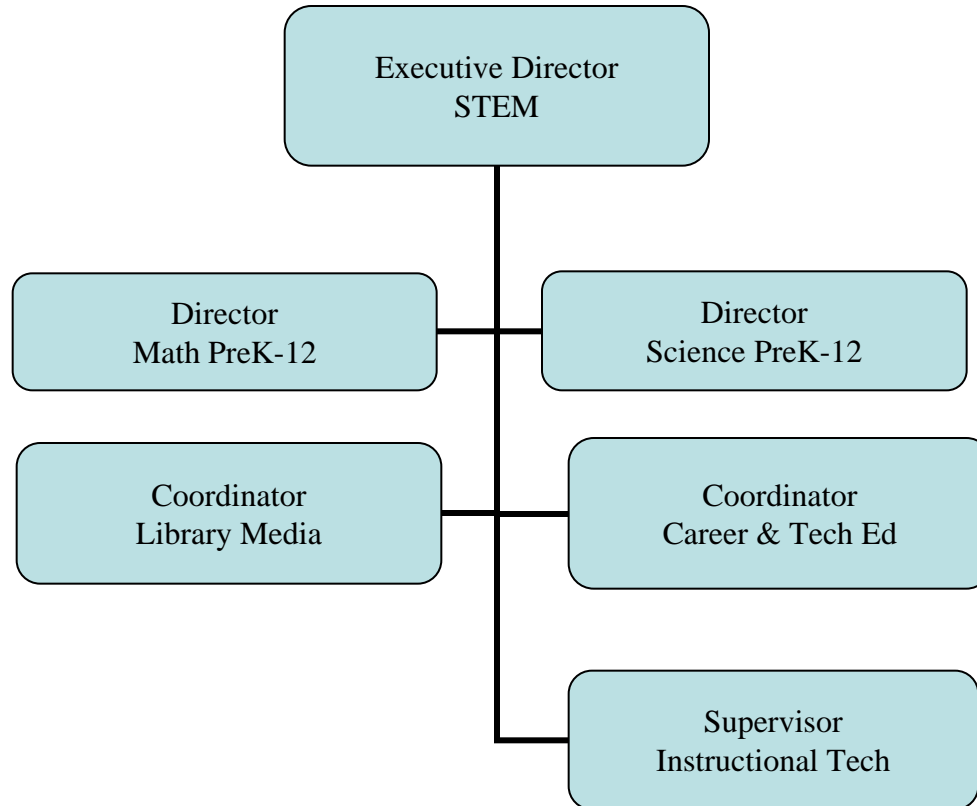
Superintendent of Schools Assistant Superintendents



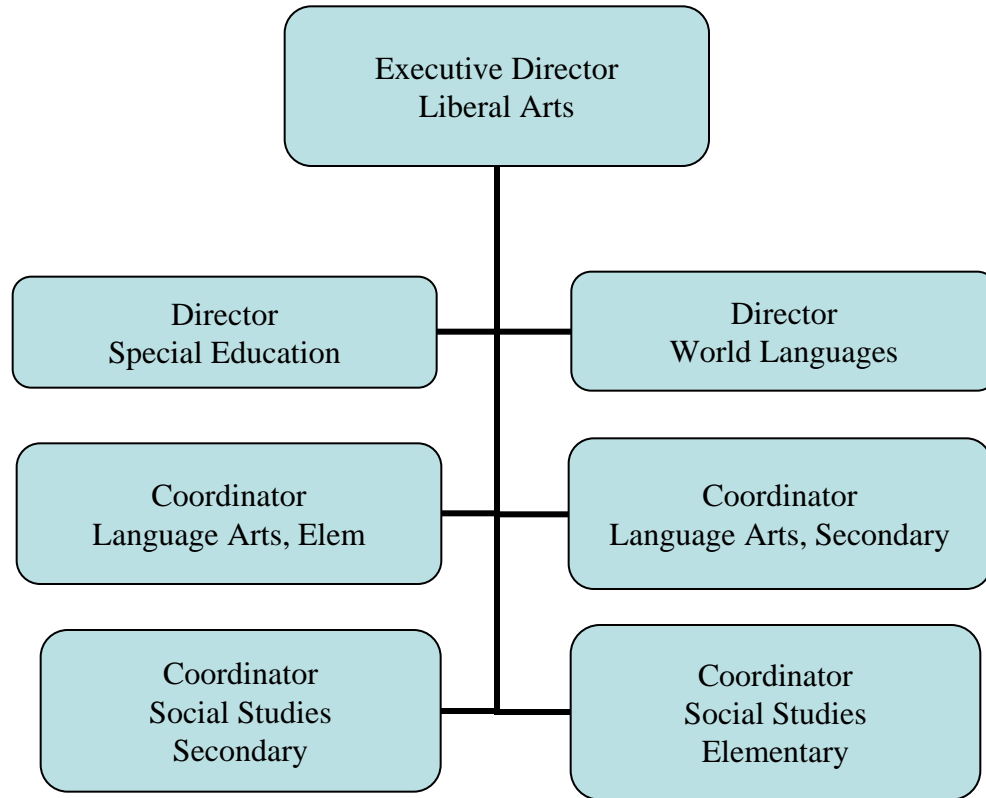
Division of Curriculum and Instruction Services



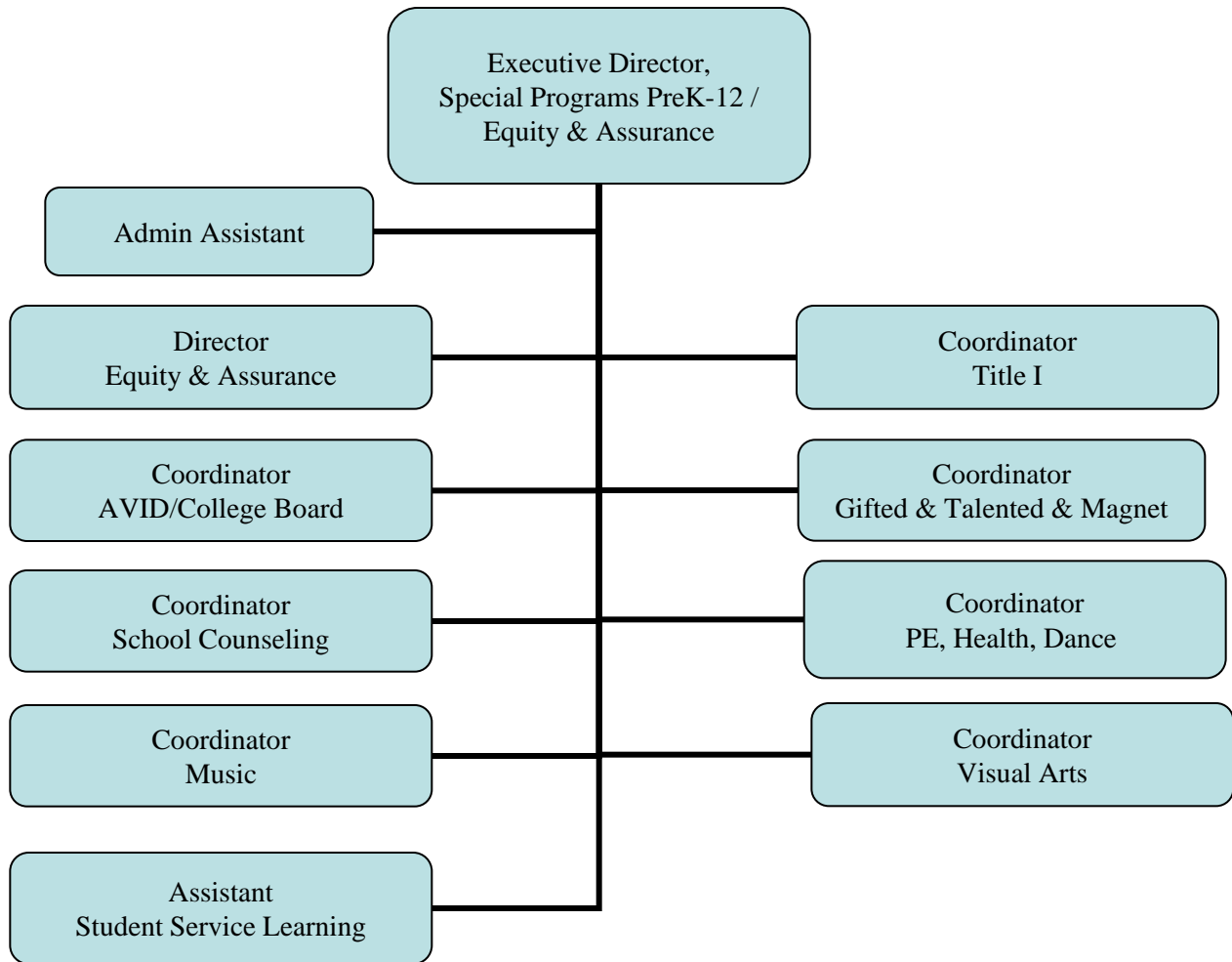
Executive Director - STEM



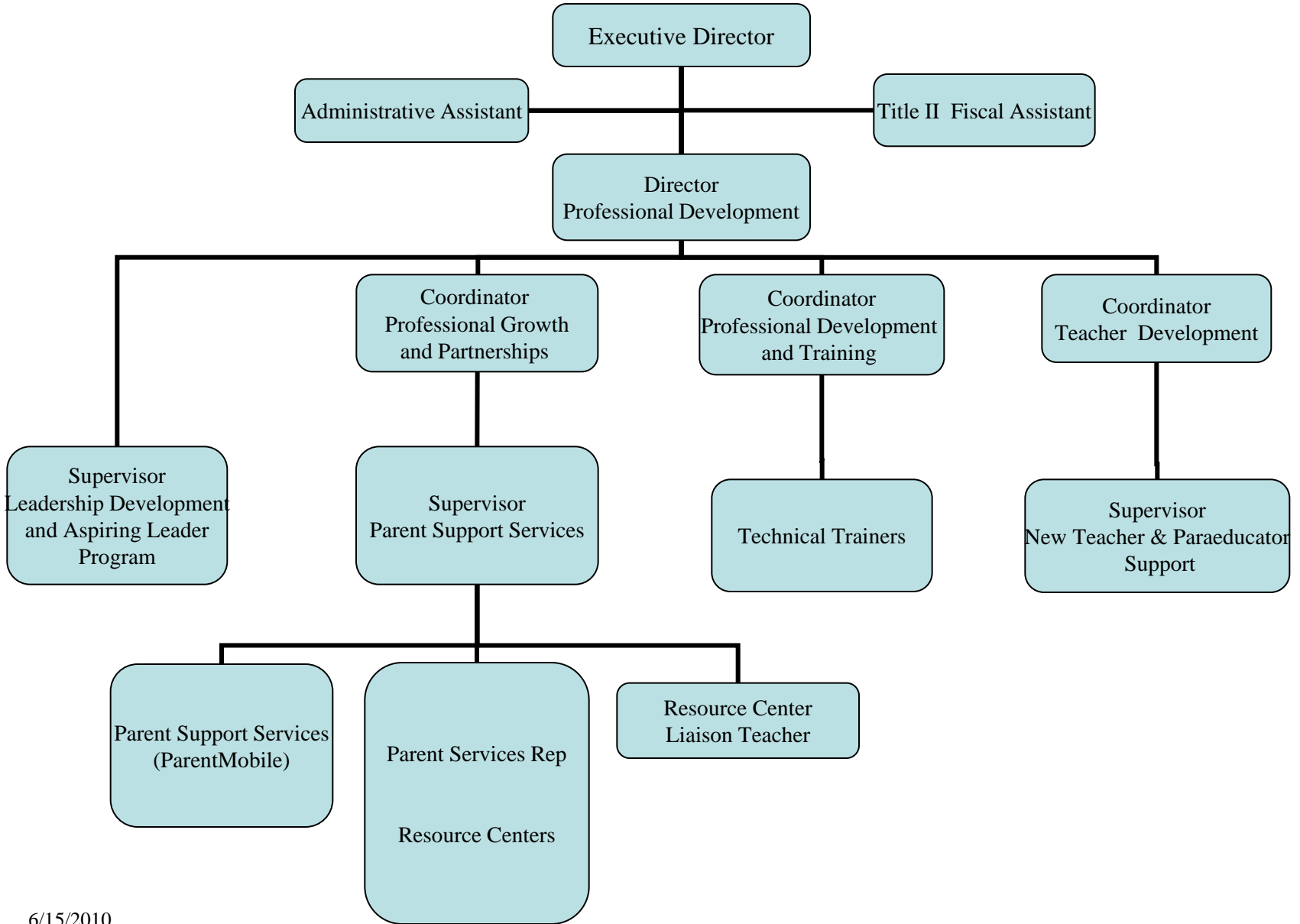
Executive Director – Liberal Arts



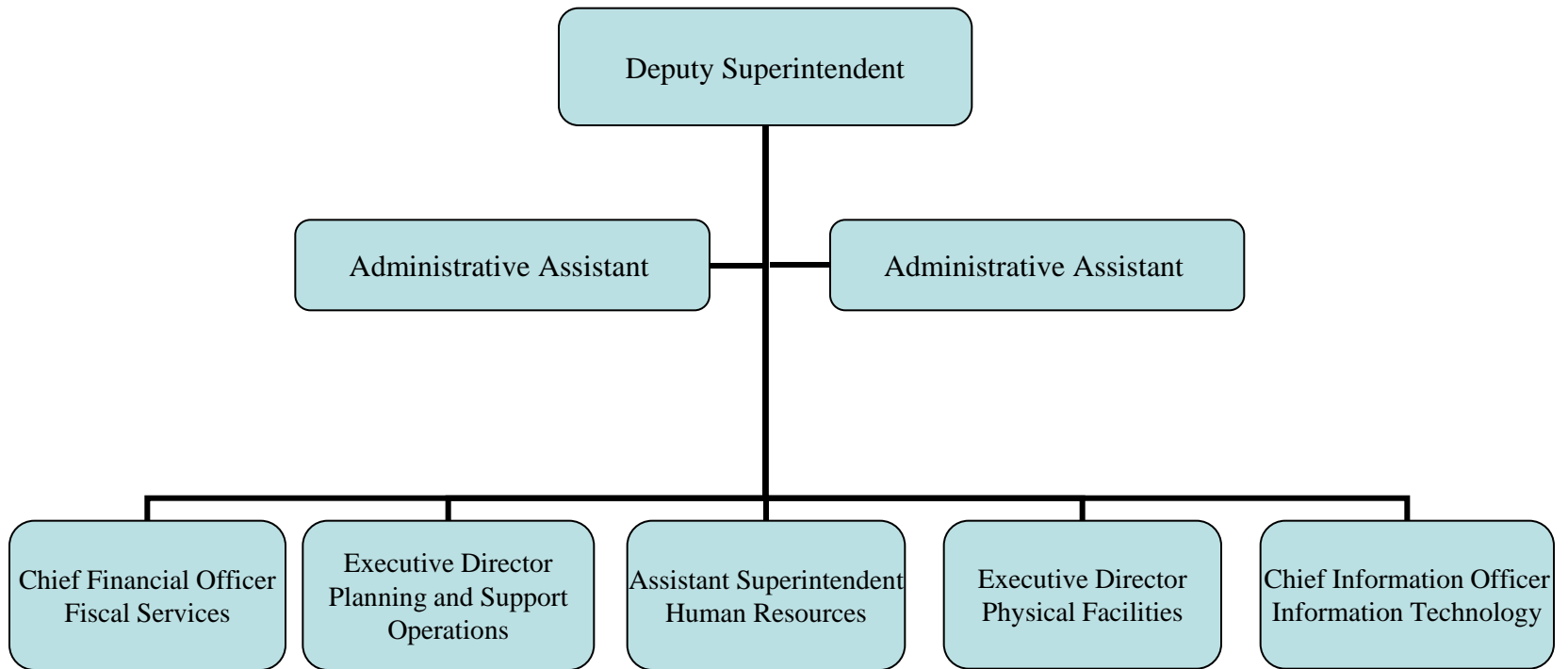
Department of Special Programs PreK-12 / Equity & Assurance



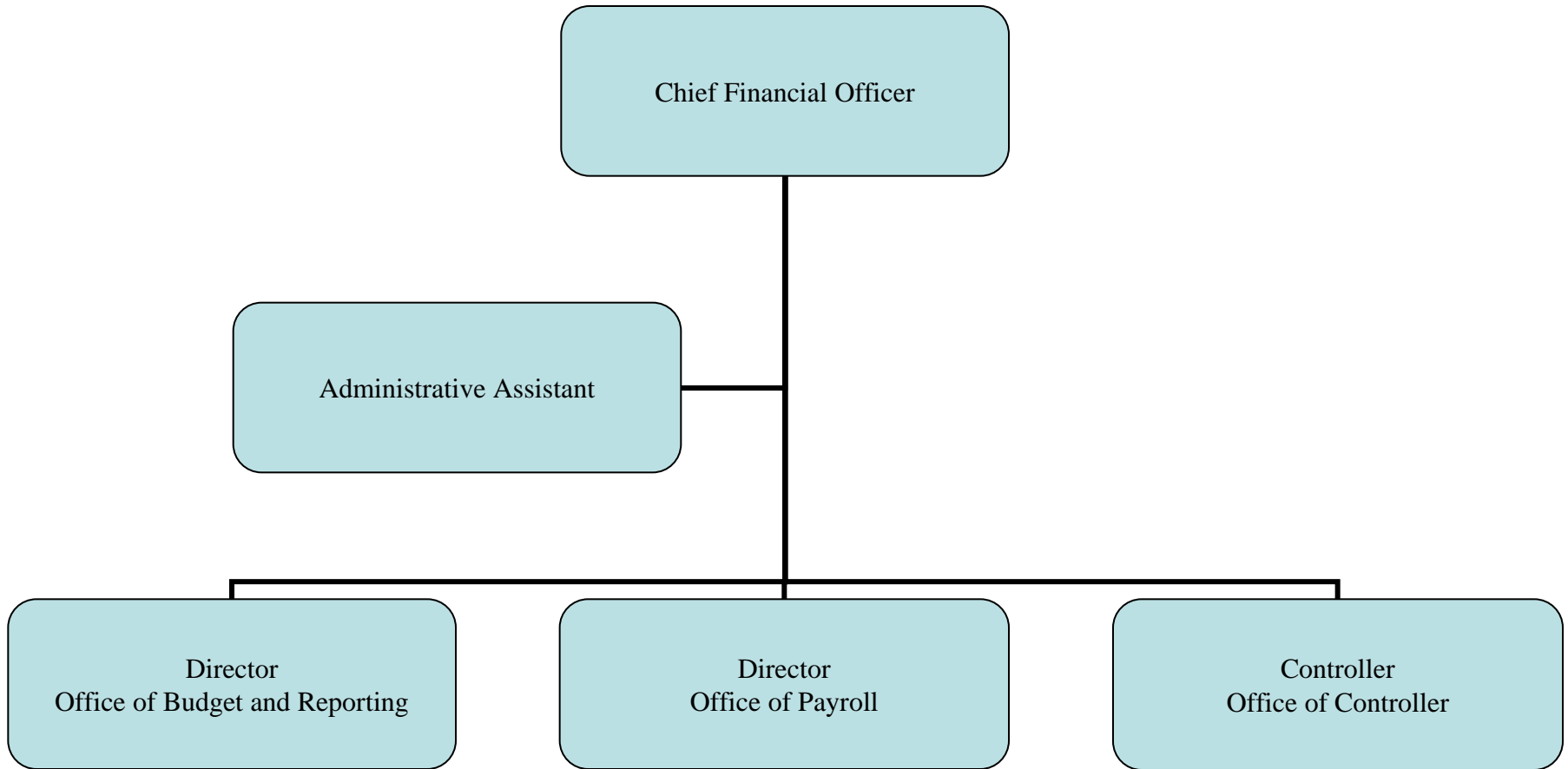
Department of Professional Development



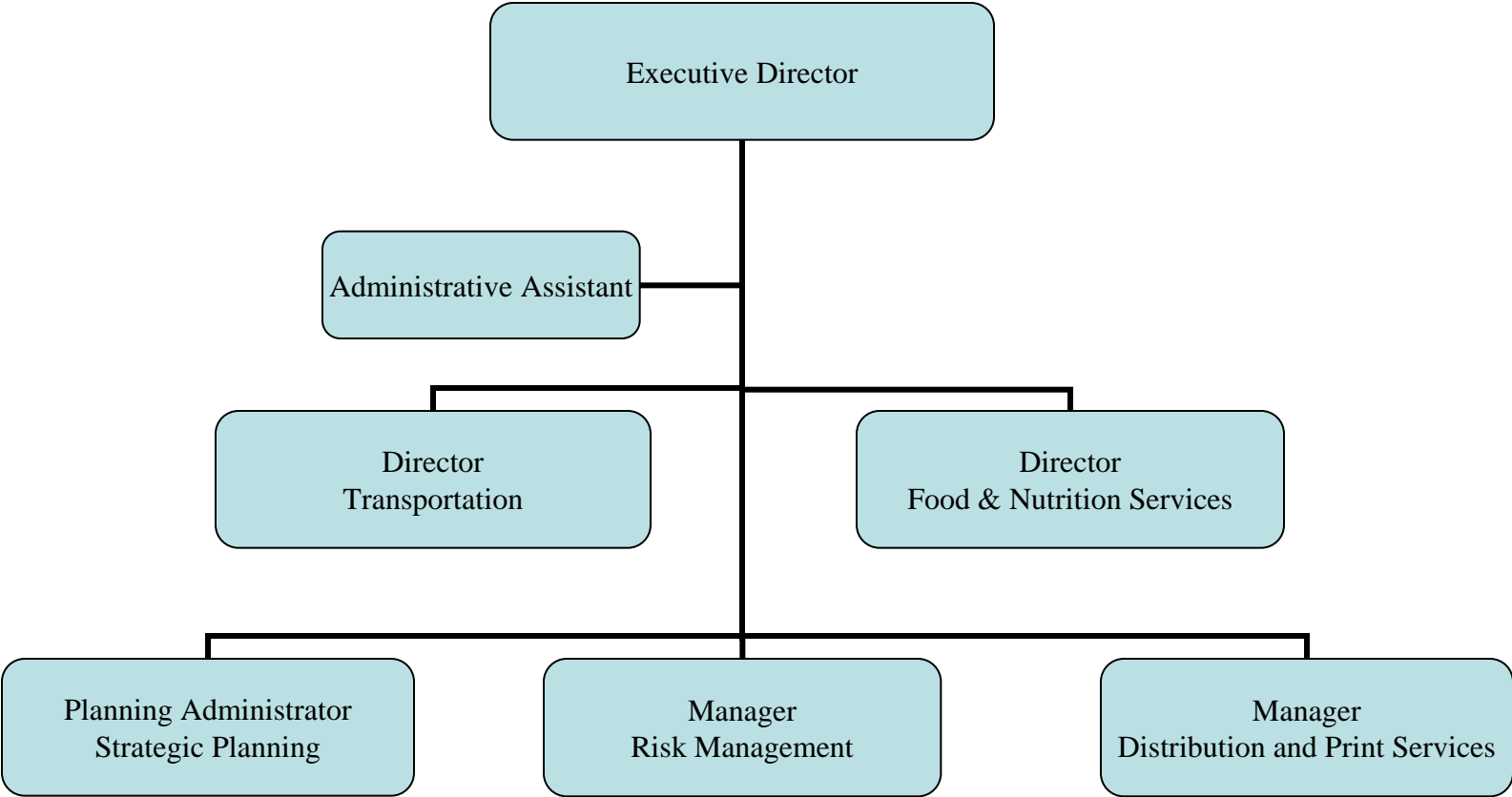
Division of Business Services



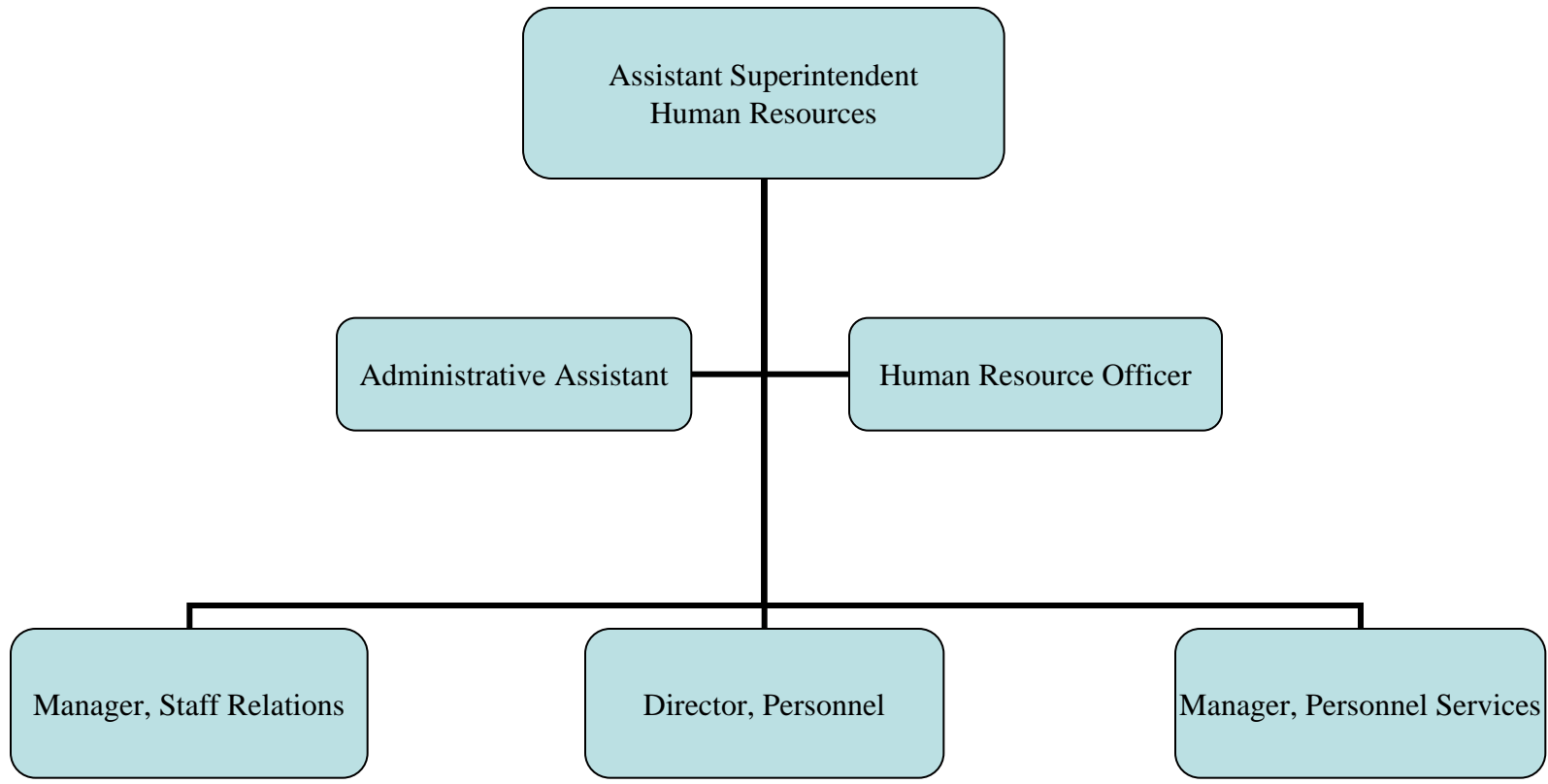
Department of Fiscal Services



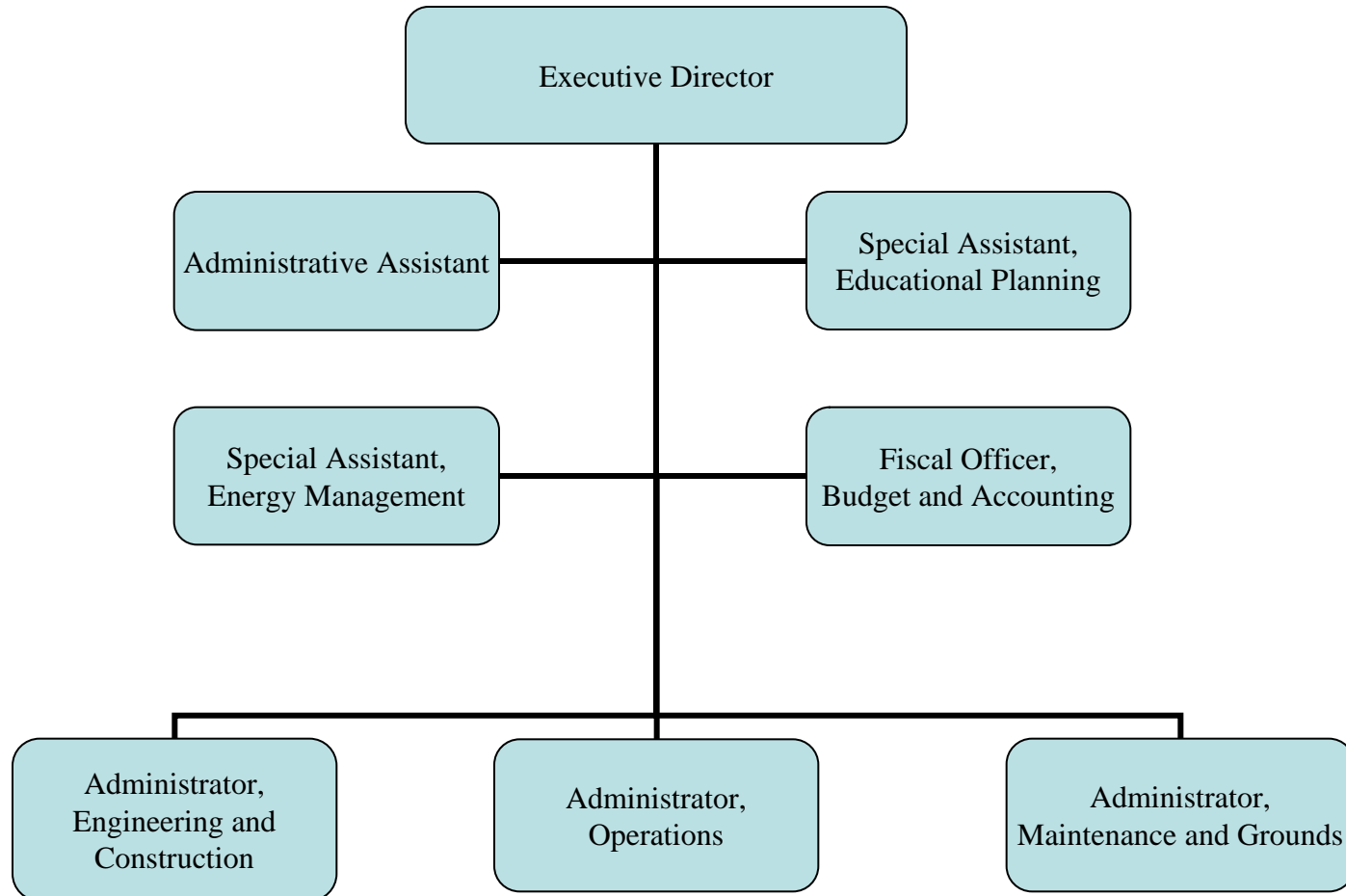
Department of Planning and Support Operations



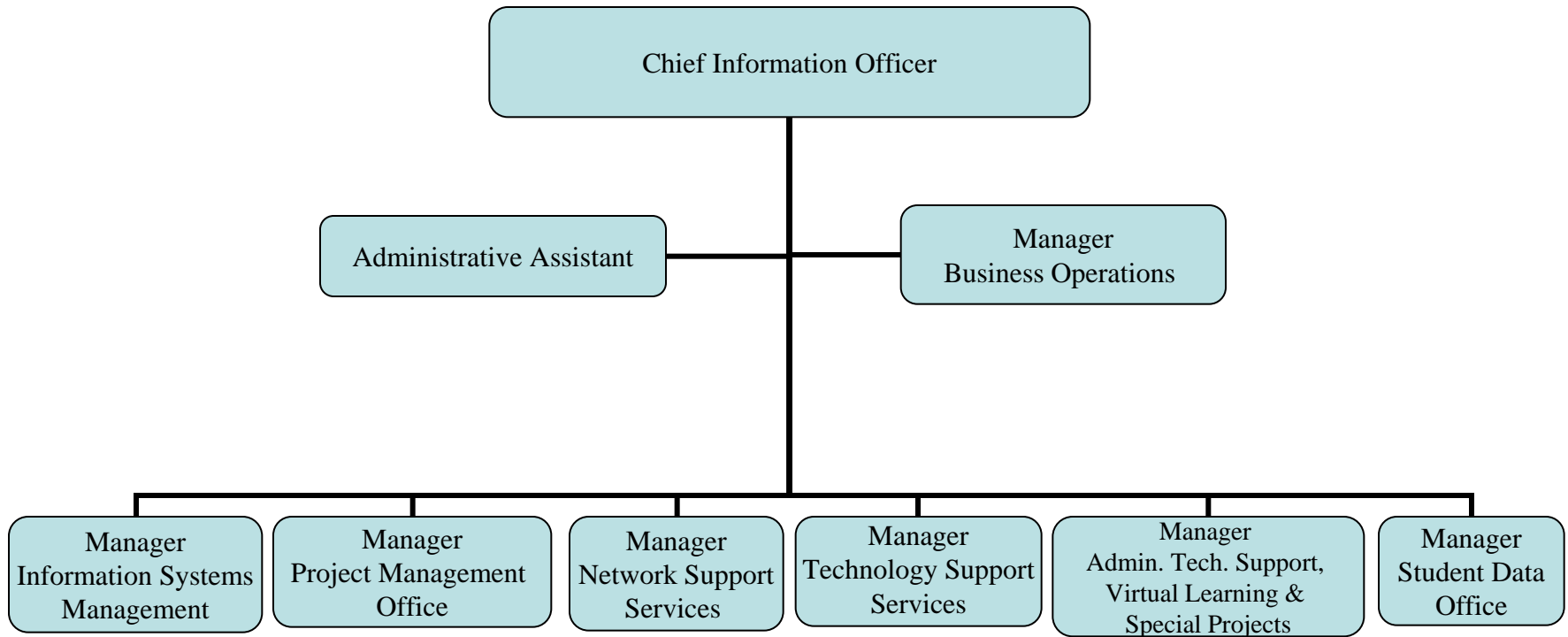
Department of Human Resources



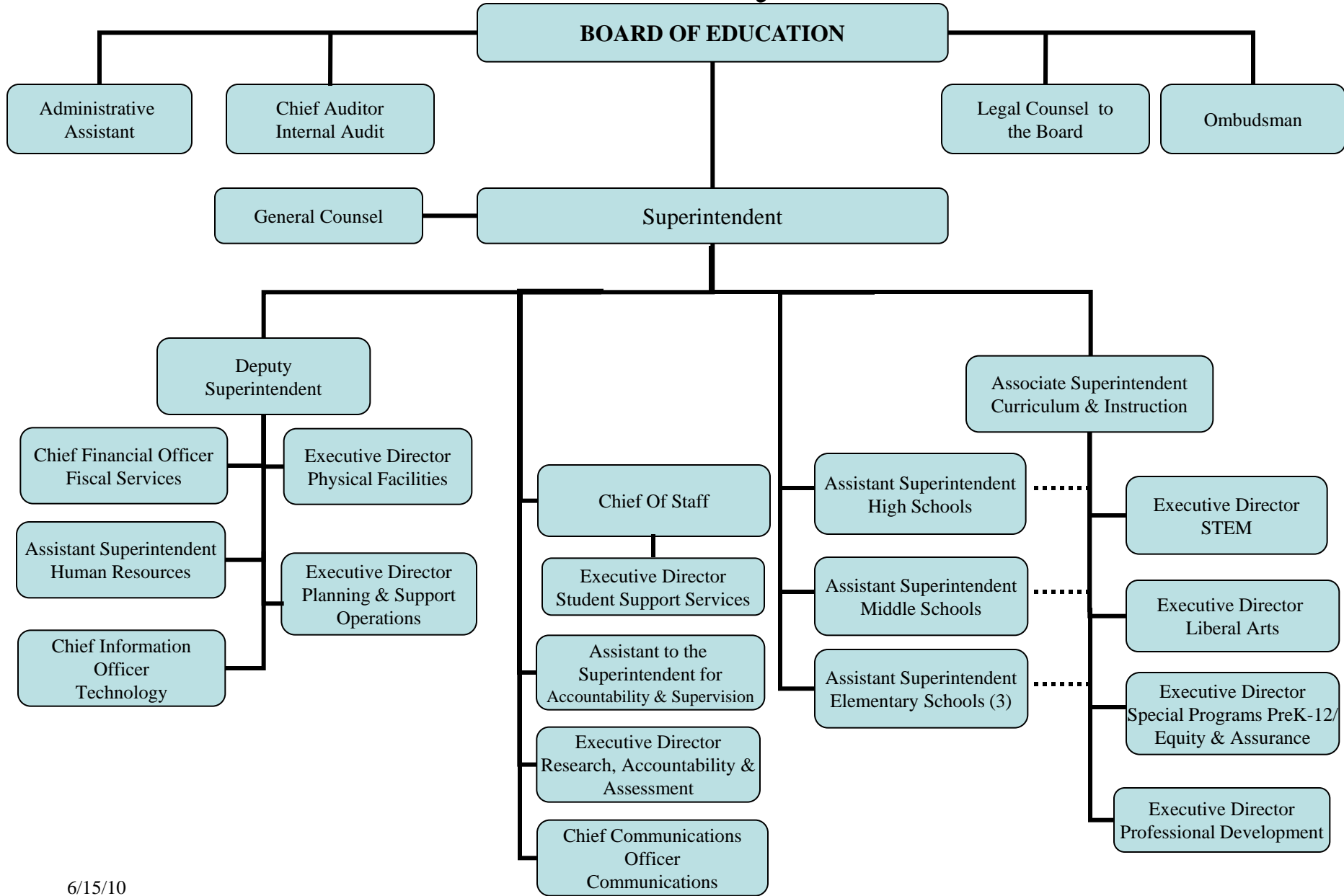
Department of Physical Facilities



Department of Technology



The Baltimore County Public Schools



The Baltimore County Public Schools Office of Internal Audit

