

BALTIMORE COUNTY PUBLIC SCHOOLS

DATE: August 21, 2012

TO: **BOARD OF EDUCATION – CLOSED SESSION**

FROM: S. Dallas Dance, Ph.D., Superintendent

SUBJECT: **CONSIDERATION OF THE REVISED 2012-2013
ORGANIZATIONAL STRUCTURE FOR BALTIMORE COUNTY
PUBLIC SCHOOLS**

ORIGINATOR: S. Dallas Dance, Ph.D., Superintendent

**RESOURCE
PERSON(S):** Ann Geisinger, Human Resource Officer

RECOMMENDATION

That the Board of Education review and approve the revised organizational charts for the 2012-2013 school year.

* * * * *

Attachment I – Organization Charts



ORGANIZATION CHARTS

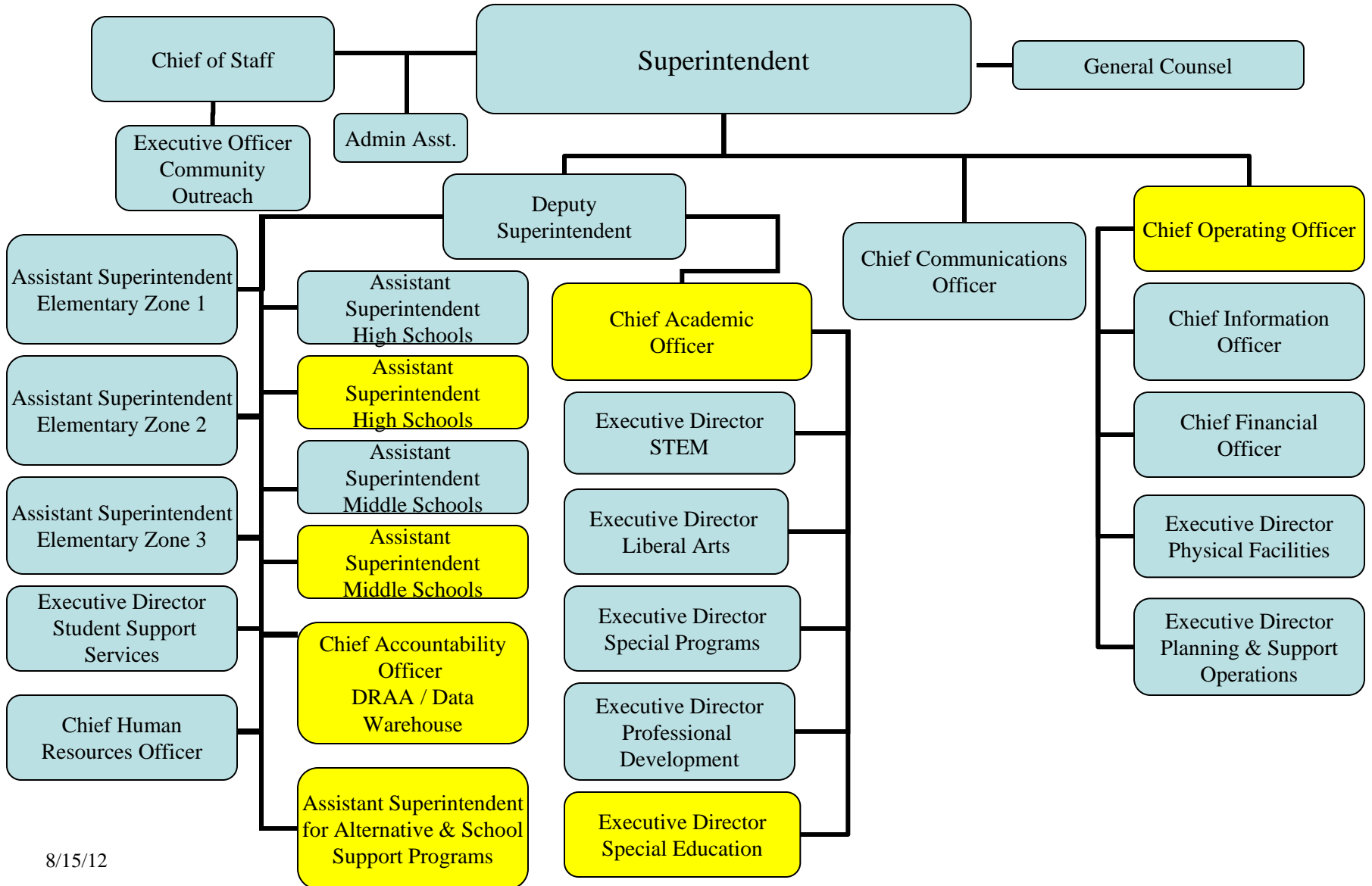
FY 2013

The Baltimore County Public Schools Organization Charts

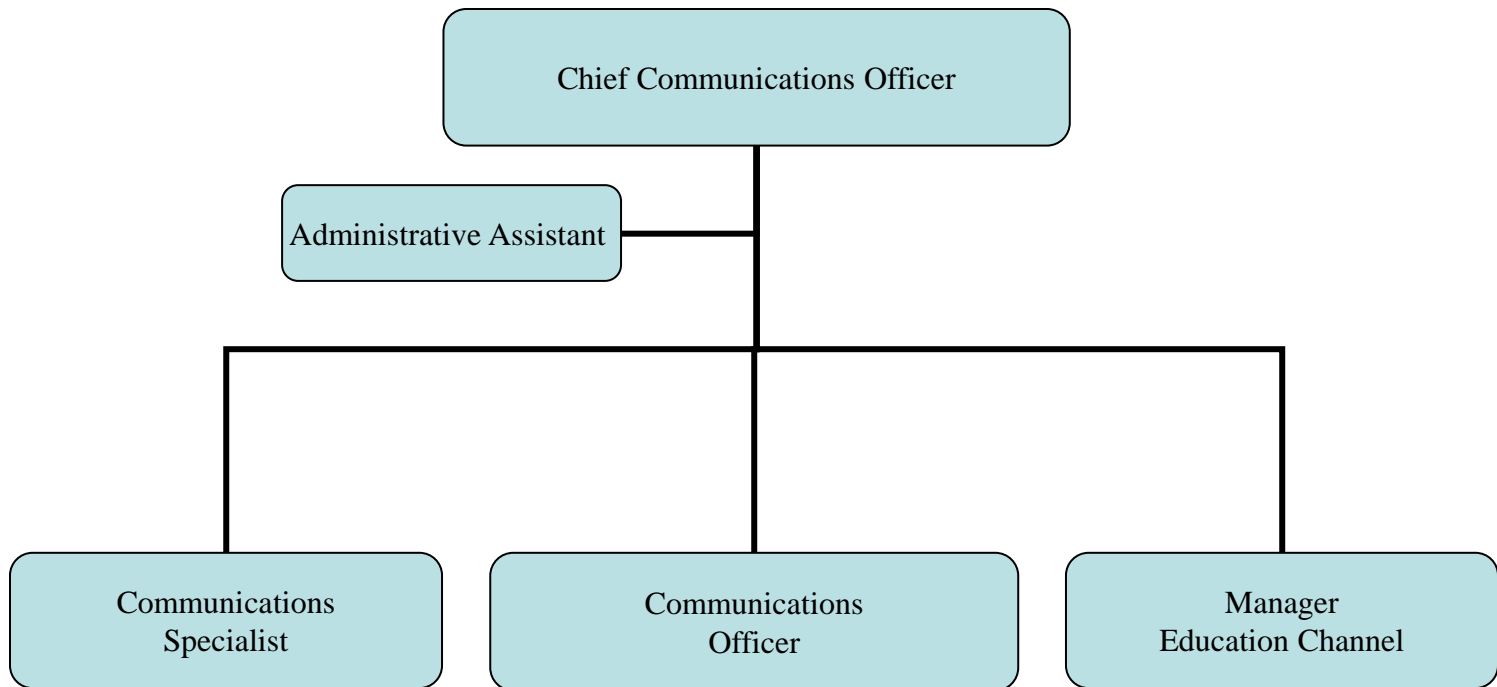
Table of Contents

Superintendent of Schools	Page 2
Office of Communications.....	Page 3
Division of Business Services	Page 4
Department of Fiscal Services	Page 5
Department of Planning and Support Operations	Page 6
Department of Physical Facilities.....	Page 7
Department of Technology	Page 8
Deputy Superintendent	Page 9
Department of Research, Accountability, and Assessment /Data Warehouse.....	Page 10
Department of Student Support Services... ..	Page 11
Department of Alternative Education and School Support.....	Page 12
Department of Human Resources	Page 13
Chief Academic Officer.....	Page 14
Division of Curriculum & Instruction	Page 15
Executive Director, STEM.....	Page 16
Executive Director, Liberal Arts.....	Page 17
Executive Director, Special Programs.....	Page 18
Executive Director, Special Education.....	Page 19
Executive Director, Professional Development	Page 20
The Baltimore County Public Schools	Page 21
Office of Internal Audit.....	Page 22

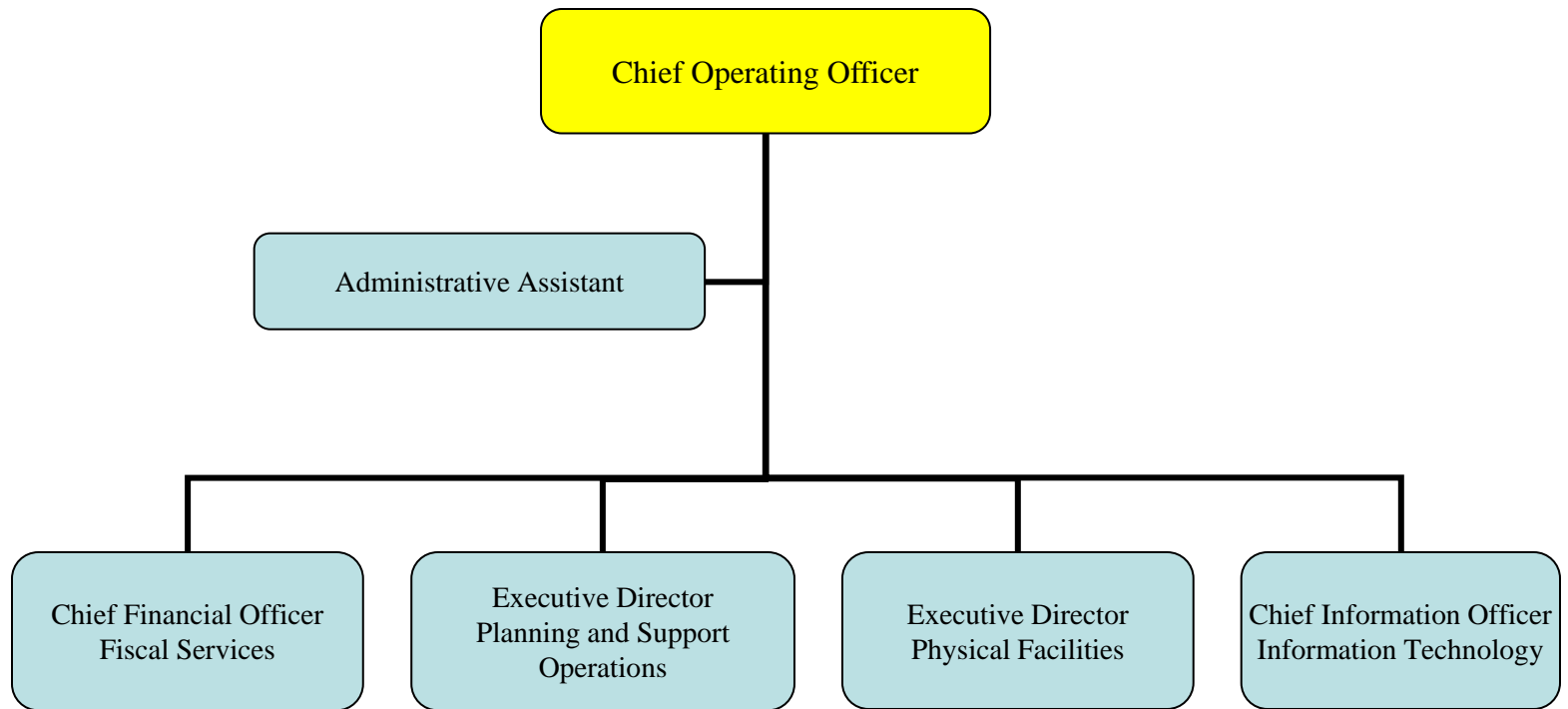
Superintendent of Schools



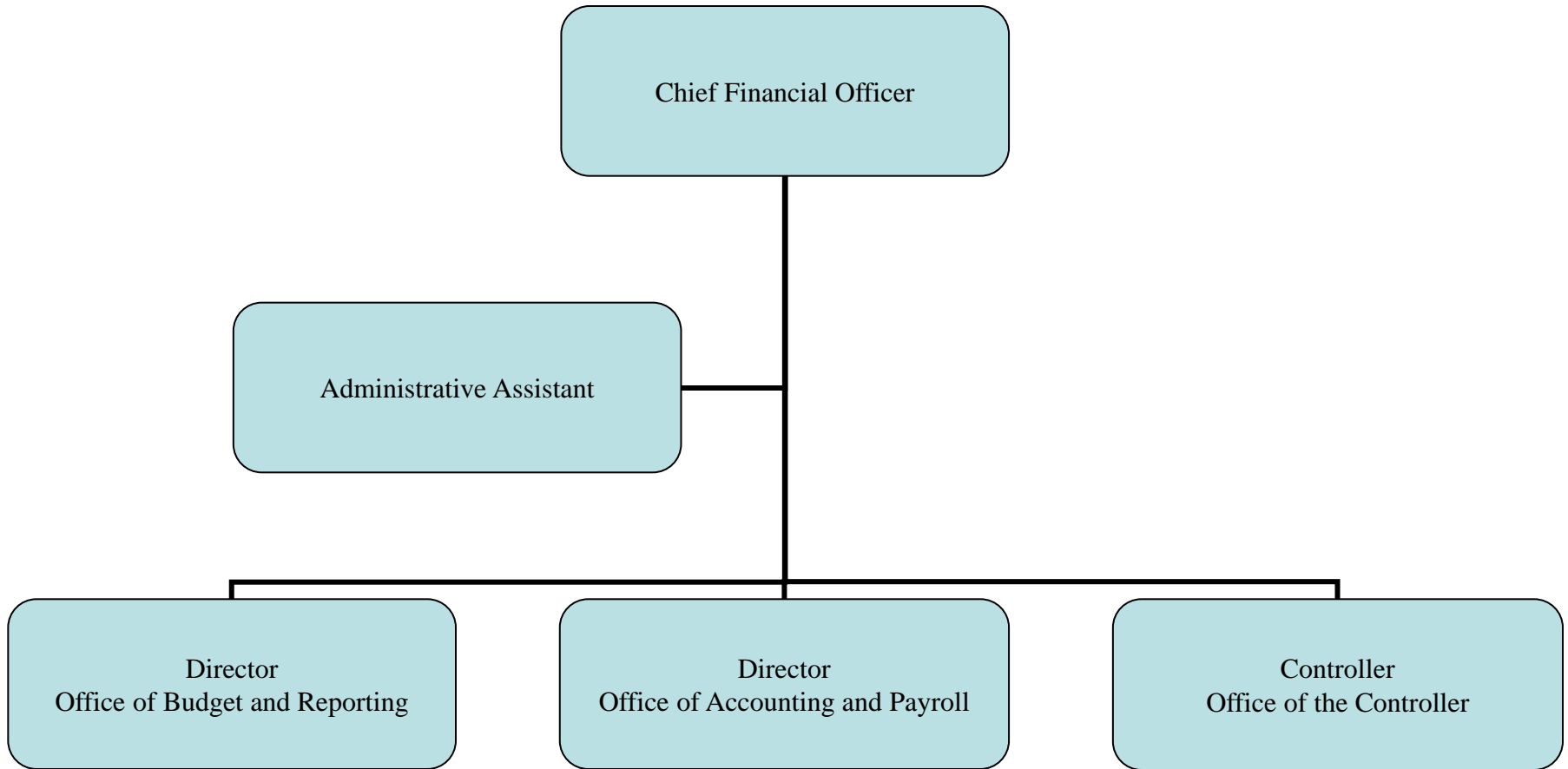
Office of Communications



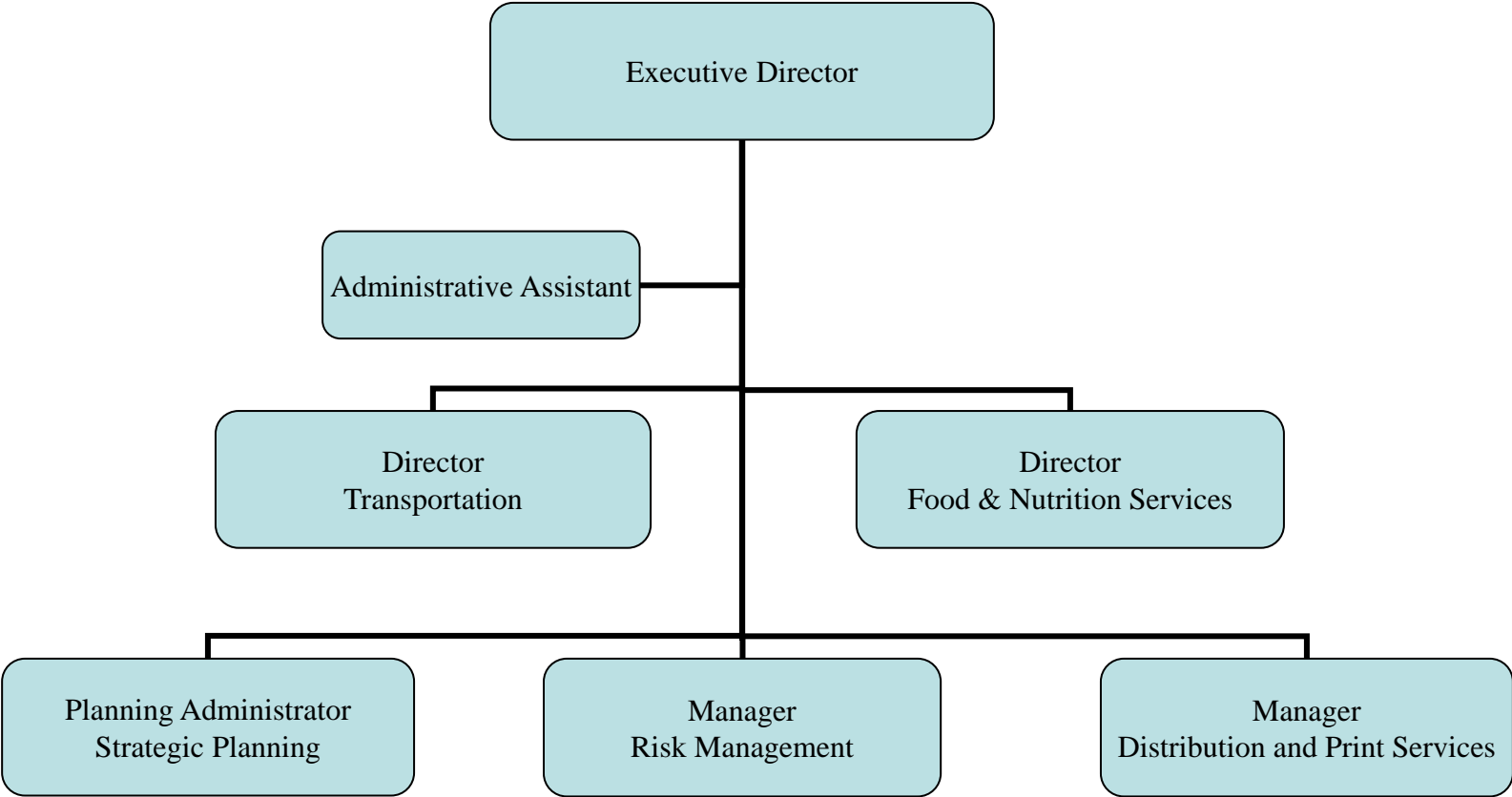
Division of Business Services



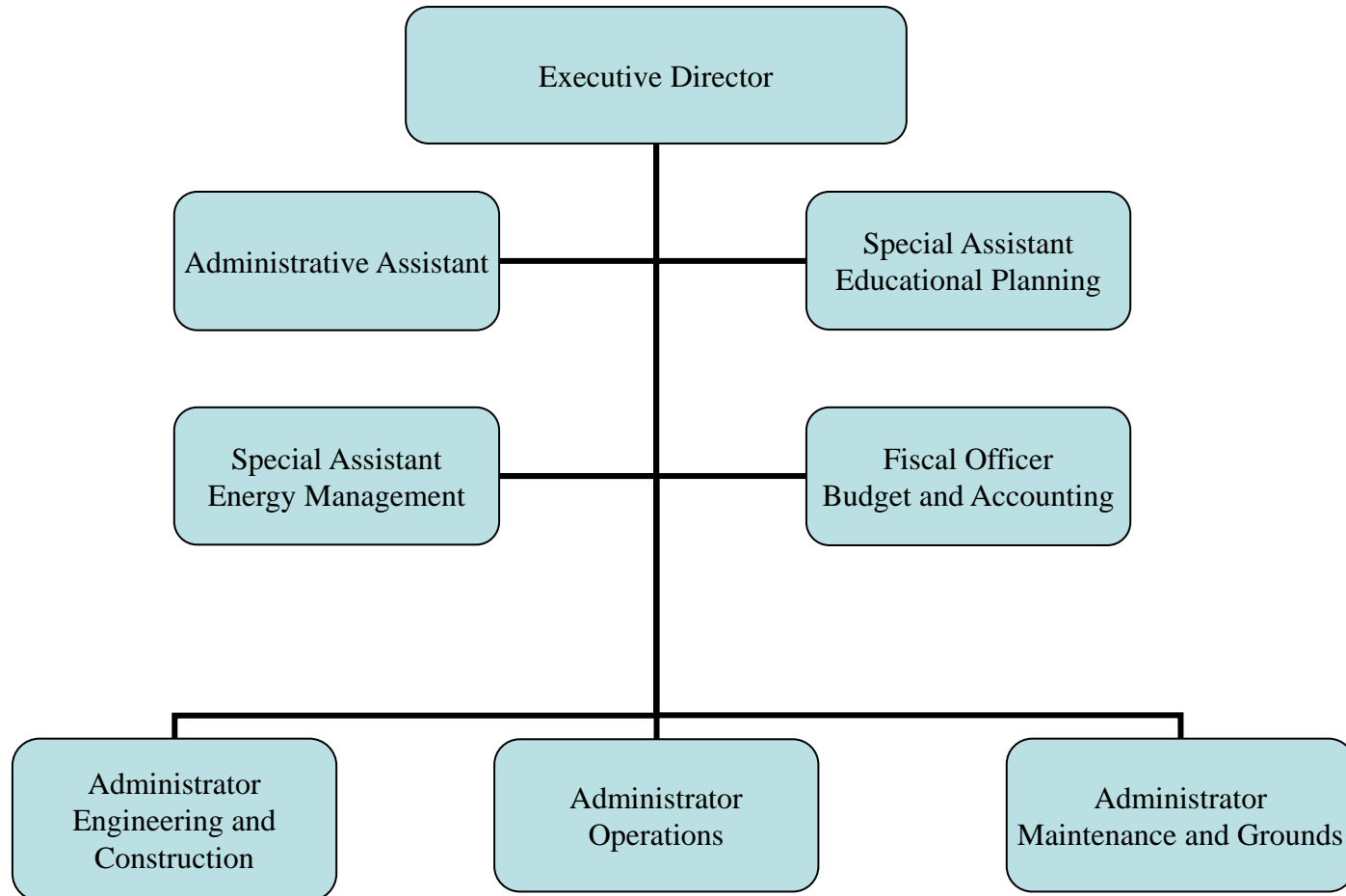
Department of Fiscal Services



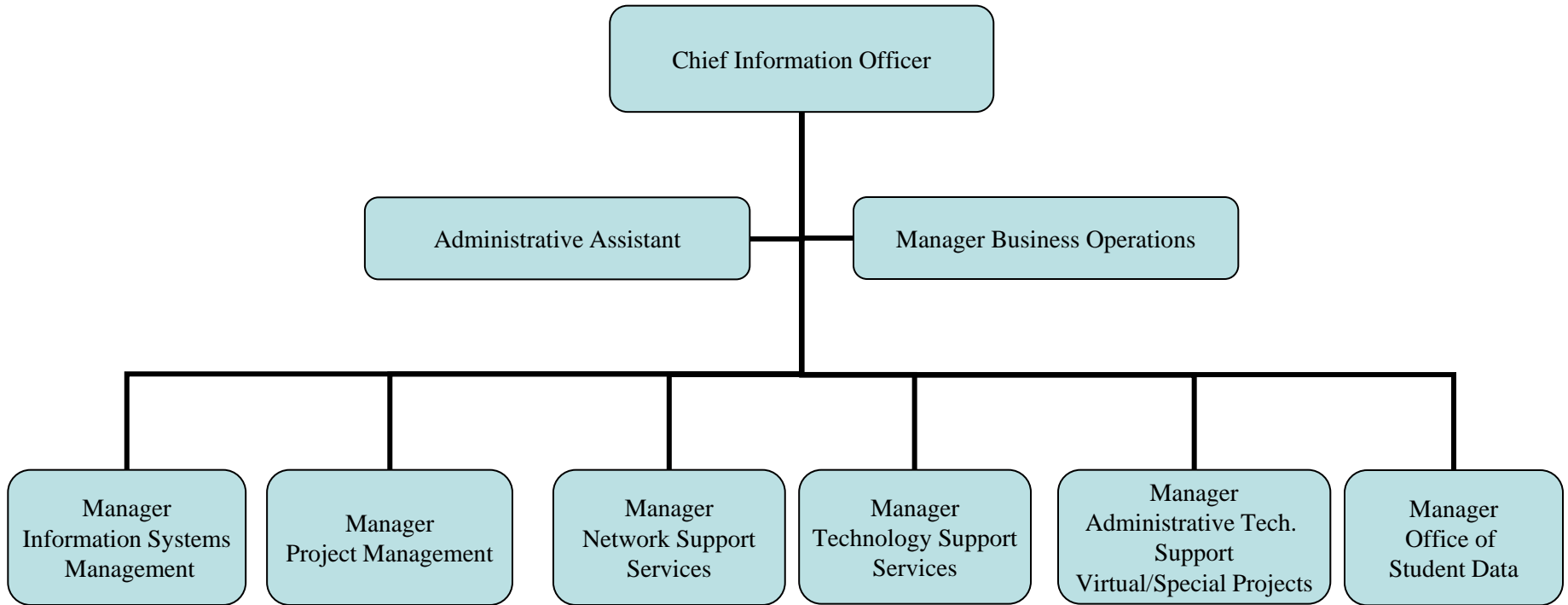
Department of Planning and Support Operations



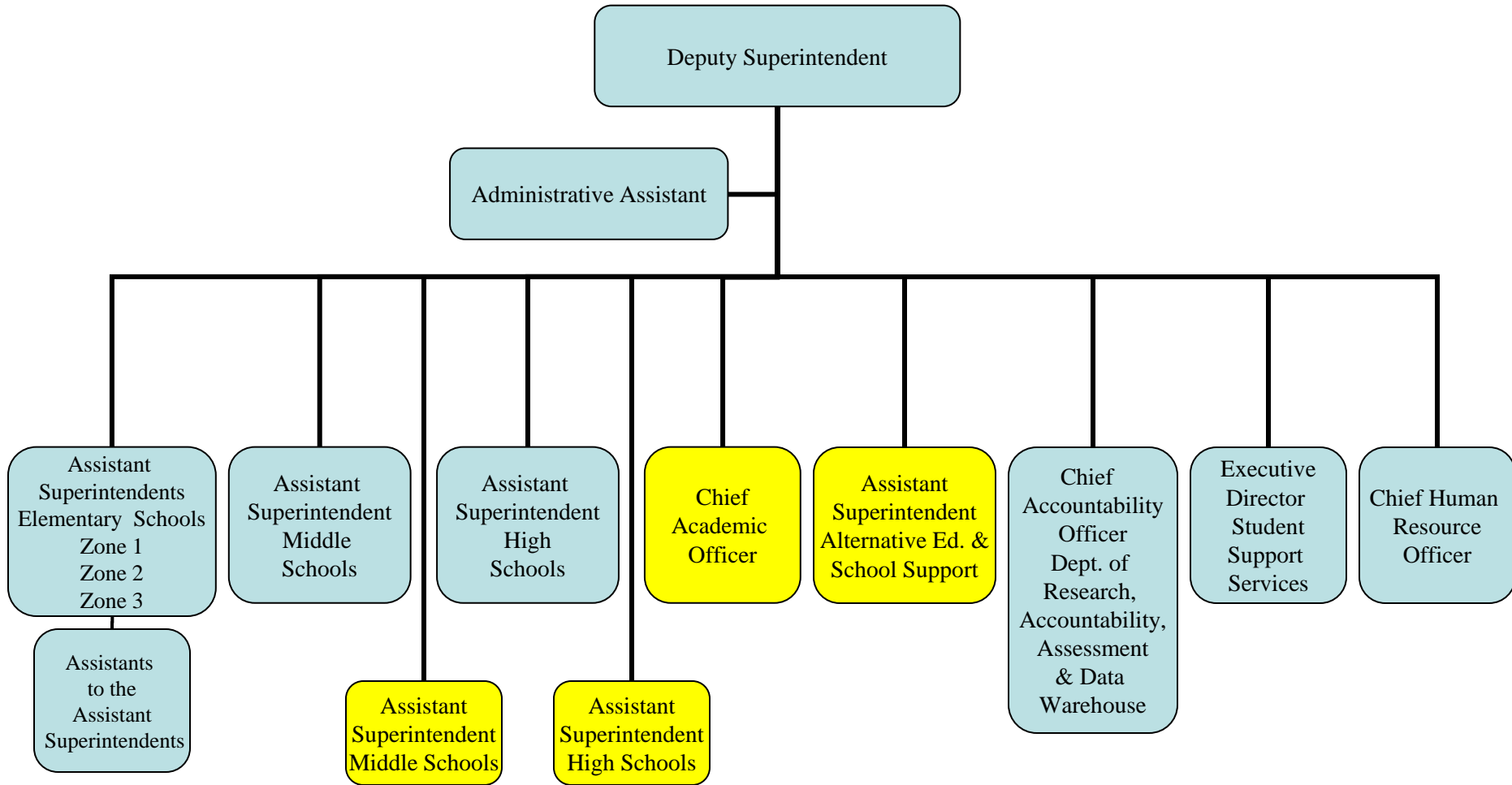
Department of Physical Facilities



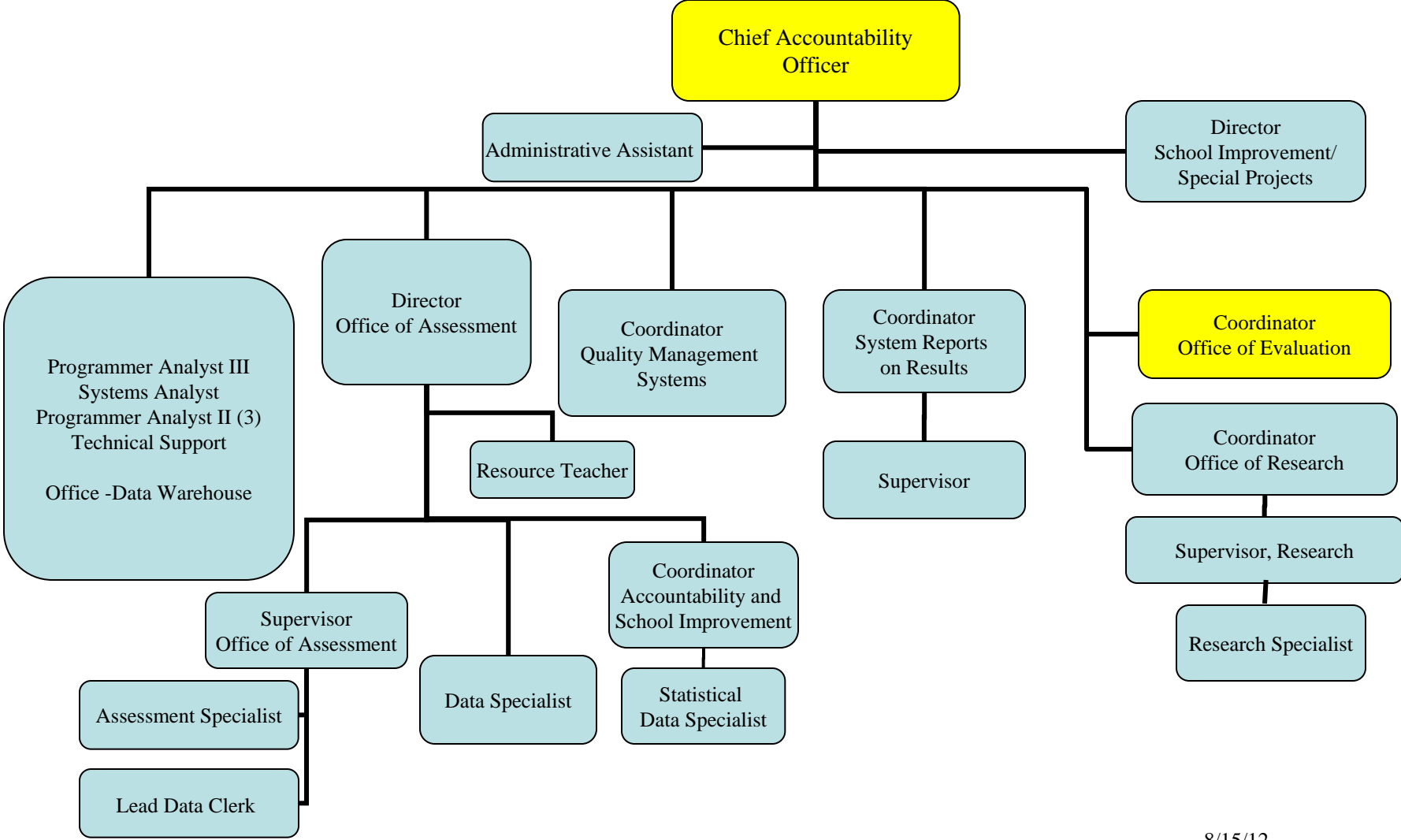
Department of Technology



Deputy Superintendent

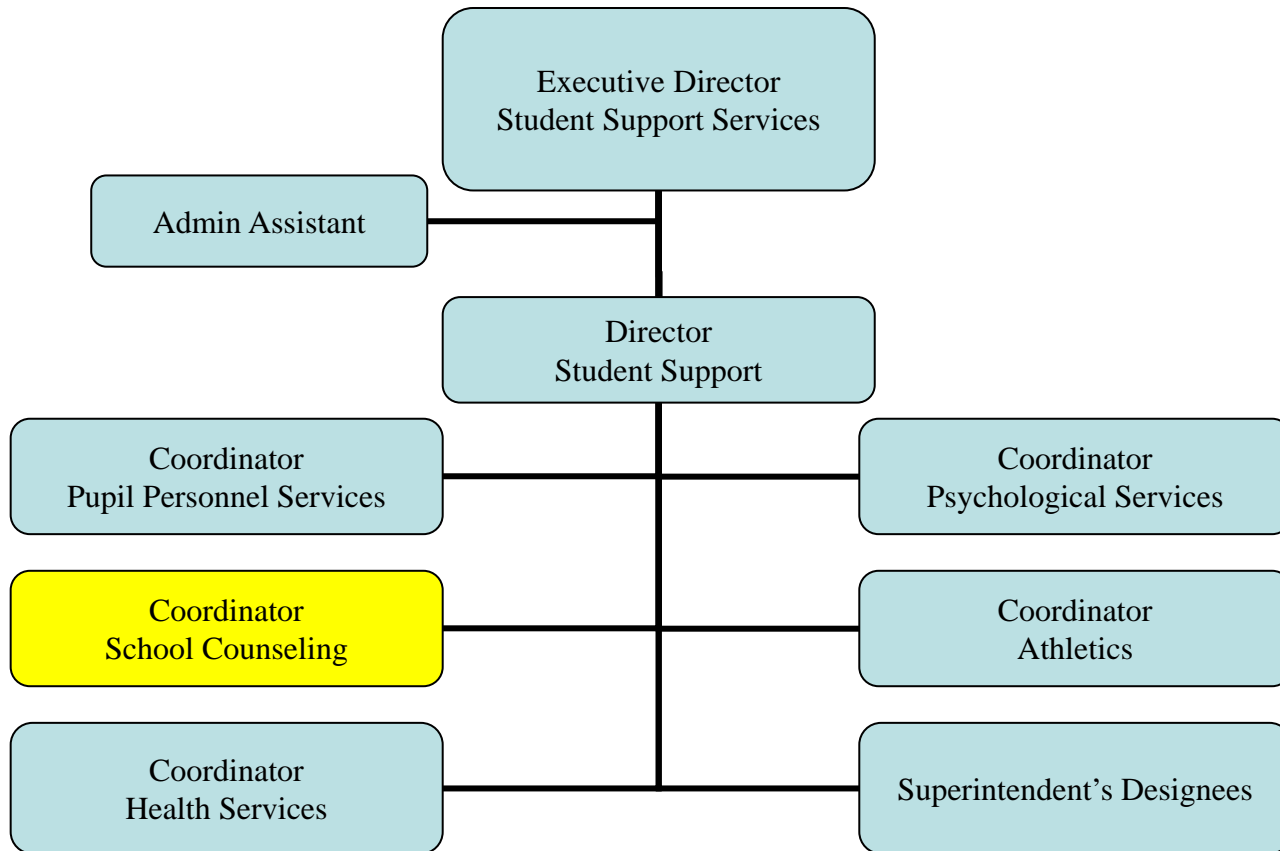


Department of Research, Accountability, and Assessment & Data Warehouse

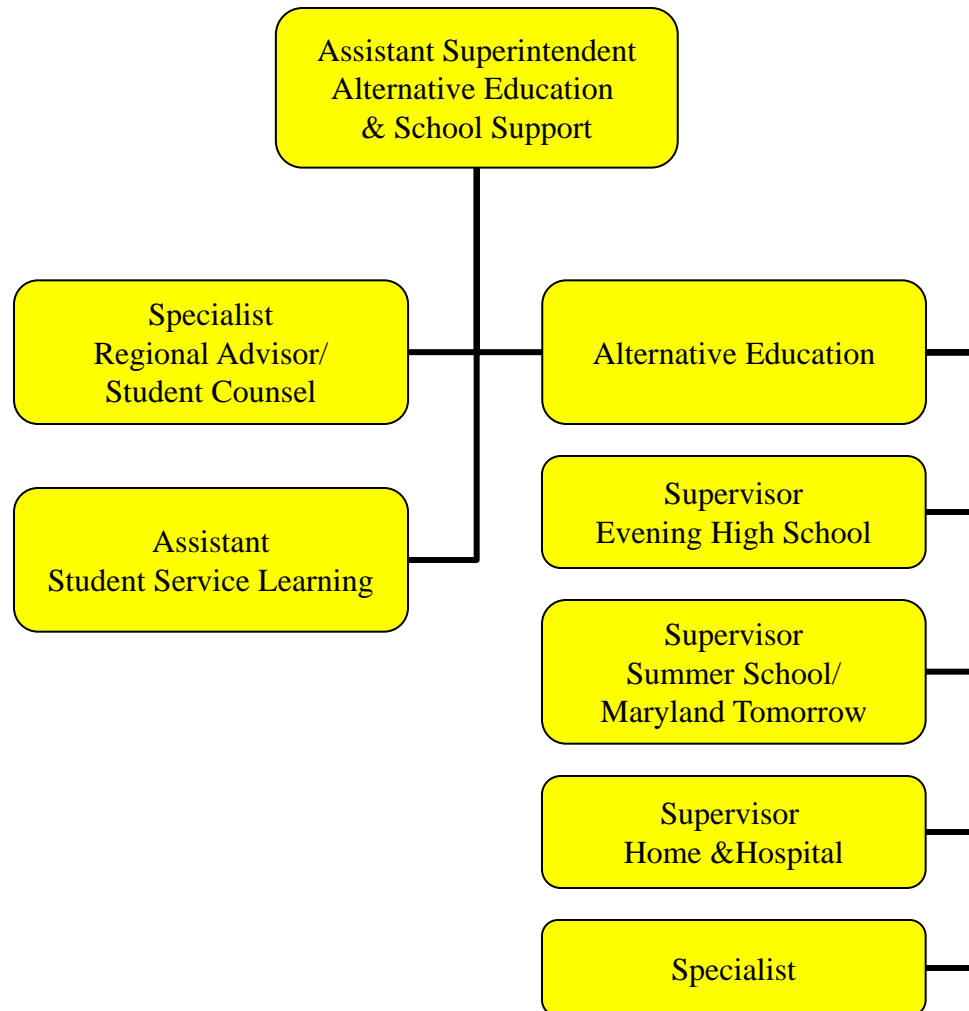


8/15/12

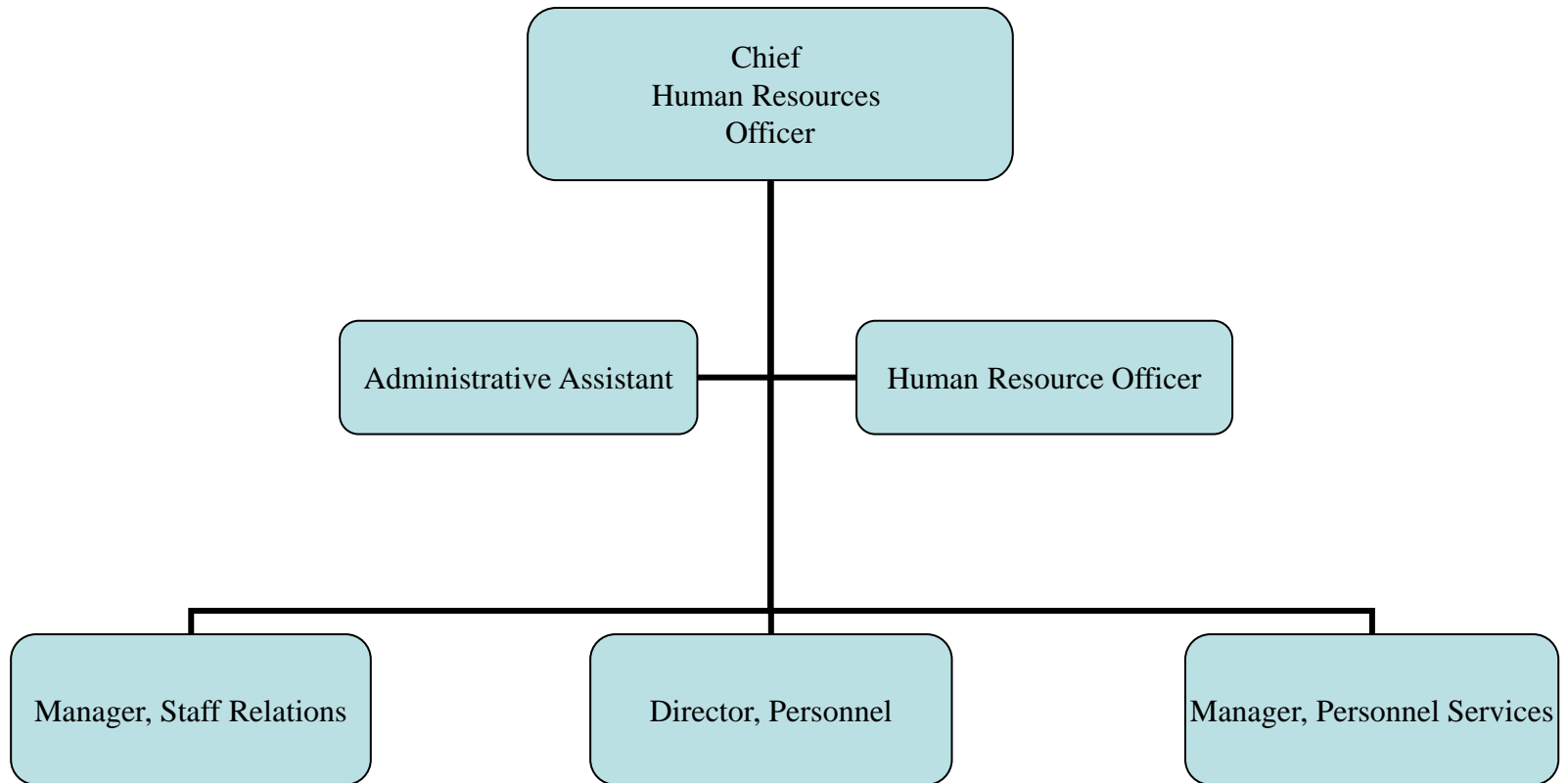
Department of Student Support Services



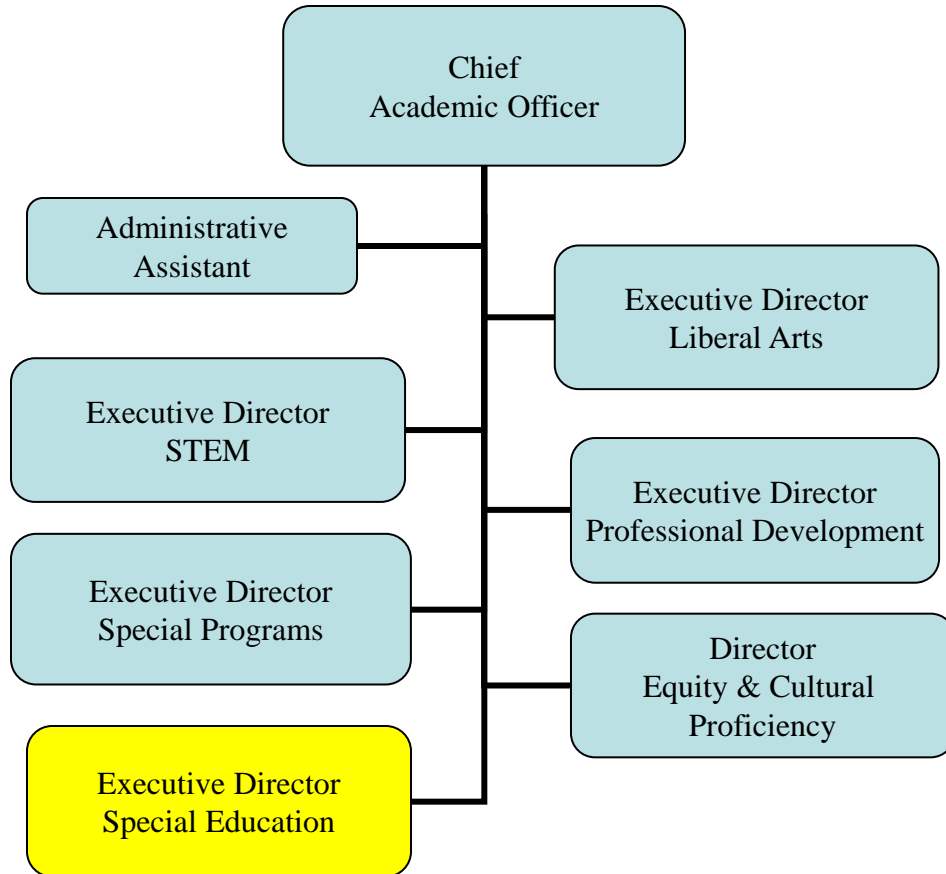
Assistant Superintendent Alternative Education & School Support



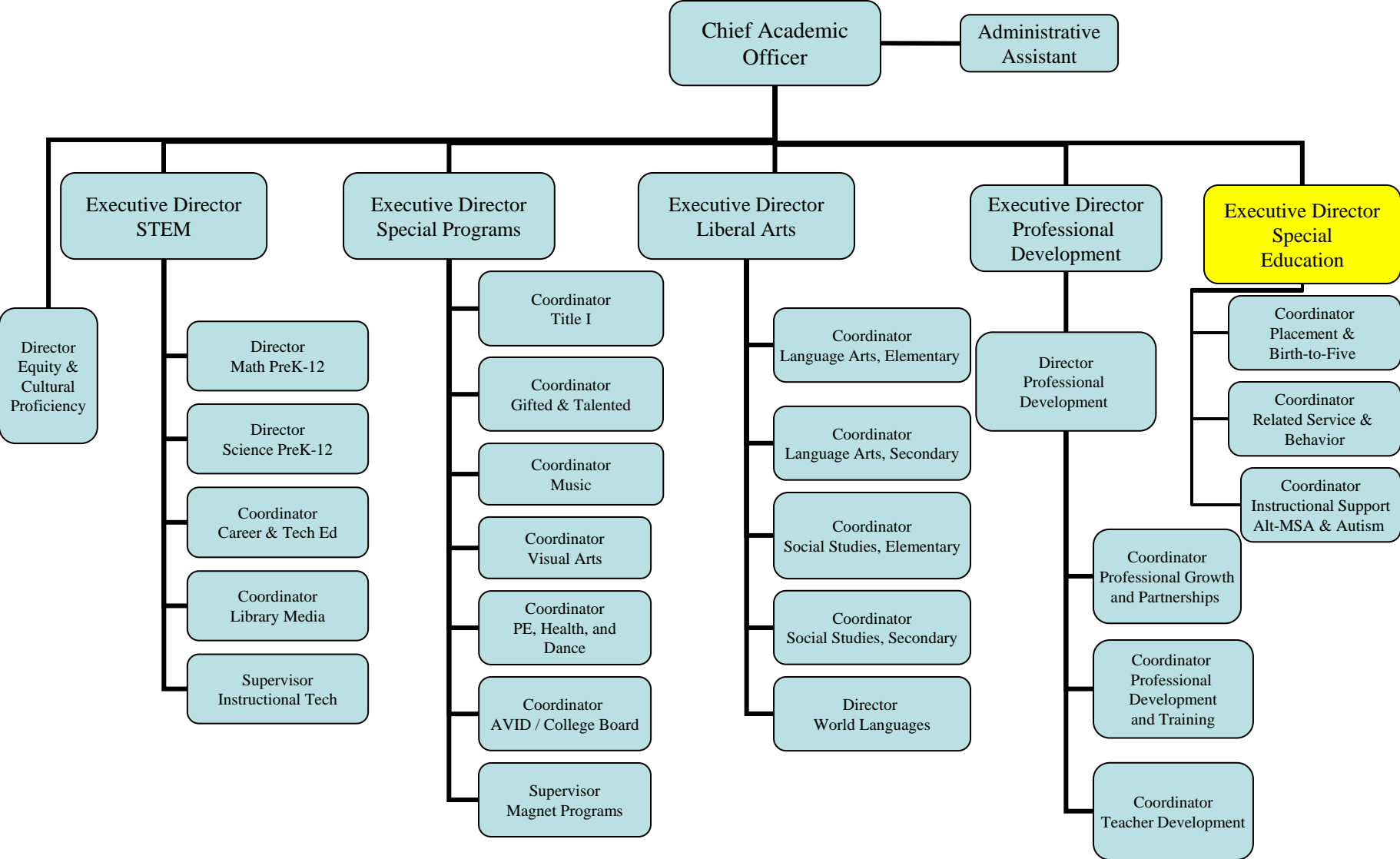
Department of Human Resources



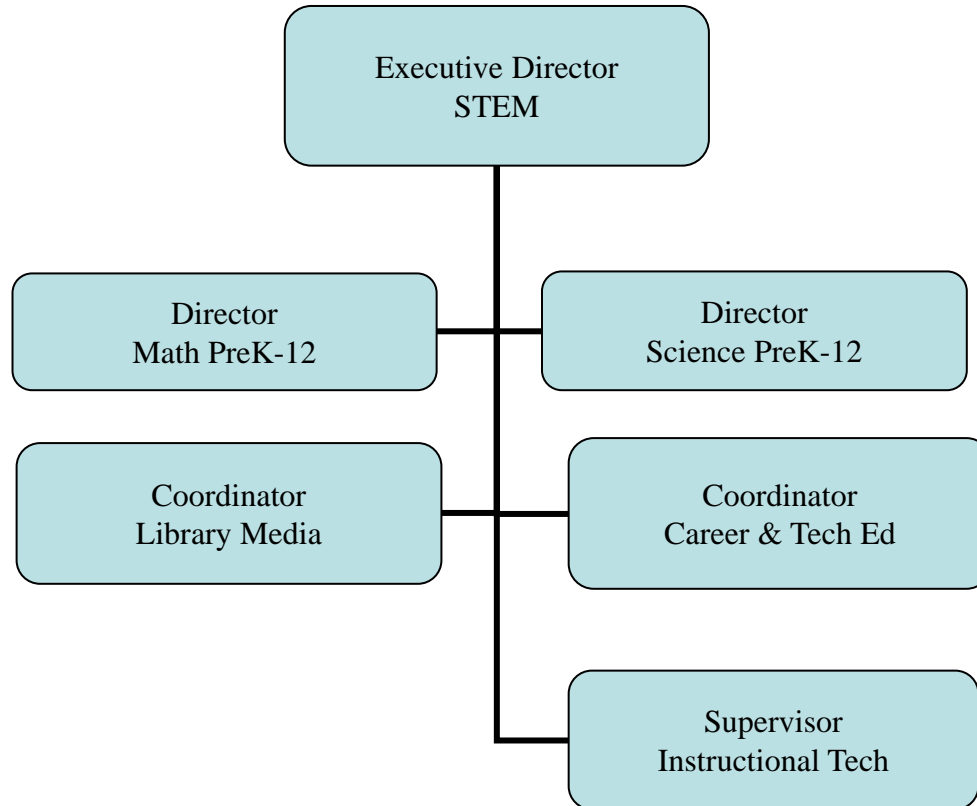
Chief Academic Officer



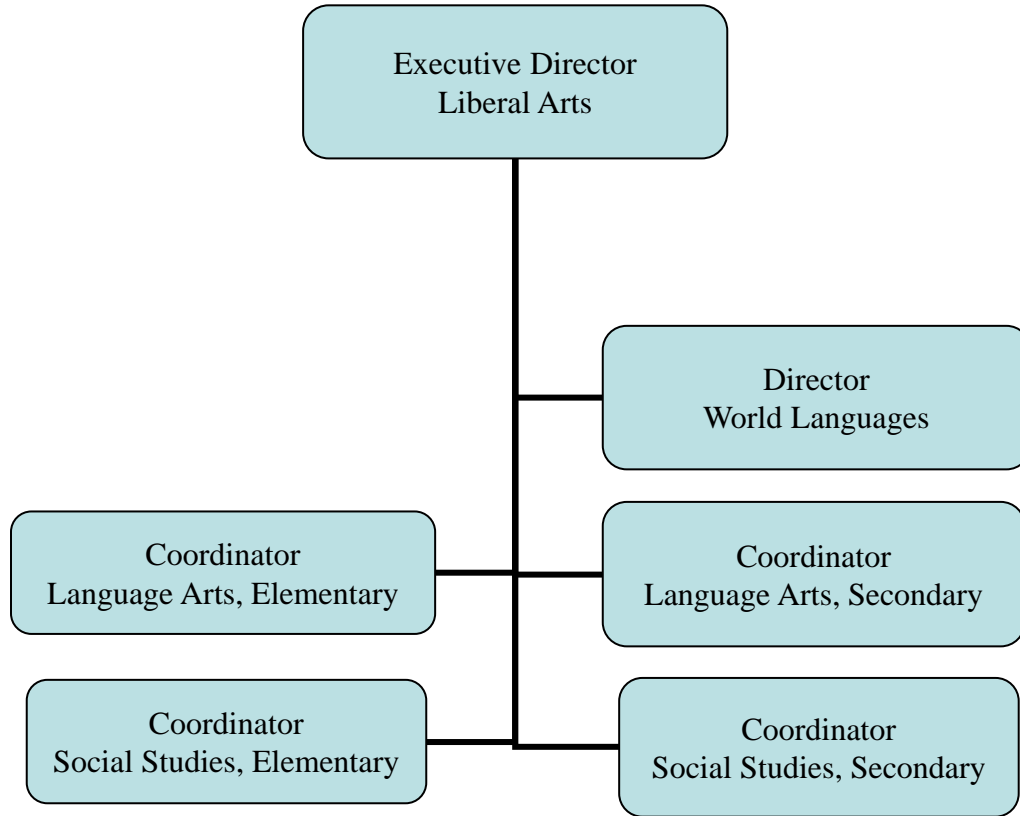
Division of Curriculum and Instruction Services



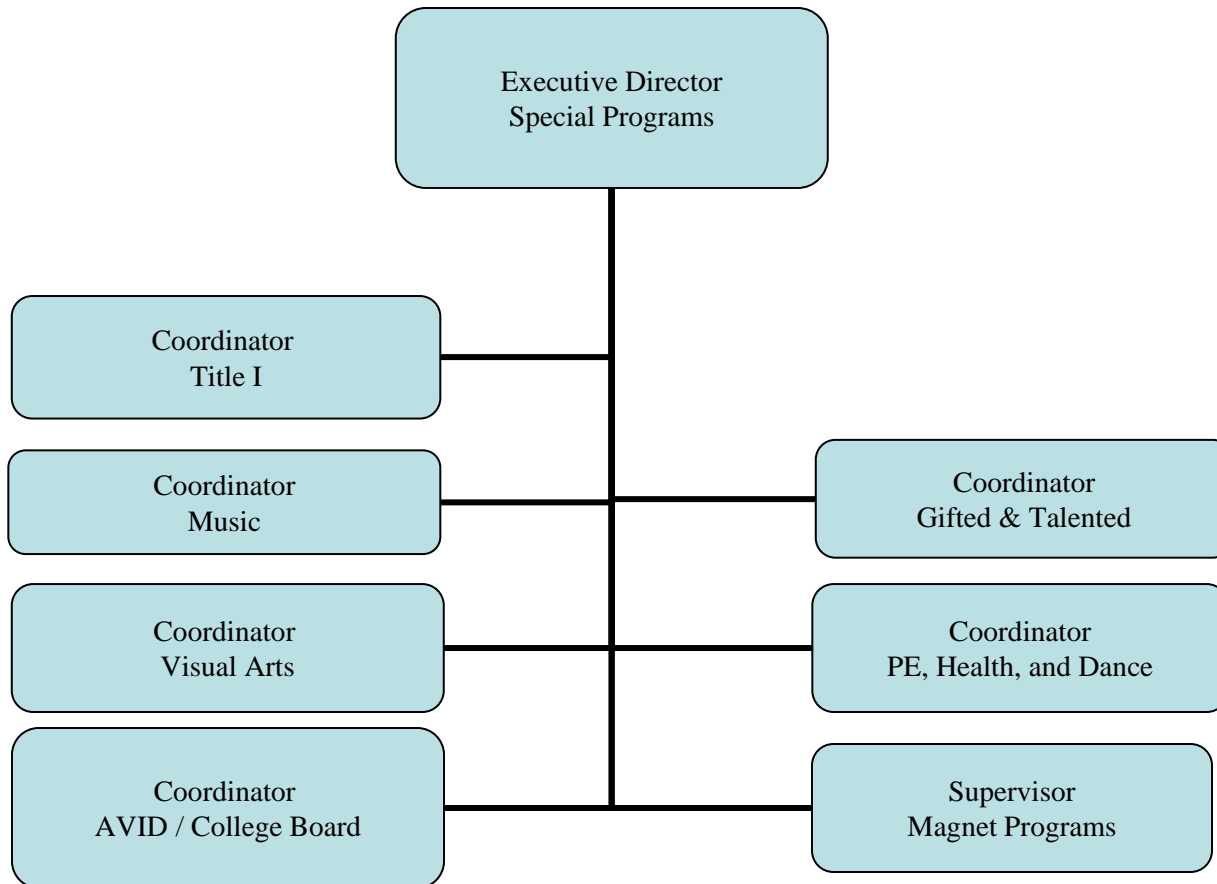
Executive Director - STEM



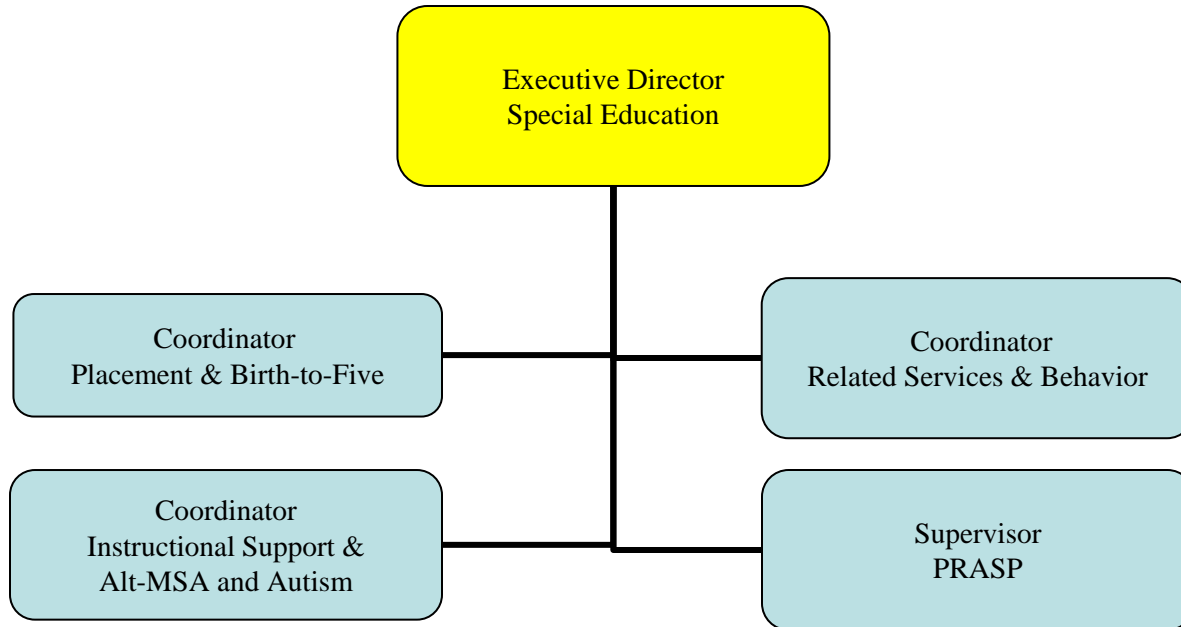
Executive Director – Liberal Arts



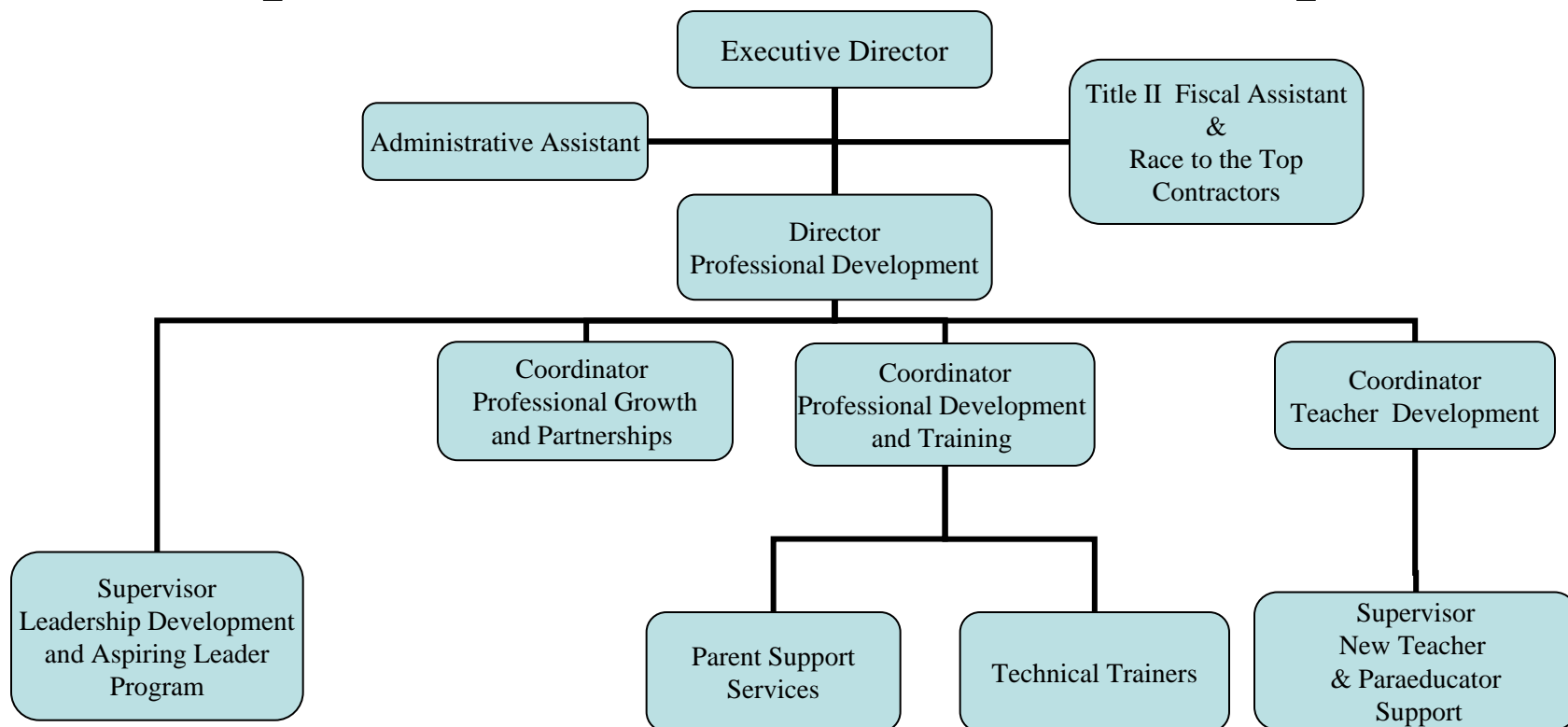
Executive Director - Special Programs



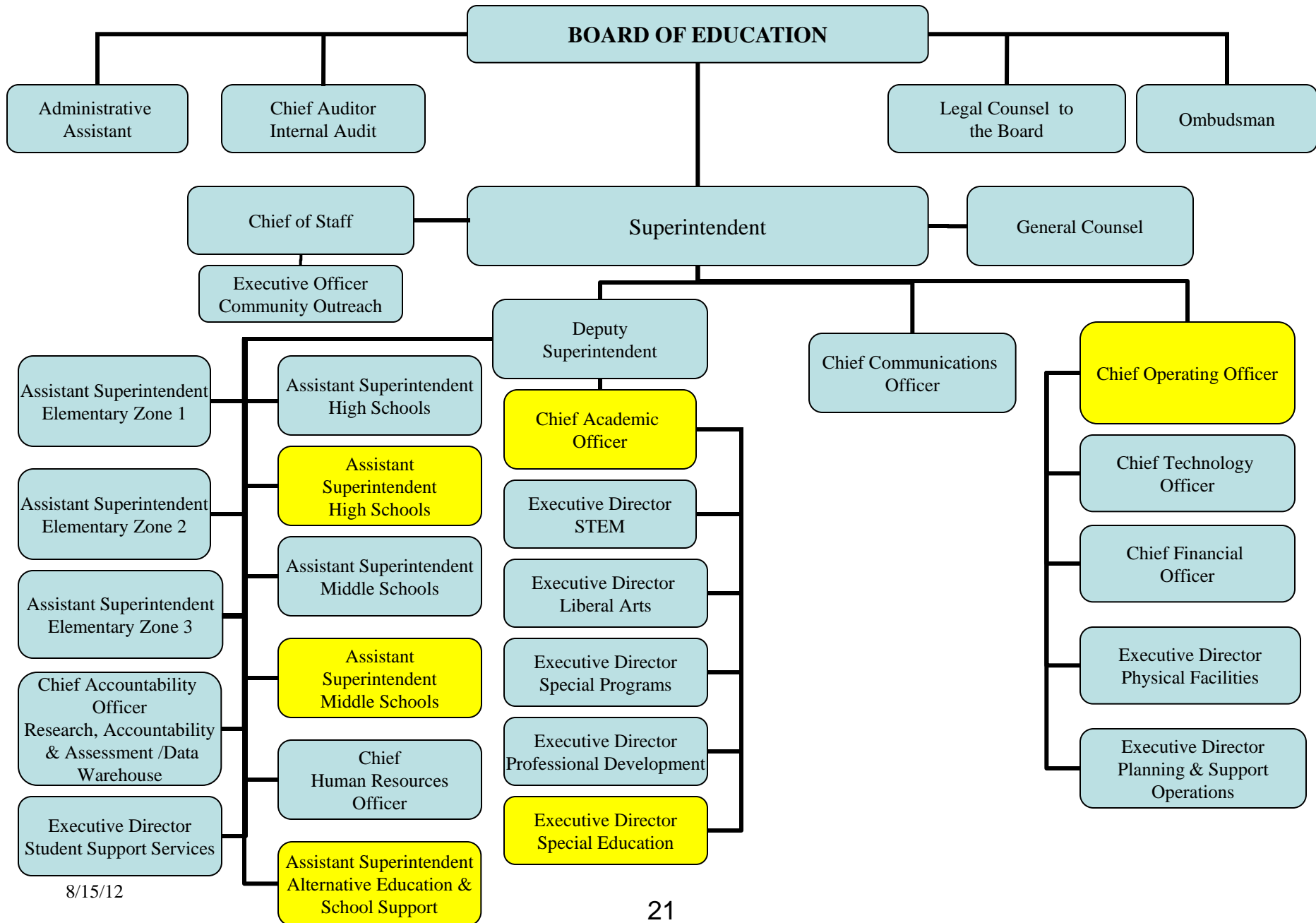
Executive Director - Special Education



Executive Director – Department of Professional Development



The Baltimore County Public Schools



The Baltimore County Public Schools Office of Internal Audit

